



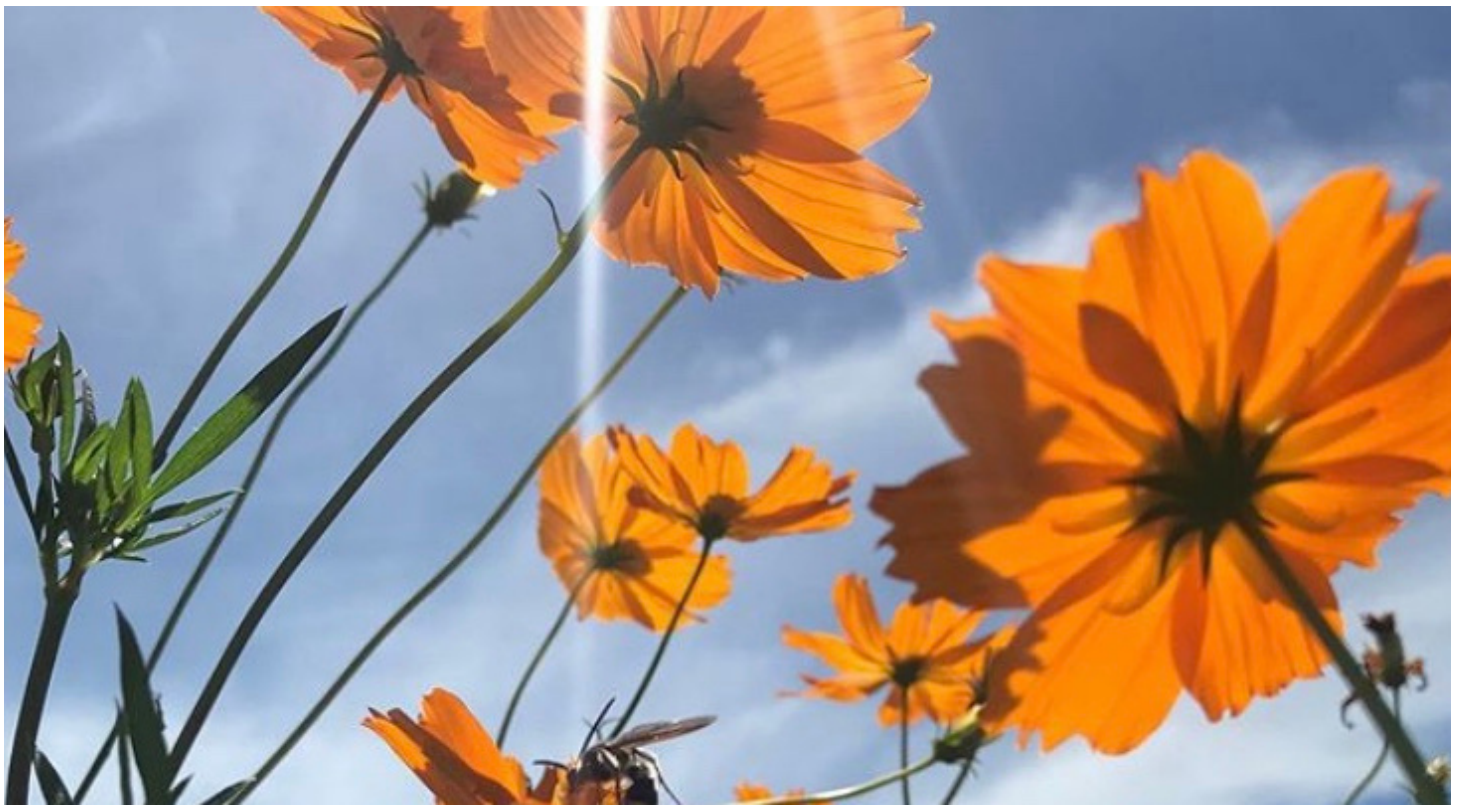
CREATING DREAM & COMMUNITY INPUT REPORT

Dunedin's Resilient Environmental Action Master Plan (DREAM)

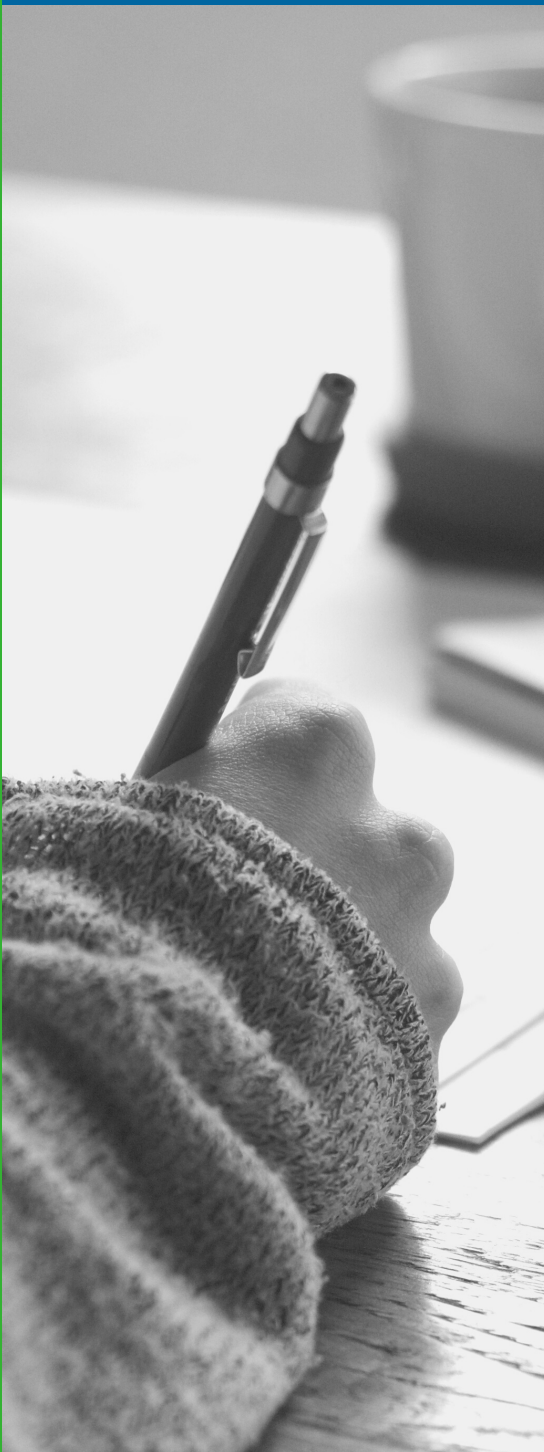


Table of Contents

| | |
|--|----|
| Vision | 2 |
| Methodology | 3 |
| City Advisory Committees Meeting | 5 |
| Virtual Community Forums | 6 |
| Online Survey | 13 |
| Schools | 18 |
| Public Comment | 19 |
| Supporting Materials | 20 |
| Thank You | 23 |



THE VISION BEHIND DREAM



The City of Dunedin has been dedicated to environmental protection for decades and continues to develop goals and plans for a more sustainable future. As the City has many environmental programs and aspirations, it was time for a formal master plan to be developed - one that intersected every department and highlighted the needs of the community.

Dunedin committed to developing its first environmental and sustainability plan in-house to highlight the expertise of the community, gain a deeper insight into the community's needs, and localize sustainable action. DREAM, Dunedin's Resilient Environmental Action Master Plan, is an all-encompassing plan with an extensive range of action items for sustainable solutions. More information can be found by visiting the City's webpage: www.DunedinGov.Com/dream

INITIAL STEPS

The City of Dunedin initially developed an internal task force to outline the crucial components of sustainability to be incorporated into the master plan. Once this was complete, the task force expanded to engage other community members including:

- Dunedin residents
- Dunedin business owners
- Local teachers and students
- Members of the Committee on Environmental Quality
- Non-profit organizations
- Dunedin visitors

WRITING TEAM TASK FORCE

The above-mentioned volunteers dedicated months to organizing, devising, and researching topics for DREAM. The teams initially met in person, but then had to convert to a virtual platform due to health concerns around the global pandemic.

This group formed the organizational framework of EPIC:

- Environment
- People and Process
- Infrastructure and Smart Development
- Consumption and Conservation

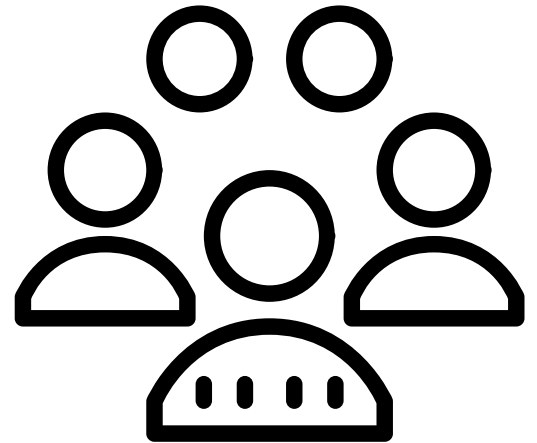
As categories and subcategories arose, the team further divided into separate writing groups where specific subjects were researched and actions items were developed. Each writing team member committed to writing on at least one topic and submitted a written form with information and recommendations. These forms were reviewed by City staff and incorporated into DREAM where feasible. The table on the next page outlines the writing teams and the topics that were reviewed.

| Category | Writing Team Name | Number of Team Members | Writing Topics |
|--------------------------------------|-----------------------------|------------------------|--|
| Environment | Land | 12 | Habitat protection, sustainable landscaping, greenspace, tree canopy, soil volumes, parks |
| Environment | Water | 8 | Hope Spot, habitat protection, water trails, water pollution, living shorelines, landscaping for water |
| People and Processes | Our Community | 12 | Green events, community gardens, engagement, foodscapes, sustainability map |
| People and Processes | Quality of Life | 6 | Air quality, complete streets, green job training, homelessness resources, amenities |
| People and Processes | Smart Development | 7 | Green building codes, electric vehicle ready infrastructure, green businesses |
| Infrastructure and Smart Development | Transportation | 5 | Bike paths, clean energy transit, land development code, safe routes to school |
| Infrastructure and Smart Development | Solid Waste | 5 | Waste reduction, recycling, composting, plastic reduction resource sharing, zero waste |
| Infrastructure and Smart Development | Water | 3 | Potable water, stormwater, wastewater, grey water, and reclaimed water systems |
| Infrastructure and Smart Development | Buildings | 6 | Green buildings, solar, weatherization, vehicle to grid infrastructure |
| Consumption and Conservation | Clean Energy and Efficiency | 6 | Ready For 100 clean energy goals, end fossil fuel use, solar, energy efficiency |
| Consumption and Conservation | Consumer Consumption | 5 | Reduction of consumption, conserving resources, community competitions |
| Consumption and Conservation | Smart Purchases | 3 | Sustainable purchasing, green products, and sustainable business practices |

CITY ADVISORY COMMITTEES MEETING

The City of Dunedin has numerous advisory committees and boards whose function is to advise and report to the City Commission on matters pertaining to their committee. All advisory committees and boards were invited and encouraged to attend the All Advisory Committee virtual meeting regarding DREAM. Those who participated and were represented included:

- **Architectural Review Committee**
- **Arts and Culture Advisory Committee**
- **Art Consultant of Dunedin**
- **Causeway and Coastal Waterways Committee**
- **Committee on Environmental Quality**
- **Community Redevelopment Agency Advisory**
- **Edgewater Drive Advisory Committee**
- **Library Advisory Committee**
- **Local Planning Agency**
- **Marina Advisory Committee**
- **Parks and Recreation Advisory Committee**
- **Stormwater Advisory Committee**
- **Youth Advisory Committee**



A great discussion was held amongst committee members, offering solutions and innovative approaches for the master plan. The top three highlights from the meeting were a need for:

- **Assessment**
 - The group discussed the importance of assessing where Dunedin currently stands as a means to understand the needs of the community and be able to measure progress.
- **Education**
 - Educating the community on sustainability, its importance, and how people can make an impact will be best accomplished through a multifaceted approach.
- **Regional Approach**
 - Neighboring communities and cities should share lessons learned, best practices, and partner where feasible for more impactful regional action.

VIRTUAL COMMUNITY FORUMS

Facilitation Team - City of Dunedin and UF/IFAS Pinellas County Extension Office

- Natalie Gass, Sustainability Program Coordinator, City of Dunedin
- Ramona Madhosingh-Hector, Urban Sustainability Agent, UF/IFAS Extension Pinellas County
- Lara Milligan, Natural Resources Agent, UF/IFAS Extension Pinellas County

Purpose

To receive community input for this master plan, the City of Dunedin staff partnered with UF/IFAS Extension faculty to organize and host community forums. The purpose of holding listening sessions and forums was to provide space for community members to share their ideas, suggestions, and concerns regarding DREAM. City staff used that information to prioritize the community's needs and further develop a list of ideas to explore. A total of nine community forums were scheduled. The forums were offered at varying times of day and during the week to allow residents and community members to more easily attend. Since the forums took place during the global coronavirus pandemic, all forums were held virtually using Zoom. It is to be noted that because these meetings could only be held virtually, members of the community who had access to computers, Wi-Fi, and the internet were given preference to share their voice because they had the ability to attend. The initial plan to host in-person meetings was canceled due to health concerns around the global pandemic.

Target Audience and Advertisements

The target audience for the forums was all community members, including but not limited to, residents, business owners, students, parents, teachers, and visitors. The City of Dunedin and UF/IFAS Extension Office advertised the forums to city residents, visitors, schools, places of worship, community organizations, and the business community. Advertising efforts were channeled through various means of communication to spread the word about the forums. These included the Beacon Newspaper, printed media distributed in local businesses and City facilities, the City's E-notify lists, phone calls, email distribution, Eventbrite, Facebook, the City of Dunedin's website. UF/IFAS shared the information through their mailing lists, social media pages, and website.

Organization of Virtual Community Forums

Community forums were divided into three main categories:

- Parents & Teachers
- Students
- All Community Members

The layout of the forum:

- Welcome and Introductions
- Quick Overview of the DREAM Project
- Guiding Questions and Discussion
- Wrap Up and Next Steps



Guiding questions were tailored to the specific group and mainly focused on improving sustainability planning and projects. The questions used included:

Introductions:

1. **What do you value about living in, visiting, and working in the City of Dunedin?**

Guiding questions:

1. **What are *your* top sustainability priorities for the City of Dunedin?**
2. **Based on what you heard in Question 2, what sustainability actions should the *City* prioritize to meet its goals?**
3. **How can the community and the City collaborate to support work on these critical issues in the future?**

The next few pages outline the questions and answers discussed from all of the community forums.

What do you value about Dunedin?

Sense of Community

Beaches and Greenspace

Environmentally Focused

Small Town Feel

Culture & Events

Walkability

Community Garden

Willingness to Listen

Friendliness



Community Forums

**What are
your top
sustainability
priorities for the
City?**

Ecosystem Preservation

Sustainable Landscaping

**Balance of Development
& Green Space**

Reduce Waste

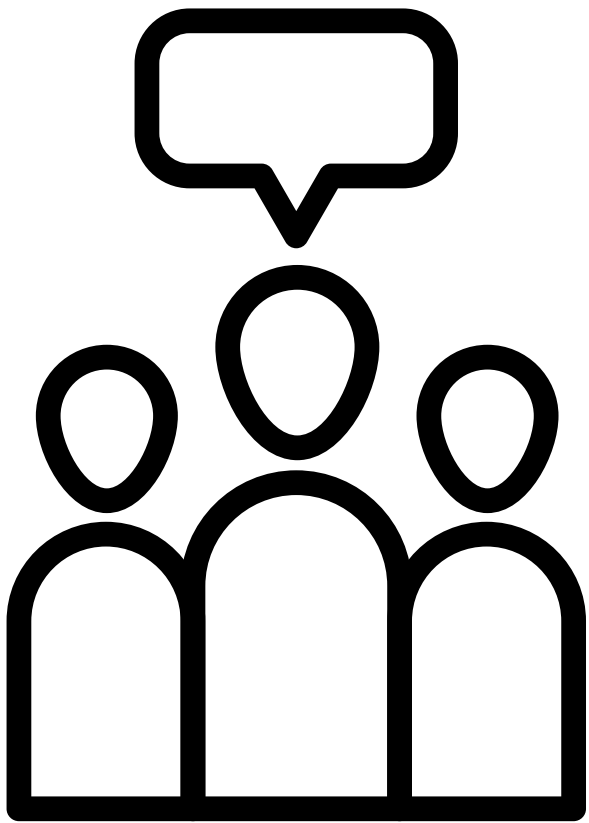
Green Transportation

Accessibility

Traffic Control

Sea Level Rise

Resource Conservation



What sustainability actions should the City prioritize?

Science-based Solutions

Sustainable Landscaping

Controlled Development

Community Education

Green Transportation

Accessibility

Traffic Control

Flooding Impact Mitigation

Resource Conservation



Community Forums

How can the City and the community collaborate on sustainable actions?

Local Environmental Taskforce

Sustainability Symposium

Engage Youth

Call to Action for Citizens

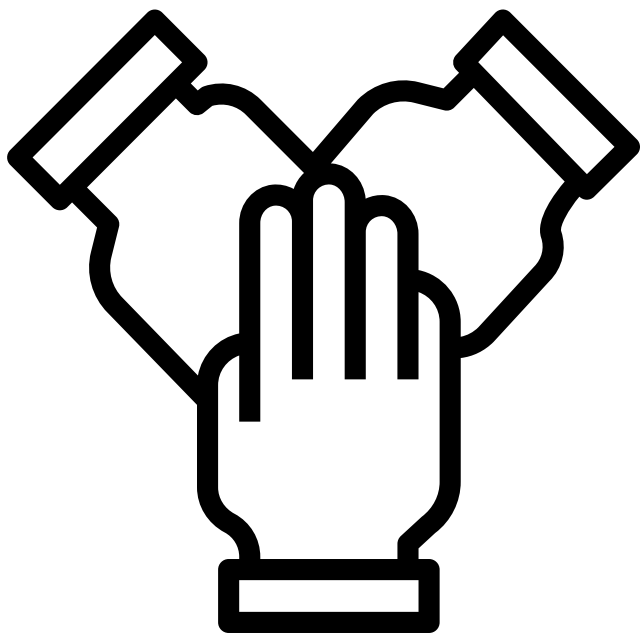
Experimental Learning

Business Involvement

Community Activism

Use of Media

Information Sharing



Community Forums

Virtual Community Forums Summary

In reviewing the community's responses, common themes arose. Two common themes were the preservation of green space and limiting development. Others included traffic control, ADA accessibility, plastic reduction, a push for schools to be more involved in sustainability, and better landscaping practices. It is interesting to note that clean energy was not a topic of discussion in any of the forums. However, it was the main focus in 2018 when the community urged the city to commit to Sierra Club's Ready For 100 goals.

As these forums took place between January and April of 2021, it is important to understand the current events during that time. The community was amid a global pandemic, high unemployment, and local efforts were geared towards fighting to save the Gladys Douglas Preserve. The current events during that time influenced the voice of the community and the responses provided within the forums.

Despite the various forms of advertising and marketing used, the number of people who attended the forums was consistently lower than the number of registrants. Due to this fact, city staff and UF/IFAS Extension staff felt it would be beneficial to develop an online survey that more community members could utilize.

**DREAM BIG.
DREAM DUNEDIN.**
DUNEDIN'S RESILIENT ENVIRONMENTAL ACTION MASTER PLAN (DREAM)

How do **you** want to see the City continue its sustainability goals and initiatives? Share your thoughts by attending a community forum.

YOUR VOICE, OUR DREAM

Virtual Community Forums

All Community Members

- Thursday, January 28th at 4:00 PM
- Saturday, February 20th at 10:00 AM
- Saturday, March 27th at 10:00 AM

Parents & Teachers

- Thursday, January 21st at 7:00 PM
- Thursday, February 25th at 7:00 PM
- Thursday, March 25th at 7:00 PM

Students (Middle & High School)

- Wednesday, February 3rd at 3:30 PM
- Wednesday, March 3rd at 6:30 PM

WE WANT TO HEAR FROM YOU

REGISTER HERE
DunedinGov.Com/DREAM

Questions? 727-298-3215 x1324

WWW.DUNEDINGOV.COM/GREENSCENE



DREAM Community Forum

Zoom

- Please mute your mic unless speaking
- Improve bandwidth by closing excess windows & apps

Dunedin Community Forum

- Please respect everyone's opinions, questions, concerns, and ideas
- This will be a 1 hour forum. Approximately 10-15 minutes will be allocated for each discussion question.
- Use the chat to log your answers and ask the hosts questions.

Dunedin's Resilient Environmental Action Master Plan (DREAM)

- A living document to guide the City of Dunedin as it strives to be a healthy and sustainable place to live, learn, work, and play.
- A "binder" for the various sustainability projects, programs, and goals.
- To be used by staff and the community.
- A community writing project.
- Communities' hopes, ideas, and dreams to be included in the plan.

Sustainability
"Meeting the needs of the present without compromising the ability of future generations to meet their own needs."
-United Nations, 1987

ONLINE SURVEY

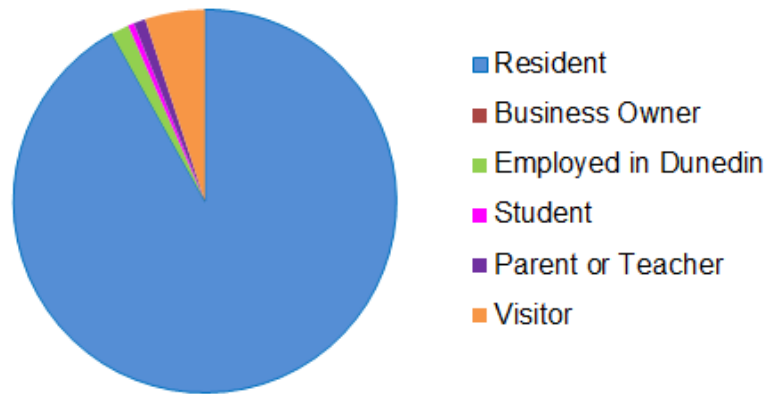


DREAM Online Survey

An online survey was developed to reach more community members, especially those who could not attend the virtual forums. The survey provided an option for residents, students, and visitors to provide feedback during a time that worked best for them. The survey was split into various sections to pinpoint further questions based on the individual's interaction with the city and community. Categories for survey responders included:

- Resident of Dunedin
- Business Owner in Dunedin
- Employed in Dunedin
- Student in Dunedin
- Parent or Teacher in Dunedin
- Dunedin Visitor

DREAM Survey Responders



DREAM Survey - By the Numbers

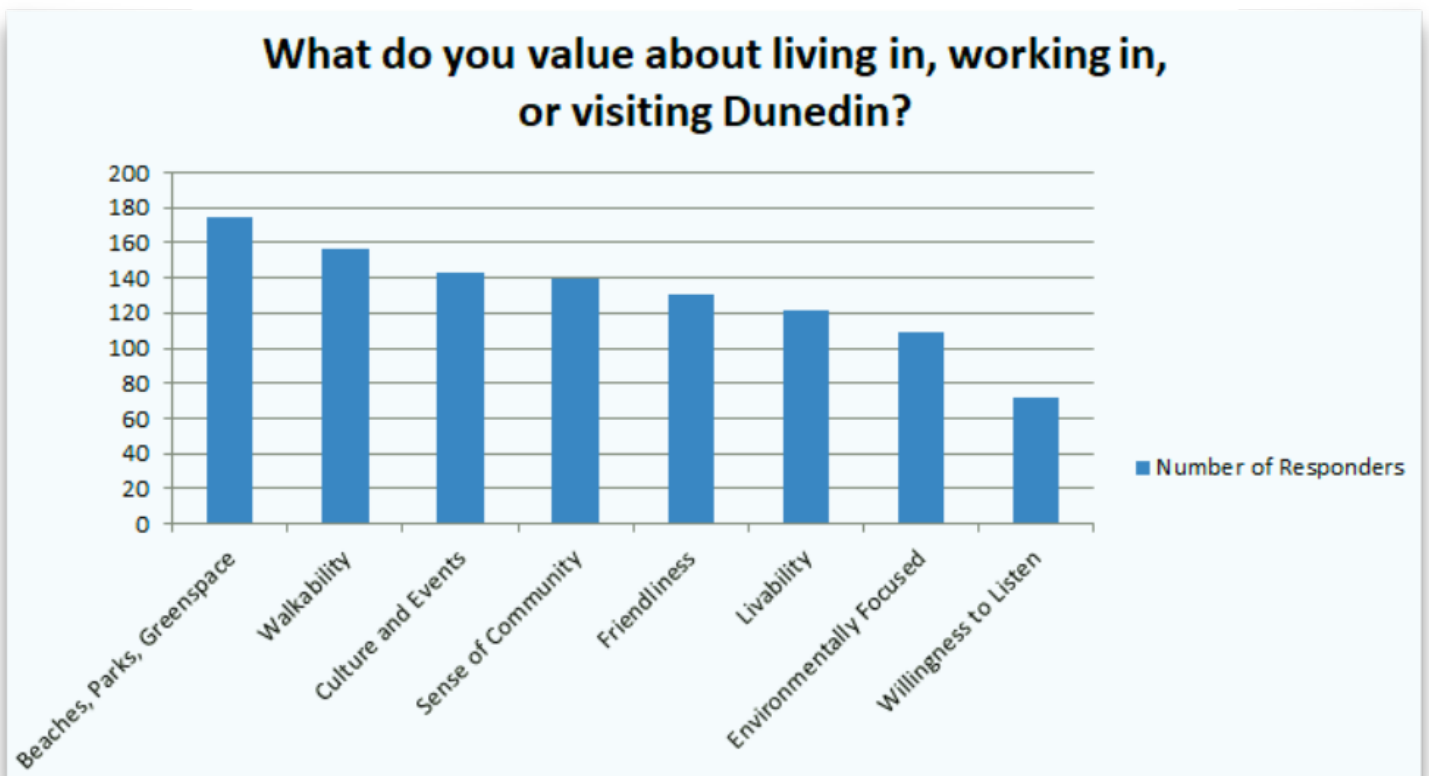
While attendance for the virtual community forums was low, there was positive feedback with the number of survey responders. In total, 198 people completed the online DREAM Survey. The majority of the responders were residents of Dunedin, with the second-highest group being visitors, those employed in Dunedin, and finally parents, teachers, and students in Dunedin. There were no responders in the category of Business Owner in Dunedin. When looking at the types of survey responders, it is important to note that they selected the most closely relatable category. A responder may have been in multiple categories (such as a teacher and a resident), but they were only given one option.

| Types of Survey Responders | Number of People in each Category |
|------------------------------|-----------------------------------|
| Resident of Dunedin | 182 |
| Business Owner in Dunedin | 0 |
| Employed in Dunedin | 3 |
| Student in Dunedin | 1 |
| Parent or Teacher in Dunedin | 2 |
| Dunedin Visitor | 10 |

DREAM Online Survey Results

What do you value about living in, working in, or visiting Dunedin?

Similar to the virtual community forums, the initial question on the survey was, “What do you value about living in, working in, or visiting Dunedin?” This question framed what people value about the community, what they prioritize, and how they engage in the community. The majority of survey responders valued the beaches, parks, and green spaces the most. Their responses validate the impact natural spaces have on residents and visitors of Dunedin. Other popular values included walkability, culture and events, sense of community, friendliness, livability, being environmentally focused, and the city's willingness to listen.



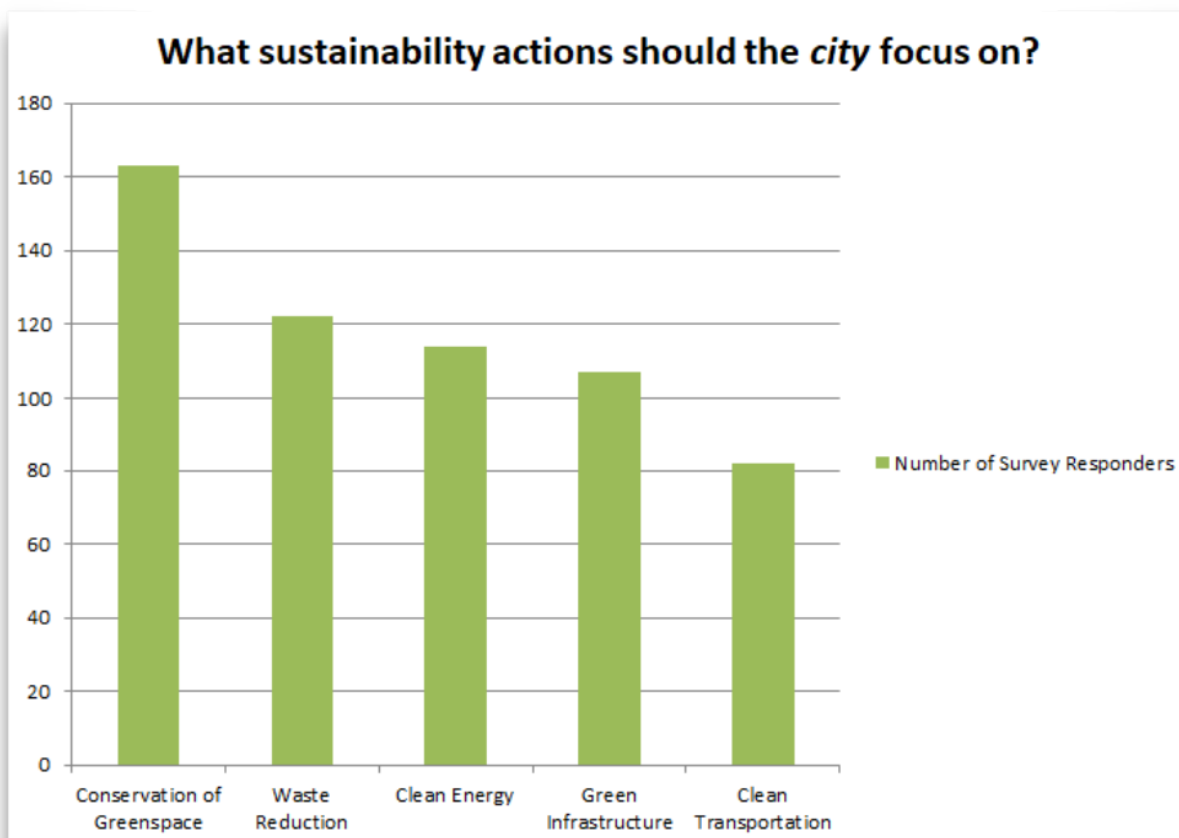
Written answers submitted for the "Other" option included:

- Amenities
- Downtown
- Inclusivity and diversity
- Progressive community
- Tourism and vacation area
- Medical care
- Dog friendly
- Individuals have a voice
- Small town feel
- Golf cart access
- Limited development
- Safety
- Local businesses

DREAM Online Survey Results

What sustainability actions should the City focus on?

The second question was about sustainability and the ideas community members felt the City should emphasize. Not surprisingly, the most popular action was the conservation of green space. This answer directly mirrors the highest value from the previous question. Other top priorities that were voted on include waste reduction, clean energy, green infrastructure, and clean transportation. From these statements, it is important to prioritize the actions and projects the City embarks on due to limited resources, time, and funding. Obtaining a sense of what community members view as important and being able to rank these items, gives the City government the direction to effectively plan and proceed with particular action items.



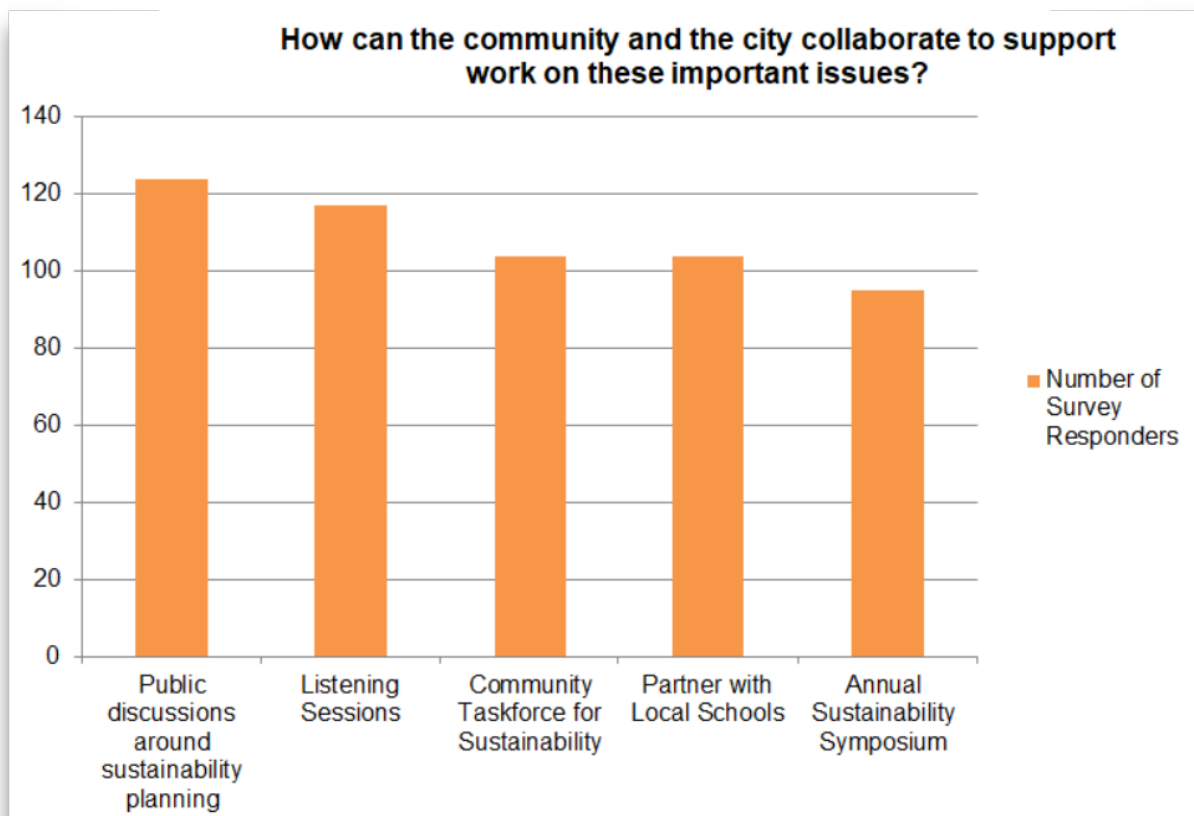
Written answers submitted for the "Other" option included:

- Bike trail safety
- Climate change preparation
- Abating development
- Air quality
- Noise pollution
- Bicycle parking
- Cleanups
- Sustainable Landscaping
- Worker Co-ops
- Repurposing items and plastic reduction
- Nature education
- Curbside compost pick up
- Affordable housing

DREAM Online Survey Results

How can the community and the City collaborate to support work on these important issues?

The final multiple-choice question addressed community collaboration. This question was asked to receive input on how community members best interact with local government. Based on the survey data, the option that had the highest feedback was public discussion around sustainability planning. This emphasized the fact that the community wants to continue to stay involved throughout the planning and implementation process for these sustainable actions. Since this is the direction the community would like to go, the next step will be finding the means to receive higher participation at forums and planning events. The low participation rates of the virtual community forums could be combated in the future by providing varying time slots, in-person options, meeting options with childcare, meeting options that are centrally located, or shorter meeting times to allow for those with heavy schedules. The second most popular option was the idea of Listening Sessions. This is where City staff or elected officials will sit in the room and listen to the voices of the community members. These listening sessions could solely be around sustainability or incorporate other pressing issues.



DREAM Online Survey Results

The third most popular option for collaboration was to develop a Community Taskforce for Sustainability. This could be a voluntary group of residents and community members who are passionate and knowledgeable about sustainable actions. A community task force could help spread the word about sustainable practices and projects, furthering the “grassroots” aspect of environmental action. The fourth most popular idea was to Partner with Local Schools. Since students are the next generation and will be inheriting what is left behind to them, it is critical to have students engaged in the conversation. Although the Dunedin High School Earth Club was not meeting during the months of community input, the City could partner with the Dunedin High School to further engage the youth. Students could learn, engage, and speak on environmental topics and be a voice for their generation. The final idea for community collaboration from the survey was the idea to hold an Annual Sustainability Symposium. During this symposium, community members, organizations, and businesses could present their actions and showcase the ways sustainability is being addressed. Awards and project highlights could encourage participation. As all of these ways of collaboration are impactful, the City can adopt one, all, or a mix of these to further support its goals.

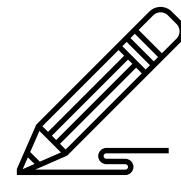
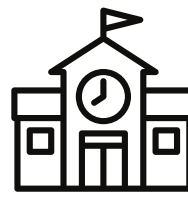
Summary of Online Survey and Virtual Community Forums

The results of the online survey mirrored the responses from the virtual community forums, strengthening the understanding that the community is connected in its core values.

Conservation of green space was the highest priority action from both community input platforms. During that time, the survey was well-received and obtained greater participation than that of the community forums. Since the survey was developed in response to low participation from the forums, the questions outlined in the survey were similar to those asked during the virtual events. The assumption that responders would answer similarly was correct. Although conducting the survey had its benefits and was easier for the community to engage with, there were a few drawbacks. These included not having the ability for group discussions and responders being promoted by multiple choice answers instead of answering the questions open-ended. Overall, both platforms allowed City staff to obtain important information about the values and priorities of the community.



SCHOOLS



Middle School Science Class Assignment

While it was difficult to engage with local students during the community forums and the online survey, one teacher at Our Lady of Lourdes Catholic School made it an assignment for her middle school science class.

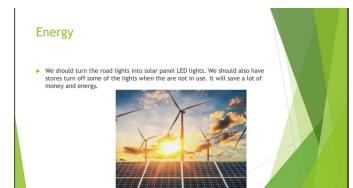
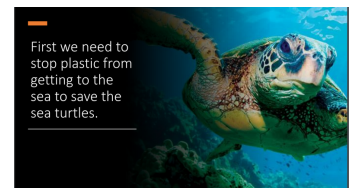
Giving students this project as an assignment allowed them the time and resources to creatively engage with the topic. City staff is grateful for the time, dedication, and thought put into this project by Ms. Falcioni and her 2020 middle school science class students.

Overview of Recommendations

The students created PowerPoint presentations, which can be viewed in full here: [Our Lady of Lourdes School Projects](#)

An overview of the recommendations include:

- Install water refill stations on the Pinellas Trail
- Use golf carts for transportation instead of traditional vehicles
- Install golf cart charging stations that are solar-powered
- Have a cleanup crew for Honeymoon Island once a week
- Make paper straws mandatory
- Volunteer trash pickup programs for parks
- Turn road lights into solar panel LED lights
- Encourage businesses to turn off lights when not in use
- Increase garbage and recycling receptacles around Dunedin
- Increase electric vehicle parking and charging stations
- Install reusable water bottle vending machines
- Install solar on City buildings
- Create solar and wind farms on Caladesi and Honeymoon Islands
- Have more rain barrels and protect water resources
- Schedule invasive plant removal events with students
- Reduce plastic use
- Use virtual books to save paper and trees
- Ditch plastic bags
- Use energy-efficient appliances
- Encourage biking and green transportation
- Support green infrastructure
- Advocate for a healthy community



PUBLIC COMMENT

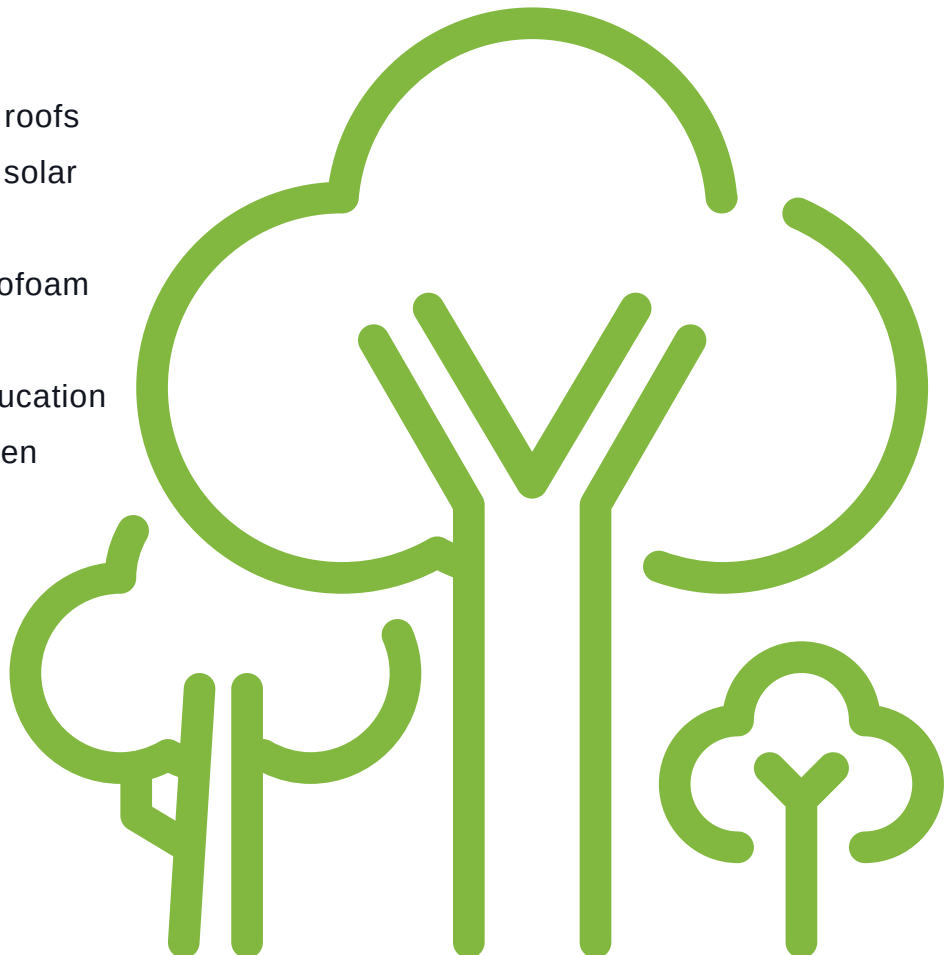


Purpose

Hearing the community's voice was the mission of conducting various outlets for community members to share their voices and provide input. For those who were unable to participate in the community forums, surveys, or writing teams, public comment was an option for further engagement. Public comment was received through the City's webpage, through email, and through social media outlets.

Overview of Recommendations from Public Comment

- Prioritize green space over concrete and built environment
- Prioritize smart development practices
- Prioritize vertical growth and population density to save green space
- Convert Main Street downtown and other areas to pedestrian-only corridors
- Incorporate fruit trees and edible native plants in landscaping
- Eliminate herbicide use
- Promote urban gardening, permaculture, and local farmers markets
- Increase garbage receptacles on the Causeway
- Save the Gladys Douglas Preserve
- Increase affordable housing
- Create a composting program
- Promote light-colored, reflective roofs
- Prioritize building efficiency and solar
- Increase Dunedin's urban forest
- Reduce or ban plastics and Styrofoam
- Work to increase water quality
- Expand environmental public education
- Encourage businesses to be green
- Increase permeable surfaces
- Increase public transit



SUPPORTING MATERIALS



DREAM BIG. DREAM DUNEDIN.

DUNEDIN'S RESILIENT ENVIRONMENTAL ACTION MASTER PLAN (DREAM)

How do you want to see the City continue its sustainability goals? Share your thoughts!

**Take the Survey at www.DunedinGov.Com/dream
Questions? 727-298-3215 x1324**

**WE WANT
TO HEAR
FROM
YOU**



SUPPORTING MATERIALS

Attendees of the 2021 Virtual Community Forums

| Type of DREAM Forum | Date | Day | Time | # of Registrants | # of Attendees |
|---------------------------------|---|-----------|---------------------|------------------|-----------------------------|
| Parents & Teachers | January 21 st , 2021 | Thursday | 7:00 PM – 8:00 PM | 7 | 0 |
| All Community Members | January 28 th , 2021 | Thursday | 4:00 PM – 5:00 PM | 21 | 10 |
| Students (Middle & High School) | February 3 rd , 2021 | Wednesday | 3:30 PM – 4:30 PM | 3 | 4 |
| All Community Members | February 20 th , 2021 | Saturday | 10:00 AM – 11:00 AM | 10 | 3 |
| Parents & Teachers | February 25 th , 2021 | Thursday | 7:00 PM – 8:00 PM | 3 | 1 |
| Students (Middle & High School) | Wednesday, March 3 rd , 2021 | Wednesday | 6:30 PM – 7:30 PM | 1 | 3 |
| Parents & Teachers | March 25 th , 2021 | Thursday | 7:00 PM – 8:00 PM | 2 | 0 (meeting was canceled) |
| All Community Members | March 27 th , 2021 | Saturday | 10:00 AM – 11:00 AM | 12 | 2 |
| All Community Members | April 15 th , 2021 | Thursday | 4:00 PM – 5:00 PM | 5 | 3 |

SUPPORTING MATERIALS

Community Forum Process

| Time | Meeting Item | Person Responsible |
|---------------------|---|--|
| 6:55 p.m. | <p>Zoom Room Management</p> <p>Allow participants to join from waiting room, write a welcome message in chat box, and ask participants “where did you hear about tonight’s meeting?”</p> | <p>Natalie</p> <p><i>For those just joining us –</i></p> <p>Welcome to the Parents & Teachers community forum for DREAM – Dunedin’s Resilient Environmental Action Master Plan! We look forward to hearing your ideas, thoughts, and dreams. Please note this meeting is being recorded for note-taking purposes only. Where did you hear about tonight’s meeting?</p> |
| 7:00 p.m. (5 mins) | <p>Welcome and Meeting Overview (setting the stage)</p> <p>Refer to UF/IFAS Extension involvement to conduct community forums, and then we can introduce ourselves when Lara starts with questions.</p> | <p>Natalie</p> <p>Start at SLIDE 1</p> |
| 7:05 p.m. (10 mins) | <p>Participant Introductions</p> <p>Ensure that participants know what to include in response by putting directions in chat</p> <p>Introductions (1 minute)</p> <p><i>i. Your Name</i></p> <p><i>ii. What do you value about living in, visiting and/or working in the City of Dunedin?</i></p> <p>Would anyone like to start, we’ll be sure to hear from everyone this evening.</p> | <p>Lara - moderator</p> <p><i>Remember to ask people on the phone to chime in</i></p> <p><i>Video preferred, use chat, active participation</i></p> <p>Ramona – chat box/timekeeper</p> |

SUPPORTING MATERIALS

| | | |
|-------------------------------|---|---|
| <p>7:15 p.m. (10-15 mins)</p> | <p>Question 2 Put question in chat box In order to create a sustainable Dunedin, we want to hear from you: <i>What are your top sustainability priorities for the City of Dunedin?</i> Please use the letter Q in the chat box so that we have an order for calling on you, and it helps to manage us talking over folks, thanks so much!</p> | <p>Ramona – moderator Lara – chat box/timekeeper</p> |
| <p>7:25 p.m. (10-15 mins)</p> | <p>Question 3 Put question in chat box <i>Based on what you heard tonight in Question 2, what sustainability actions should the city prioritize to meet its goals?</i></p> | <p>Lara - moderator Ramona – chat box/timekeeper</p> |
| <p>7:35 p.m. (10 mins)</p> | <p>Question 4 Put question in chat box <i>How can the community and city collaborate to support work on these important issues going forward?</i></p> | <p>Ramona – moderator Lara – chat box/timekeeper</p> |
| <p>7:45 p.m. (10 mins)</p> | <p>Wrap-Up and Next Steps As we wrap up this evening, please let us know what’s missing or provide any final comments in the chat box. Make sure to mention: (What city is doing or will do?) (Answer any questions from participants) Future forums and ways to provide input for the DREAM plan</p> | <p>Natalie Put dates and registration links in the chat box for next forums The City is working on a variety of sustainability projects right now including running on 100% renewable energy by 2035, protecting aquatic wildlife through the Florida Gulf Coast Hope Spot, expanding electric</p> |

SUPPORTING MATERIALS

| | | |
|-----------|---|---|
| | | <p>vehicle charging station infrastructure, preserving land and green space, and more.</p> <p>These projects will also be discussed in DREAM, which is anticipated to be completed by the end of this Summer (2021).</p> <p>Please share the community forums with your friends, family, and colleges! We have two more Parents & Teachers forums on February 25th and March 25th. Registration links are below.</p> <p>For more information about DREAM including upcoming forums and ways to provide input, please visit DunedinGov.Com/dream</p> |
| 8:05 p.m. | <p>Adjourn</p> <p>I want to thank you for this great discussion. I am so appreciative of you sharing your time, ideas, and attending this forum. Have a wonderful evening!</p> | <p>Natalie</p> <p>Thank you all for attending this evening! I greatly appreciated the discussion and look forward to completing the DREAM plan.</p> <p>Contact information: Natalie Gass, Sustainability Program Coordinator for the City of Dunedin: ngass@dunedinfl.net</p> <p>727-298-3215 x1324</p> |

THANK YOU

Thank you!

A huge thank you to those who contributed to developing Dunedin's first sustainability plan. The City of Dunedin is appreciative of your time, efforts, collaboration, and expertise. Thank you for your support in this endeavor.

Special thanks to:

DREAM Writing Team Members

UF/IFAS Extension Office

Committee on Environmental Quality

City of Dunedin Staff

Blue-Green Connections

Ms. Falcioni's Middle School Science Class (2020)

Our Lady of Lourdes Catholic School

DUN  DIN
Home of Honeymoon Island