

DUNEDIN

Home of Honeymoon Island



*Pay Plan
for
Fiscal Year 2024*

“Dedicated to Quality Service”

2023/2024 PAY PLAN

Julie Ward Bujalski, Mayor
John Tornga, Vice-Mayor
Maureen Freaney, Commissioner
Jeffrey Gow, Commissioner
Robert Walker, Commissioner

Jennifer Bramley, City Manager

DUNEDIN

Home of Honeymoon Island

Effective October 1, 2023

***“A community partnership dedicated to Quality Service
that effectively, efficiently and equitably enhances
the Quality of Life in Dunedin.”***

Prepared by the Department of Human Resources & Risk Management

TABLE OF CONTENTS

Table of Contents	iii
Staffing Memos	1-15
Organizational Chart	16
Employee Classifications	17
Pay Plan Tables.....	18
Fire 15—Step Plan	19
Variable on Demand Positions	20
Job Class Descriptions	21
Pay Plan Reports	
Job Titles by Department/Division	22-31
Job Titles by Grade	32-40
Job Titles in Alphabetical Order	41-47
Full-Time Equivalent (FTE) By Department	48-49
Personnel Changes by Department	50
Impact of Personnel Changes by Fund	51

Agenda Item: 1.a

Meeting Date: February 16, 2023

MEMORANDUM

To: City Commission

Date: 2023-02-08

From: Theresa Smalling

Subject: Part I: Presentation of the 2022 City Organization Structure Review and Salary Study

Presenter(s): Theresa E Smalling, PHD, SPHR, Director of HR & Risk Management

Recommend: Staff recommends Commission discussion of the Consultant's reports and findings.

Epic Goal(s): #6 The City of Dunedin, as a premier employer, shall foster a diverse and highly engaged workforce through employee recruitment and attraction, workforce retention, and employee development and inclusion.

Boards & Committees: The preliminary report was presented to the Board of Finance on January 18, 2023

Budget Impact: TBD

Past Action: The City Commission Commission gave Staff approval to authorize Bolton to conduct an organizational review and salary study for the City.

Next Action: N/A

Attachments: [A. Dunedin Salary Study Report 2-16-23.pdf](#), [B. Dunedin FL Staffing and Organizational Assessment Final Report 2-10.pdf](#),

Background: In 2021 the City Commission gave consensus direction for Staff to coordinate

a comprehensive organizational study, the first of its kind at the City. The study had two main goals: 1) an organizational review of four operational departments - Community Development, Parks & Recreation, Public Works, and Utilities (retitled to Utilities & Engineering) with the objective to properly align the organization in terms of the operations and responsibilities of those City departments and divisions. Other objectives of the review were to ensure proper alignment of positions as well as equitable compensation for supervisory span of control, and also reduce duplication of effort across departments. The second goal of this exercise was to conduct a comprehensive salary study of the City's general employee and Variable/On Demand positions. with the objective of properly aligning the City's Pay Plan to address any internal/external salary inequities and compression issues. Bolton was selected during the Request for Proposal (RFP) process and Staff was given Commission approval to proceed with the review and study. Bolton conducted the salary study, while their sub-contractor, Matrix, was responsible for the organizational review.

Exhibit A is the final report regarding the salary study. Exhibit B. is the organizational review final report completed by Matrix. Dan Ripberger, Managing Director from Bolton and the City's main point of contact, will be in attendance to give a presentation to the Commission on both the organizational review and salary study.

Exhibit A Highlights

Bolton

Benefits, Actuarial, Investment & Compensation Consulting

Classification and Compensation Study Approach and Recommendations

Dan Ripberger
Managing Director, Practice Lead
(202) 670-5320
djripberger@boltonusa.com



Commission Briefing
and Discussion

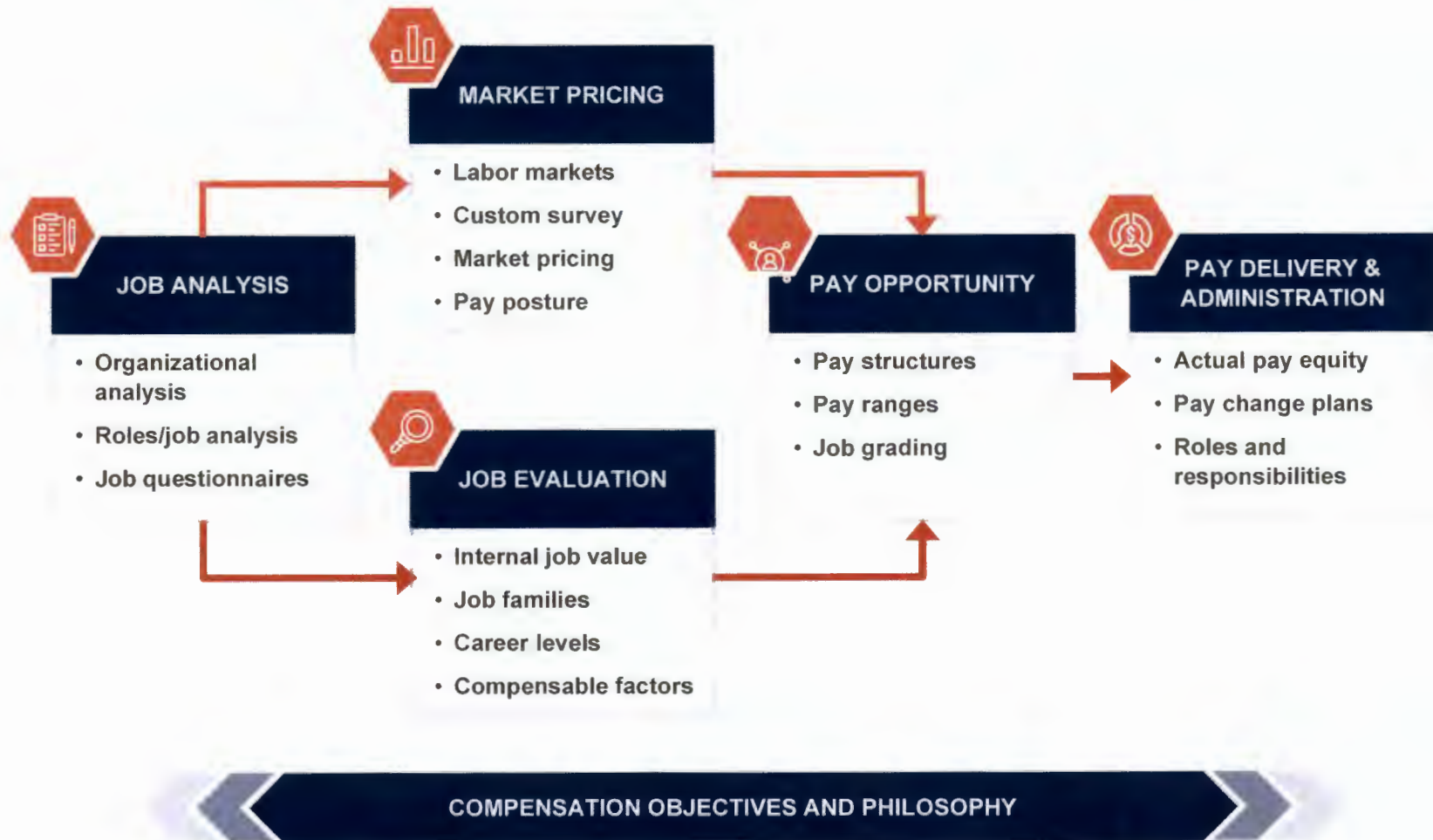
February 16, 2023

I. Introduction

- ▶ Our project: review the classification and compensation program and, if needed, recommend changes to improve its effectiveness.
 - ❑ Covered approximately 300 employees in 190 distinct job titles.
 - ❑ Excluded all Fire Department bargaining unit employees.
 - ❑ Elected officials and variable on-demand employee pay levels covered separately.
- ▶ Major Tasks:
 - ❑ Interviewed leadership and human resources;
 - ❑ Reviewed and analyzed the existing base pay program;
 - ❑ Analyzed existing written job content data and PIFs;
 - ❑ Conducted custom market survey and developed market rates from published surveys;
 - ❑ Identified gaps between current compensation levels and practices and those that best align; and
 - ❑ Recommended changes and enhancements to close gaps in compensation levels and/or compensation practices.

I. Introduction

- ▶ We employed our time-tested and systematic approach to review and recommend changes to Dunedin's program.



III. Review Findings – Market Alignment

► Pay Ranges

- ❑ Base pay range midpoints are aligned most closely with the market 50th percentile.

Sector	Pay Range as % of Market Statistic			
	25P	50P	65P	75P
Peers	112.6%	103.9%	94.5%	96.6%
Government	110.4%	95.1%	86.4%	85.4%
General	92.2%	84.5%	79.5%	76.1%
Combined	103.1%	89.5%	81.3%	80.2%

9

IV. Recommendations

► Base Pay Structure

- ❑ New structure calibrated to its approved markets and market targets.
 - The City should target the Government (Peers and other government agencies) market.
 - Market target should be the 65th percentile base pay to reflect the uniqueness of the area and the added accountability it requires.
- ❑ Ranges are divided into three equal parts – or **terciles** – to provide additional guidance as to where in the range a specific employee should be paid.
 - **Tercile 1:** base pay is at the low end of competitive and only newer or lesser experienced staff (relative to their job) should be in this tercile.
 - **Tercile 2:** base pay is fully competitive within this range.
 - **Tercile 3:** base pay is at the high end of competitive and only highly experienced staff (relative to their job) with good performance over time should be in this tercile.

IV. Recommendations

► General Open Range Structure

GRADE	BASE PAY RANGES (\$)					GRADE PROGRESSION	RANGE SPREAD
	MARKET RANGE				MAXIMUM		
	ENTRY	MR POINT 1	TARGET	MR POINT 3			
A48	15.00	16.50	17.25	18.00	19.50		30.0%
A49	16.12	17.73	18.54	19.34	20.96	7.5%	30.0%
A50	17.33	19.06	19.93	20.79	22.53	7.5%	30.0%
A51	18.27	20.71	21.92	23.15	25.58	10.0%	40.0%
A52	20.09	22.77	24.11	25.45	28.13	10.0%	40.0%
A53	22.10	25.05	26.52	28.00	30.94	10.0%	40.0%
A54	24.31	27.55	29.17	30.79	34.03	10.0%	40.0%
A55	26.74	30.31	32.09	33.88	37.44	10.0%	40.0%
A56	29.42	33.34	35.30	37.26	41.19	10.0%	40.0%
A57	32.36	36.67	38.83	40.98	45.30	10.0%	40.0%
A58	35.59	40.34	42.71	45.09	49.83	10.0%	40.0%
A59	39.15	44.37	46.98	49.59	54.81	10.0%	40.0%
A60	42.28	49.33	52.85	56.38	63.42	12.5%	50.0%
A61	47.57	55.50	59.46	63.43	71.36	12.5%	50.0%
A62	53.51	62.43	66.89	71.35	80.27	12.5%	50.0%
A63	60.20	70.23	75.25	80.26	90.30	12.5%	50.0%
A64	69.46	83.35	90.30	97.24	111.14	20.0%	60.0%
A65	83.35	100.02	108.36	116.69	133.36	20.0%	60.0%

IV. Recommendations

► Overview

- Maintain current job description process, but enhance format.
- Adopt a job evaluation system to help support internal equity.
- Improve job title consistency to enhance fairness perceptions.
- Implement new pay structure better aligned with market.
- Adopt a classification system and grade jobs.
- Revise pay policies as needed to align with new structure and job design.

9

IV. Recommendations

► Job Evaluation

❑ Adopt a Job Family and Career Level classification system:

- 34 job families.
- Career Groups and Career Levels defined by whole-job compensable factors.

Level Factor	Definition
Contribution	Degree of organizational scope for which a position is generally accountable and the role the position plays in accomplishing objectives.
Impact	Degree that a position's work assignments have on the achievement of the overall mission, goals and objectives. This factor measures positive effects rather than adverse impact resulting from failure.
Discretion/ Latitude	Degree of judgment, research, analysis and innovative thinking required to perform the work of the position. Consideration is given to policies and procedures which are provided as reference materials and guides to aid incumbents in performing their position work assignments.
Skill/Knowledge	Degree and type of knowledge, skills and abilities required to satisfactorily perform a position whether acquired through education and/or on the job experience. The level/type of knowledge may be impacted by a position's requirement for a particular skill or job requirement.

IV. Recommendations

► Job Evaluation (continued)

- ❑ Seven Career Groups with 23 Levels across job families.

Career Group	Number of Levels	Number of Jobs Assigned
Executive Management	2	2
People Management	4	41
Specialist Individual Contributor	4	29
Support Individual Contributor	5	41
Technician Individual Contributor	5	10
Trades, Operations and Labor	5	54
Fire and EMS (Management Only)	4	6

IV. Recommendations

► Job Classification and Grading

- ❑ Under our recommended approach, jobs would be graded through the classification process.
 - A **Classification** is a specified career level within a particular job family that has been analyzed, evaluated, benchmarked and assigned to the pay structure and grade/level.
 - A specific job is assigned to a classification based on the job description and other available job content data.
- ❑ It is important to note that a job is not a POSITION.
 - A job is simply a unit of work that has been classified to determine the range of pay the City would be willing to pay should an employee be hired for or promoted into it.
 - A position is assigned to a job; a job may have multiple positions. A position is employee-specific, requiring financial approval for the incumbent or candidate.

IV. Next Steps/Implementation

► Next Steps

- Finalize pay program design and administrative policies
- Create or revise final supporting documents and tools:
 - Job description template;
 - Job titling framework and definitions;
 - Job classification manual; and
 - Pay policies.
- Implement the new program.
 - Create an implementation process and plan;
 - Finalize job grading and review actual employee pay for market equity considerations;
 - Establish financial boundaries and develop a plan for any needed base pay adjustments;
 - Transition program design documents, data and tools from Bolton to the City;
 - Further orient management; and
 - Communicate to employees.

13



INTER-OFFICE MEMORANDUM

TO: City Commission

DATE: February 9, 2023

THROUGH: Jennifer K. Bramley, ICMA-CM, City Manager

FROM: Theresa E Smalling PhD, SPHR, Director of Human Resources & Risk Management ^{T&S}

SUBJECT: Staff Recommendations for 2022 Classification & Compensation Study/Organizational Review

Staff agrees with the recommendations put forth by Bolton as to the next steps in finalizing the 2022 Classification and Compensation Study including the new pay program design. Specifically,

1. Implement the new pay structure to be better aligned with market.
2. Adopt the classification system and grade jobs.
3. Revise pay policies as needed to align with new structure and job design.
4. Maintain current job description process, but enhance format according to Consultant's guidelines.
5. Adopt the recommended job evaluation system to help support internal equity.
6. Finalize job grading and review actual employee pay for market equity considerations.
7. Adopt a new hourly minimum wage of \$15 and adjust the base pay of any employees below the new minimum.
8. Establish financial boundaries and develop a plan for any needed base pay adjustments.
9. Communicate the plan to employees.

However, Staff needs additional time to orient department and division directors to the new pay structure, as well as ensure that any needed base pay adjustments to employee salaries are accurate and representative of current job duties. The Matrix report, which was submitted to the City last week, contains a number of recommended additional positions; Staff also requests additional time to disseminate this information and prioritize any new positions according to immediacy of need and budget constraints. We will bring all proposed salary adjustments along with any position requests and other recommended

benefit enhancements for Commission consideration during this year's FY 2024 budget process with a proposed effective date of October 1, 2023.

In the interim, we know that our employees have been more than patient with this process, and we have discussed an intermediate step with our Bolton Consultant. Given the approved FY23 budget contains a four percent (4%) set aside for salary adjustments, until we can present the new pay and benefits plan for Commission approval, Staff recommends a three percent (3%) adjustment to the salaries of all non-probationary, non-union general employees, with the balance of the one percent (1%) set aside remaining in a targeted reserve available for FY24 salary adjustments. The three percent (3%) adjustment would be retroactive to October 1, 2022, and be implemented in the pay period that includes March 1, 2023. Eligible employees will receive a lump sum that covers the first five months of this fiscal year, from October 1, 2022 to February 28, 2023; then each eligible employee's base pay would be adjusted by 3% as of March 1, 2023. Probationary employees who were hired on or before October 1, 2022 will receive the 3% adjustment once they successfully complete their probationary period. All Variable/On Demand employees will also receive a 3% adjustment to their base pay as of the pay period that includes March 1, 2023.

All general, non-union employees will also be eligible for a merit increase up to 3.5%, awarded October 1, 2023 in accordance with City policy. Employees who are eligible for an additional salary adjustment, after the 3% salary adjustment and merit increase have been applied, will receive the adjustment in the first pay period that includes October 1, 2023.

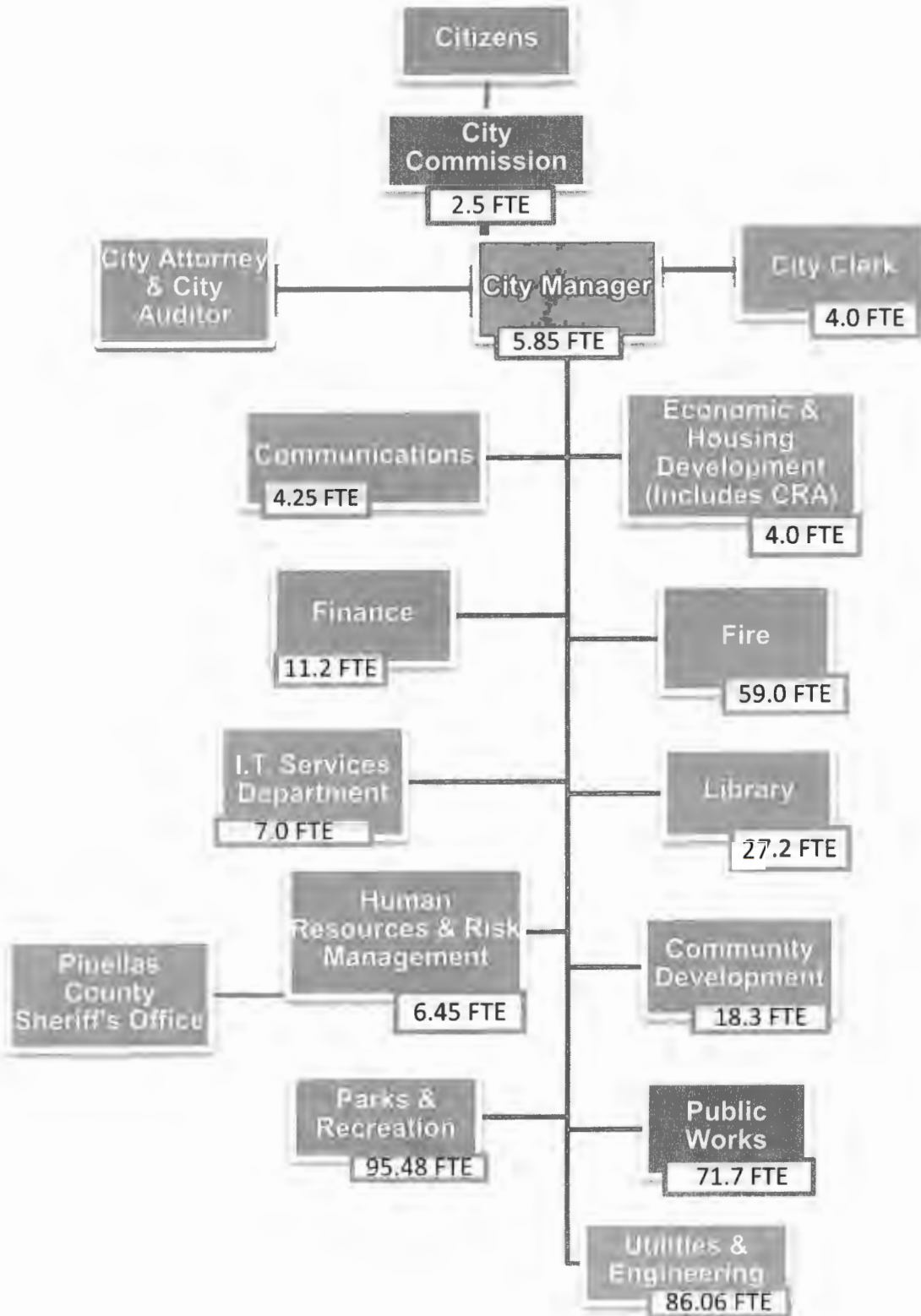
Budget Impact

The FY 2023 Budget includes four percent (4%) set aside for salary adjustments across all funds for the anticipated results of the FY 2022 Classification and Compensation Study. This equates to \$868,600 across all city funds, including \$428,500 set aside in the General Fund budget. The estimated cost of the proposed three percent (3%) adjustment to salaries in the General Fund is \$321,067 and the estimated cost of the proposed three percent (3%) adjustment to salaries across all city funds is \$650,487.

This results in a projected labor savings in the FY 2023 General Fund Budget of approximately \$107,433, and a projected labor savings in FY 2023 across all city funds Budget of approximately \$218,113. This balance of one percent (1%) set aside remaining will be a targeted reserve in FY 2023, and available for the FY 2024 salary and benefits budget development for the General Fund and across all city funds.

We believe this intermediate plan is a fair and equitable application that will encourage retention while we finalize the City's new pay program.

City of Dunedin Organizational Chart 402.99 FTE



**City of Dunedin
Employee Classifications
Effective October 1, 2014**

The following are the classifications for all City of Dunedin employees, based on hours worked:

Regular Employee - An employee who has been appointed to a position in the classified service in accordance with the Employee Service System Rules (ESSR), and is subject to a probationary period.

Regular Full-Time – A Regular employee in the classified service who regularly works a minimum of 35 hours per week, on a year-round basis.

Benefits Eligibility: All employee insurance and retirement benefits, as detailed in the City's Employee Benefit Highlights Booklet; accrual of Annual & Sick leave on a pro-rated basis, according to hours worked.

Regular Part-Time Plus – A Regular Employee in the classified service who works at least 30 hours but less than 35 hours per week, on a year-round basis. This employee will be eligible for medical insurance in accordance with the provisions of the Patient Protection Affordable Care Act (PPACA).

Benefits Eligibility: Medical insurance (City contribution for Single coverage, base plan only, with option to waive), Retirement benefits, accrual of Annual & Sick leave on a pro-rated basis, according to hours worked. No Waiver stipend if medical insurance is waived.

Regular Part-Time - A Regular Employee in the classified service who works less than 30 hours per week, on a year-round basis.

Benefits Eligibility: Retirement benefits, accrual of Annual & Sick leave on a pro-rated basis, according to hours worked.

Variable/On-Demand – An employee who is not a Regular Employee and is hired for a specific function (e.g. lifeguard, recreation leader) that may be longer than four months **and** throughout the year. The work is exclusively performed at certain seasons or periods of the year and may be continuous or carried on throughout the year. Employment periods may also be for a day or a few days at a time, depending upon the needs of the department and is called in to work on an as needed basis, with no default work schedule. The employee may perform different functions throughout the year, depending on the needs of the department; however, total work hours shall be less than 1,560 hours per year.

Benefits Eligibility: None

Seasonal/Temporary - A person who is not a Regular Employee and is hired on a temporary basis for a specific function, **and** only for a specific period lasting no more than three (3) consecutive months at a time. The employee may work in more than one temporary assignment in the City throughout the year, but no assignment shall last longer than three (3) months. Total work hours shall be less than 1,560 hours per year.

Benefits Eligibility: None.

**City of Dunedin
Pay Plan Tables
FY 24**

grade id	Annual			Bi-Weekly			Hourly		
	entry point	target rate	max point	entry point	target rate	max point	entry point	target rate	max point
A48	31,200.00	35,880.00	40,560.00	1,200.00	1,380.00	1,560.00	15.00	17.25	19.50
A49	33,529.60	38,563.20	43,596.80	1,289.60	1,483.20	1,676.80	16.12	18.54	20.96
A50	36,046.40	41,454.40	46,862.40	1,386.40	1,594.40	1,802.40	17.33	19.93	22.53
A51	38,001.60	45,593.60	53,206.40	1,461.60	1,753.60	2,046.40	18.27	21.92	25.58
A52	41,787.20	50,148.80	58,510.40	1,607.20	1,928.80	2,250.40	20.09	24.11	28.13
A53	45,968.00	55,161.60	64,355.20	1,768.00	2,121.60	2,475.20	22.10	26.52	30.94
A54	50,564.80	60,673.60	70,782.40	1,944.80	2,333.60	2,722.40	24.31	29.17	34.03
A55	55,619.20	66,747.20	77,875.20	2,139.20	2,567.20	2,995.20	26.74	32.09	37.44
A56	61,193.60	73,424.00	85,675.20	2,353.60	2,824.00	3,295.20	29.42	35.30	41.19
A57	67,308.80	80,766.40	94,224.00	2,588.80	3,106.40	3,624.00	32.36	38.83	45.30
A58	74,027.20	88,836.80	103,646.40	2,847.20	3,416.80	3,986.40	35.59	42.71	49.83
A59	81,432.00	97,718.40	114,004.80	3,132.00	3,758.40	4,384.80	39.15	46.98	54.81
A60	87,942.40	109,928.00	131,913.60	3,382.40	4,228.00	5,073.60	42.28	52.85	63.42
A61	98,945.60	123,676.80	148,428.80	3,805.60	4,756.80	5,708.80	47.57	59.46	71.36
A62	111,300.80	139,131.20	166,961.60	4,280.80	5,351.20	6,421.60	53.51	66.89	80.27
A63	125,216.00	156,520.00	187,824.00	4,816.00	6,020.00	7,224.00	60.20	75.25	90.30
A64	144,476.80	187,824.00	231,171.20	5,556.80	7,224.00	8,891.20	69.46	90.30	111.14
A65	173,388.80	225,388.80	277,430.40	6,668.80	8,668.80	10,670.40	83.36	108.36	133.38

The annual and bi-weekly are based on 2080 hours

FIRE LIEUTENANT		
GR/Step	FY24	
LT1	22.5627	65,702.59
LT2	23.2073	67,579.80
LT3	23.8520	69,457.02
LT4	24.4966	71,334.23
LT5	25.1413	73,211.46
LT6	25.7860	75,088.68
LT7	26.4306	76,965.89
LT8	27.0753	78,843.11
LT9	27.7199	80,720.33
LT10	28.3646	82,597.54
LT11	29.0092	84,474.77
LT12	29.6538	86,351.98
LT13	30.2985	88,229.18
LT14	30.9431	90,106.41
LT15	31.5878	91,983.63

FIREFIGHTER/PARAMEDIC		
GR/Step	FY24	
PM1	19.1373	55,727.82
PM2	19.8208	57,718.11
PM3	20.5043	59,708.37
PM4	21.1878	61,698.65
PM5	21.8712	63,688.92
PM6	22.5546	65,679.21
PM7	23.2381	67,669.47
PM8	23.9216	69,659.75
PM9	24.6051	71,650.03
PM10	25.2886	73,640.31
PM11	25.9721	75,630.56
PM12	26.6555	77,620.84
PM13	27.3390	79,611.12
PM14	28.0225	81,601.39
PM15	28.7059	83,591.66

FIREFIGHTER/EMT		
GR/Step	FY24	
EMT1	16.3497	47,610.31
EMT2	16.9336	49,310.68
EMT3	17.5175	51,011.04
EMT4	18.1014	52,711.41
EMT5	18.6854	54,411.78
EMT6	19.2693	56,112.16
EMT7	19.8532	57,812.51
EMT8	20.4371	59,512.88
EMT9	21.0211	61,213.25
EMT10	21.6049	62,913.61
EMT11	22.1888	64,613.99
EMT12	22.7728	66,314.35
EMT13	23.3567	68,014.71
EMT14	23.9406	69,715.08
EMT15	24.5246	71,415.46

** Due to rounding the hourly and/or salary may be off +/-

City of Dunedin
Variable on Demand/ Temporary Positions
FY 24

entrypoint	maxpoint	step progression
15.00	17.11	2%

Step 1 1 - 2 yrs
Step 2 3 - 4 yrs
Step 3 5 - 6 yrs
Step 4 7 + yrs

gradeid	Title	Career Family	Step 1	Step 2	Step 3	Step 4
VOD1	Recreation Leader Park Attendant Marina Attendant	Rec Assistant A Parks Assistant A Marina Assistant A	15.00	15.30	15.61	15.92
VOD2	Lifeguard I	Rec Assistant B	15.52	15.83	16.15	16.47
VOD3	Lifeguard WSI	Rec Assistant C	15.83	16.15	16.47	16.80
VOD4	WW/Water Srv Wrk Rec Leader SMIC Senior Lifeguard	Utilities Assistant A Rec Assistant D Rec Assistant D	16.12	16.44	16.77	17.11

Job Class Descriptions

Job Class Description	Base Pay Code	Group/BU	Location
1110 COMMISSION	100	2ELE	1400
2000 CITY MANAGER	100	1SAL	1100
2100 CITY CLERK	100	1SAL	1200
3000 EXECUTIVE	100	1SAL	Multi
4000 MANAGER	100	1SAL	Multi
4500 SUPERVISOR EXEMPT	100	1SAL	Multi
4510 SUPERVISOR NON EXEMPT	110	4HRL	Multi
5000 GENERAL FULL TIME EXEMPT	100	1SAL	Multi
5100 GENERAL FULL TIME NON EXEMPT	110	4HRL	Multi
5200 GENERAL PART TIME	110	6PTI	Multi
5300 PART TIME PLUS >30 < 35	110	6PTI	Multi
6000 LEAD WATER PLANT OPERATOR	110	4HRL	5165
6100 WATER PLANT OPERATOR	110	4HRL	5165
6200 WATER PLANT OPERATOR TRAIN	110	4HRL	5165
6300 WATER MAINTENANCE MECHANIC	110	4HRL	5165
6400 FLEET FOREMAN	110	4HRL	6200
6500 LEAD MECHANIC	110	4HRL	6200
6600 MECHANIC	110	4HRL	6200
6700 FLEET INVENTORY TECHNICIAN	110	4HRL	6200
7000 VARIABLE ON DEMAND/ TEMPORARY	110	9VAR	Multi
9000 FIRE CHIEF	100	3FEX	2201
9100 FIRE LIEUTENANT	110	5FHR	2220 2250
9200 FIRE DEPT ADMIN EXEMPT NON UNION	100	3FEX	2201
9250 FIRE DEPT ADMIN NON EXEMPT NON UNION	100	10FN	2201
9300 FIRE DISTRICT CHIEF	100	3FEX	2201
9505 FIREFIGHTER/ EMT	110	5FHR	2220
9507 FIREFIGHTER/ PARAMEDIC	110	5FHR	2220 2250

City of Dunedin
FY 24 Pay Plan
Positions by Department

Location	Cost Center Split	Position #	Position Desc	Job Class	Grade	Annual Salary Range			Hourly Range			
						Min Pay	Mid Pay	Max Pay	Hrly Min	Hrly Mid	Hrly Max	
CITY MANAGER												
CITY MANAGER - 1100												
STRATEGY & SUSTAINABILITY - 1100												
1100		10000	CITY MANAGER	2000	A65E	173,388.80	225,409.60	277,430.40	83.36	108.37	133.38	
1100	1100/4900	10001	DEPUTY CITY MANAGER	3000	A64E	144,476.80	187,824.00	231,171.20	69.46	90.30	111.14	
1100		10545	STRATEGY & SUSTAINABILITY MANAGER	4000	A58E	74,027.20	88,836.80	103,646.40	35.59	42.71	49.83	
1100		10520	SUSTAINABILITY PROGRAM MANAGER	4500	A54E	50,564.80	60,673.60	70,782.40	24.31	29.17	34.03	
1100		10003	EXECUTIVE OFFICE COORDINATOR	4500	A56E	61,193.60	73,434.40	85,675.20	29.42	35.31	41.19	
1100		10004	SR ADMINISTRATIVE ASSISTANT - CITY MANAGER	5100	A51H	38,001.60	45,604.00	53,208.40	18.27	21.93	25.58	
CITY CLERK												
CITY CLERK - 1200												
1200		10005	CITY CLERK	2100	A62E	111,300.80	139,131.20	166,961.60	53.51	66.89	80.27	
1200		10006	DEPUTY CITY CLERK	4000	A56E	61,193.60	73,434.40	85,675.20	29.42	35.31	41.19	
1200		10007	RECORDS MANAGEMENT SPECIALIST	5100	A52H	41,787.20	50,148.80	58,510.40	20.09	24.11	28.13	
1200		10008	SR ADMINISTRATIVE ASSISTANT - CITY CLERK	5100	A51H	38,001.60	45,604.00	53,208.40	18.27	21.93	25.58	
COMMISSION												
COMMISSION - 1400												
1400		10011	MAYOR	1110	C06E	15,000.00	15,000.00	15,000.00	14.42	14.42	14.42	
1400		10012	COMMISSIONER	1110	C06E	11,500.00	11,500.00	11,500.00	11.06	11.06	11.06	
1400		10013	COMMISSIONER	1110	C06E	11,500.00	11,500.00	11,500.00	11.06	11.06	11.06	
1400		10014	COMMISSIONER	1110	C06E	11,500.00	11,500.00	11,500.00	11.06	11.06	11.06	
1400		10015	COMMISSIONER	1110	C06E	11,500.00	11,500.00	11,500.00	11.06	11.06	11.06	
FINANCE												
ACCOUNTING/BUDGET/PURCHASING - 1506												
1506		10023	DIR OF FINANCE	3000	A63E	125,216.00	156,520.00	187,824.00	60.20	75.25	90.30	
1506		10024	ACCOUNTING MANAGER	4000	A60E	87,942.40	109,928.00	131,913.60	42.28	52.85	63.42	
1506		10025	BUDGET MANAGER	4000	A60E	87,942.40	109,928.00	131,913.60	42.28	52.85	63.42	
1506		10027	PURCHASING AGENT	5000	A57E	67,308.80	80,766.40	94,224.00	32.36	38.83	45.30	
1506		10026	SR ACCOUNTANT	4500	A55E	55,619.20	66,747.20	77,875.20	26.74	32.09	37.44	
1506		10028	BUDGET/ FINANCIAL ANALYST	5000	A54E	50,564.80	60,673.60	70,782.40	24.31	29.17	34.03	
1506		10582	BUYER	5000	A54E	50,564.80	60,673.60	70,782.40	24.31	29.17	34.03	
1506		10546	ACCOUNTING SPECIALIST	5000	A52E	41,767.20	50,148.80	58,510.40	20.09	24.11	28.13	
1506		10030	ADMINISTRATIVE COORDINATOR - FINANCE	5100	A52H	41,787.20	50,148.80	58,510.40	20.09	24.11	28.13	
1506		10031	ACCOUNTS TECHNICIAN	5100	A52H	41,787.20	50,148.80	58,510.40	20.09	24.11	28.13	
1506		10032	ACCOUNTS TECHNICIAN	5100	A52H	41,787.20	50,148.80	58,510.40	20.09	24.11	28.13	
INFORMATION TECH SERVICES												
INFORMATION TECH SERVICES - 1507												
1507		10033	DIR OF IT SERVICES	3000	A62E	111,300.80	139,131.20	166,961.60	53.51	66.89	80.27	
1507		10034	IT SENIOR SYSTEMS ENGINEER	5000	A59E	81,432.00	97,718.40	114,004.80	39.15	46.98	54.81	
1507		10509	IT NETWORK ADMINISTRATOR II	5000	A57E	67,308.80	80,766.40	94,224.00	32.36	38.83	45.30	
1507		10510	IT NETWORK ADMINISTRATOR I	5000	A56E	61,193.60	73,434.40	85,675.20	29.42	35.31	41.19	
1507		10480	IT SERVICES TECHNICIAN II	5100	A54H	50,564.80	60,673.60	70,782.40	24.31	29.17	34.03	
1507		10548	IT SERVICES TECHNICIAN II	5100	A54H	50,564.80	60,673.60	70,782.40	24.31	29.17	34.03	
1507		10038	IT SERVICES TECHNICIAN I	5100	A52H	41,787.20	50,148.80	58,510.40	20.09	24.11	28.13	

22

City of Dunedin
 FY 24 Pay Plan
 Positions by Department

Location	Cost Center Split	Position #	Position Desc	Job Class	Grade	Annual Salary Range			Hourly Range		
						Min Pay	Mid Pay	Max Pay	Hrly Min	Hrly Mid	Hrly Max
HUMAN RESOURCES & RISK MGMT											
HUMAN RESOURCES - 1611											
1611	1611/1616/1612	10039	DIR OF HR & RISK MANAGEMENT	3000	A62E	111,300.80	139,131.20	166,961.60	53.51	66.89	80.27
1611	1611/1616/1612	10540	HUMAN RESOURCES MANAGER	4000	A58E	74,027.20	88,836.80	103,646.40	35.59	42.71	49.83
1611	1611/1616	10547	SR COMPENSATION & BENEFITS COORDINATOR	5000	A57E	67,308.80	80,766.40	94,224.00	32.36	38.83	45.30
1611	1612/1611	10515	HR/RISK MANAGEMENT ASSISTANT	5100	A52H	41,787.20	50,148.80	58,510.40	20.09	24.11	28.13
1611		10525	ADMINISTRATIVE ASSISTANT - HR	5100	A50H	36,046.40	41,454.40	46,862.40	17.33	19.93	22.53
RISK MANAGEMENT - 1612											
1612	1612/1616/1611	10042	HR/RISK MANAGEMENT COORDINATOR	5000	A55E	55,619.20	66,747.20	77,875.20	26.74	32.09	37.44
COMMUNITY DEVELOPMENT											
COMMUNITY DEVELOPMENT - 1701											
1701	1701/1702	10044	DIR OF COMMUNITY DEVELOPMENT	3000	A62E	111,300.80	139,131.20	166,961.60	53.51	66.89	80.27
1701	1701/1612/1702	10504	COMMUNITY DEV PROJECT MANAGER	5000	A58E	74,027.20	88,836.80	103,646.40	35.59	42.71	49.83
1701		10048	BUSINESS MANAGER	4000	A56E	61,193.60	73,434.40	85,675.20	29.42	35.31	41.19
1701	1701/1702	10475	CODE COMPLIANCE SUPERVISOR	4500	A56E	61,193.60	73,434.40	85,675.20	29.42	35.31	41.19
1701		10046	PLANNER II	5000	A56E	61,193.60	73,434.40	85,675.20	29.42	35.31	41.19
1701	1701/1702	10054	CODE COMPLIANCE INSPECTOR	5100	A54H	50,564.80	60,673.60	70,782.40	24.31	29.17	34.03
1701	1701/1702	10055	CODE COMPLIANCE INSPECTOR	5100	A54H	50,564.80	60,673.60	70,782.40	24.31	29.17	34.03
1701	1701/1702	10486	PLANNER I	5000	A54E	50,564.80	60,673.60	70,782.40	24.31	29.17	34.03
1701	1701/1702	10655	ADMINISTRATIVE ASSISTANT - COMMUNITY DEV	5100	A50H	36,046.40	41,454.40	46,862.40	17.33	19.93	22.53
BUILDING SERVICES- 1702											
1702	1702/1701	10045	ASSIST DIR OF COMMUNITY DEVELOPMENT	4000	A61E	98,945.60	123,687.20	148,428.80	47.57	59.47	71.36
1702		10516	CHIEF BUILDING INSPECTOR/PLANS EXAMINER	4000	A58E	74,027.20	88,836.80	103,646.40	35.59	42.71	49.83
1702		10550	SR BUILDING INSPECTOR	5100	A56H	61,193.60	73,434.40	85,675.20	29.42	35.31	41.19
1702		10551	SR BUILDING INSPECTOR	5100	A56H	61,193.60	73,434.40	85,675.20	29.42	35.31	41.19
1702		10552	BUILDING INSPECTOR	5100	A54H	50,564.80	60,673.60	70,782.40	24.31	29.17	34.03
1702		10553	BUILDING INSPECTOR	5100	A54H	50,564.80	60,673.60	70,782.40	24.31	29.17	34.03
1702	1702/1701	10057	COMMUNITY DEVELOPMENT TECHNICIAN	5100	A52H	41,787.20	50,148.80	58,510.40	20.09	24.11	28.13
1702	1702/1701	10058	COMMUNITY DEVELOPMENT TECHNICIAN	5100	A52H	41,787.20	50,148.80	58,510.40	20.09	24.11	28.13
1702	1702/1701	10059	COMMUNITY DEVELOPMENT TECHNICIAN	5100	A52H	41,787.20	50,148.80	58,510.40	20.09	24.11	28.13
ECONOMIC & HOUSING DEVELOPMENT											
COMMUNITY REDEVELOPMENT AGENCY (CRA) - 1											
1716	1716/1801	10062	DIR OF ECONOMIC & HOUSING DEVELOPMENT	3000	A62E	111,300.80	139,131.20	166,961.60	53.51	66.89	80.27
1716	1716/1801	10063	ECONOMIC DEVELOPMENT SPECIALIST	5000	A54E	50,564.80	60,673.60	70,782.40	24.31	29.17	34.03
1716	1716/1801	10496	SPECIAL PROJECT COORDINATOR	5100	A54H	50,564.80	60,673.60	70,782.40	24.31	29.17	34.03
ECONOMIC & HOUSING DEVELOPMENT - 1801											
1801	1801/1716	10495	ECONOMIC DEVELOPMENT PROJECT MANAGER	4500	A56E	61,193.60	73,434.40	85,675.20	29.42	35.31	41.19
COMMUNICATIONS											
COMMUNICATIONS - 1900											
1900		10483	DIR OF COMMUNICATIONS	3000	A62E	111,300.80	139,131.20	166,961.60	53.51	66.89	80.27
1900		10549	SR COMMUNICATIONS SPECIALIST	5000	A56E	61,193.60	73,434.40	85,675.20	29.42	35.31	41.19
1900		10526	MULTIMEDIA PUBLIC INFORMATION COORDINATOR	5000	A54E	50,564.80	60,673.60	70,782.40	24.31	29.17	34.03
1900		10514	WEBSITE/DIGITAL COORDINATOR	5000	A54E	50,564.80	60,673.60	70,782.40	24.31	29.17	34.03

23

City of Dunedin
FY 24 Pay Plan
Positions by Department

Location	Cost Center Split	Position #	Position Desc	Job Class	Grade	Annual Salary Range			Hourly Range		
						Min Pay	Mid Pay	Max Pay	Hrly Min	Hrly Mid	Hrly Max
FIRE											
FIRE ADMIN - 2201											
2201		10070	FIRE CHIEF	9000	F62E	111,300.80	139,131.20	166,961.60	53.51	66.89	80.27
2201		10477	DEPUTY CHIEF/ FIRE MARSHAL	9200	F61E	98,945.60	123,687.20	148,428.80	47.57	59.47	71.36
2201		10073	DIVISION CHIEF OF TRAINING	9200	F60E	87,942.40	109,928.00	131,913.60	42.28	52.85	63.42
2201		10478	DIVISION CHIEF OF LOGISTICS	9200	F60E	87,942.40	109,928.00	131,913.60	42.28	52.85	63.42
2201		10554	DEPUTY FIRE MARSHAL	9200	F56E	74,027.20	88,836.80	103,646.40	35.59	42.71	49.83
2201		10075	DISTRICT CHIEF *	9300	F57E	94,232.32	113,072.96	131,913.60	32.36	38.83	45.30
2201		10076	DISTRICT CHIEF *	9300	F57E	94,232.32	113,072.96	131,913.60	32.36	38.83	45.30
2201		10077	DISTRICT CHIEF *	9300	F57E	94,232.32	113,072.96	131,913.60	32.36	38.83	45.30
2201		10651	FIRE INSPECTOR	9250	F54H	50,564.80	60,673.60	70,782.40	24.31	29.17	34.03
2201		10080	ADMINISTRATIVE COORDINATOR - FIRE	5100	A52H	41,787.20	50,148.80	58,510.40	20.09	24.11	28.13
* annual salary based on 2912 hours											
FIRE OPERATIONS - 2220											
2220		10085	FIRE LIEUTENANT*	9100	FNEU	65,702.59	78,843.11	91,983.63	22.56	27.08	31.59
2220		10087	FIRE LIEUTENANT*	9100	FNEU	65,702.59	78,843.11	91,983.63	22.56	27.08	31.59
2220		10088	FIRE LIEUTENANT*	9100	FNEU	65,702.59	78,843.11	91,983.63	22.56	27.08	31.59
2220		10089	FIRE LIEUTENANT*	9100	FNEU	65,702.59	78,843.11	91,983.63	22.56	27.08	31.59
2220		10091	FIRE LIEUTENANT*	9100	FNEU	65,702.59	78,843.11	91,983.63	22.56	27.08	31.59
2220		10092	FIRE LIEUTENANT*	9100	FNEU	65,702.59	78,843.11	91,983.63	22.56	27.08	31.59
2220		10093	FIREFIGHTER/ PARAMEDIC*	9507	FNEP	55,727.82	69,659.74	83,591.66	19.14	23.92	28.71
2220		10094	FIREFIGHTER/ PARAMEDIC*	9507	FNEP	55,727.82	69,659.74	83,591.66	19.14	23.92	28.71
2220		10095	FIREFIGHTER/ PARAMEDIC*	9507	FNEP	55,727.82	69,659.74	83,591.66	19.14	23.92	28.71
2220		10096	FIREFIGHTER/ PARAMEDIC*	9507	FNEP	55,727.82	69,659.74	83,591.66	19.14	23.92	28.71
2220		10098	FIREFIGHTER/ PARAMEDIC*	9507	FNEP	55,727.82	69,659.74	83,591.66	19.14	23.92	28.71
2220		10100	FIREFIGHTER/ PARAMEDIC*	9507	FNEP	55,727.82	69,659.74	83,591.66	19.14	23.92	28.71
2220		10101	FIREFIGHTER/ PARAMEDIC*	9507	FNEP	55,727.82	69,659.74	83,591.66	19.14	23.92	28.71
2220		10102	FIREFIGHTER/ PARAMEDIC*	9507	FNEP	55,727.82	69,659.74	83,591.66	19.14	23.92	28.71
2220		10104	FIREFIGHTER/ PARAMEDIC*	9507	FNEP	55,727.82	69,659.74	83,591.66	19.14	23.92	28.71
2220		10105	FIREFIGHTER/ PARAMEDIC*	9507	FNEP	55,727.82	69,659.74	83,591.66	19.14	23.92	28.71
2220		10109	FIREFIGHTER/ PARAMEDIC*	9507	FNEP	55,727.82	69,659.74	83,591.66	19.14	23.92	28.71
2220		10110	FIREFIGHTER/ PARAMEDIC*	9507	FNEP	55,727.82	69,659.74	83,591.66	19.14	23.92	28.71
2220		10111	FIREFIGHTER/ PARAMEDIC*	9507	FNEP	55,727.82	69,659.74	83,591.66	19.14	23.92	28.71
2220		10112	FIREFIGHTER/ PARAMEDIC*	9507	FNEP	55,727.82	69,659.74	83,591.66	19.14	23.92	28.71
2220		10116	FIREFIGHTER/ PARAMEDIC*	9507	FNEP	55,727.82	69,659.74	83,591.66	19.14	23.92	28.71
2220		10117	FIREFIGHTER/ PARAMEDIC*	9507	FNEP	55,727.82	69,659.74	83,591.66	19.14	23.92	28.71
2220		10120	FIREFIGHTER/ PARAMEDIC*	9507	FNEP	55,727.82	69,659.74	83,591.66	19.14	23.92	28.71
2220		10121	FIREFIGHTER/ PARAMEDIC*	9507	FNEP	55,727.82	69,659.74	83,591.66	19.14	23.92	28.71
2220		10438	FIREFIGHTER/ PARAMEDIC*	9507	FNEP	55,727.82	69,659.74	83,591.66	19.14	23.92	28.71
2220		10439	FIREFIGHTER/ PARAMEDIC*	9507	FNEP	55,727.82	69,659.74	83,591.66	19.14	23.92	28.71
2220		10532	FIREFIGHTER/ PARAMEDIC*	9507	FNEP	55,727.82	69,659.74	83,591.66	19.14	23.92	28.71
2220		10122	FIREFIGHTER/ EMT*	9505	FNEE	47,610.31	59,512.89	71,415.46	16.35	20.44	24.52
2220		10123	FIREFIGHTER/ EMT*	9505	FNEE	47,610.31	59,512.89	71,415.46	16.35	20.44	24.52
2220		10124	FIREFIGHTER/ EMT*	9505	FNEE	47,610.31	59,512.89	71,415.46	16.35	20.44	24.52
2220		10125	FIREFIGHTER/ EMT*	9505	FNEE	47,610.31	59,512.89	71,415.46	16.35	20.44	24.52
2220		10451	FIREFIGHTER/ EMT*	9505	FNEE	47,610.31	59,512.89	71,415.46	16.35	20.44	24.52
2220		10521	FIREFIGHTER/ EMT*	9505	FNEE	47,610.31	59,512.89	71,415.46	16.35	20.44	24.52
2220		10522	FIREFIGHTER/ EMT*	9505	FNEE	47,610.31	59,512.89	71,415.46	16.35	20.44	24.52
2220		10537	FIREFIGHTER/ EMT*	9505	FNEE	47,610.31	59,512.89	71,415.46	16.35	20.44	24.52
2220		10543	FIREFIGHTER/ EMT*	9505	FNEE	47,610.31	59,512.89	71,415.46	16.35	20.44	24.52

24

City of Dunedin
 FY 24 Pay Plan
 Positions by Department

Location	Cost Center Split	Position #	Position Desc	Job Class	Grade	Annual Salary Range			Hourly Range		
						Min Pay	Mid Pay	Max Pay	Hrly Min	Hrly Mid	Hrly Max
FIRE EMS - 2250											
			* annual salary based on 2912 hours								
2250		10074	DIVISION CHIEF OF EMS	9200	F60E	87,942.40	109,928.00	131,913.60	42.28	52.85	63.42
2250		10081	FIRE LIEUTENANT*	9100	FNEU	65,702.59	78,843.11	91,983.63	22.56	27.08	31.59
2250		10082	FIRE LIEUTENANT*	9100	FNEU	65,702.59	78,843.11	91,983.63	22.56	27.08	31.59
2250		10083	FIRE LIEUTENANT*	9100	FNEU	65,702.59	78,843.11	91,983.63	22.56	27.08	31.59
2250		10084	FIRE LIEUTENANT*	9100	FNEU	65,702.59	78,843.11	91,983.63	22.56	27.08	31.59
2250		10086	FIRE LIEUTENANT*	9100	FNEU	65,702.59	78,843.11	91,983.63	22.56	27.08	31.59
2250		10090	FIRE LIEUTENANT*	9100	FNEU	65,702.59	78,843.11	91,983.63	22.56	27.08	31.59
2250		10097	FIREFIGHTER/ PARAMEDIC*	9507	FNEP	55,727.82	69,659.74	83,591.66	19.14	23.92	28.71
2250		10099	FIREFIGHTER/ PARAMEDIC*	9507	FNEP	55,727.82	69,659.74	83,591.66	19.14	23.92	28.71
2250		10106	FIREFIGHTER/ PARAMEDIC*	9507	FNEP	55,727.82	69,659.74	83,591.66	19.14	23.92	28.71
2250		10108	FIREFIGHTER/ PARAMEDIC*	9507	FNEP	55,727.82	69,659.74	83,591.66	19.14	23.92	28.71
2250		10113	FIREFIGHTER/ PARAMEDIC*	9507	FNEP	55,727.82	69,659.74	83,591.66	19.14	23.92	28.71
2250		10118	FIREFIGHTER/ PARAMEDIC*	9507	FNEP	55,727.82	69,659.74	83,591.66	19.14	23.92	28.71
			* annual salary based on 2912 hours								
LIBRARY											
LIBRARY - 4140											
4140		10126	LIBRARY DIRECTOR	3000	A62E	111,300.80	139,131.20	166,961.60	53.51	66.89	80.27
4140		10563	ASSISTANT LIBRARY DIRECTOR	4000	A58E	74,027.20	88,836.80	103,646.40	35.59	42.71	49.83
4140		10564	LIBRARY MANAGER	4500	A56E	61,193.60	73,434.40	85,675.20	29.42	35.31	41.19
4140		10565	LIBRARY MANAGER	4500	A56E	61,193.60	73,434.40	85,675.20	29.42	35.31	41.19
4140		10132	LIBRARIAN	5100	A53H	45,968.00	55,161.60	64,355.20	22.10	26.52	30.94
4140		10133	LIBRARIAN	5100	A53H	45,968.00	55,161.60	64,355.20	22.10	26.52	30.94
4140		10134	LIBRARIAN	5100	A53H	45,968.00	55,161.60	64,355.20	22.10	26.52	30.94
4140		10135	LIBRARIAN	5100	A53H	45,968.00	55,161.60	64,355.20	22.10	26.52	30.94
4140		10136	LIBRARIAN	5100	A53H	36,865.92	47,925.67	58,985.42	17.72	23.04	28.36
4140		10513	LIBRARIAN	5100	A53H	45,968.00	55,161.60	64,355.20	22.10	26.52	30.94
4140		10137	LIBRARIAN (PT 40 HR)	5200	P53H	22,984.00	27,580.80	32,177.60	22.10	26.52	30.94
4140		10138	LIBRARIAN (PT 56 HR)	5200	P53H	32,177.60	38,613.12	45,048.64	22.10	26.52	30.94
4140		10544	LIBRARIAN (PT 40 HR)	5200	P53H	22,984.00	27,580.80	32,177.60	22.10	26.52	30.94
4140		10127	ADMINISTRATIVE COORDINATOR - LIBRARY	5100	A52H	41,787.20	50,148.80	58,510.40	20.09	24.11	28.13
4140		10538	SR ADMINISTRATIVE ASSISTANT - LIBRARY	5100	A51H	38,001.60	45,604.00	53,206.40	18.27	21.93	25.58
4140		10144	SR LIBRARY ASSISTANT	5100	A50H	36,046.40	41,454.40	46,862.40	17.33	19.93	22.53
4140		10145	SR LIBRARY ASSISTANT	5100	A50H	36,046.40	41,454.40	46,862.40	17.33	19.93	22.53
4140		10467	SR LIBRARY ASSISTANT	5100	A50H	36,046.40	41,454.40	46,862.40	17.33	19.93	22.53
4140		10517	SR LIBRARY ASSISTANT	5100	A50H	36,046.40	41,454.40	46,862.40	17.33	19.93	22.53
4140		10566	SR LIBRARY ASSISTANT	5100	A50H	36,046.40	41,454.40	46,862.40	17.33	19.93	22.53
4140		10567	SR LIBRARY ASSISTANT	5100	A50H	36,046.40	41,454.40	46,862.40	17.33	19.93	22.53
4140		10568	SR LIBRARY ASSISTANT	5100	A50H	36,046.40	41,454.40	46,862.40	17.33	19.93	22.53
4140		10146	LIBRARY ASSISTANT	5100	A49H	33,529.60	38,563.20	43,596.80	16.12	18.54	20.96
4140		10147	LIBRARY ASSISTANT	5100	A49H	33,529.60	38,563.20	43,596.80	16.12	18.54	20.96
4140		10150	LIBRARY ASSISTANT	5100	A49H	33,529.60	38,563.20	43,596.80	16.12	18.54	20.96
4140		10151	LIBRARY ASSISTANT	5100	A49H	33,529.60	38,563.20	43,596.80	16.12	18.54	20.96
4140		10463	LIBRARY ASSISTANT (PT 40 HR)	5200	P49H	16,784.80	19,281.60	21,798.40	16.12	18.54	20.96
4140		10464	LIBRARY ASSISTANT (PT 40 HR)	5200	P49H	16,784.80	19,281.60	21,798.40	16.12	18.54	20.96
4140		10152	LIBRARY AIDE (PT 40 HR)	5200	P48H	15,600.00	17,940.00	20,280.00	15.00	17.25	19.50
4140		10153	LIBRARY AIDE (PT 40 HR)	5200	P48H	15,600.00	17,940.00	20,280.00	15.00	17.25	19.50

25

City of Dunedin
FY 24 Pay Plan
Positions by Department

Location	Cost Center Split	Position #	Position Desc	Job Class	Grade	Annual Salary Range			Hourly Range		
						Min Pay	Mid Pay	Max Pay	Hrly Min	Hrly Mid	Hrly Max
PARKS & RECREATION											
PARKS & REC ADMIN - 4501											
4501		10154	DIR OF PARKS AND RECREATION	3000	A62E	111,300.80	139,131.20	166,961.60	53.51	66.89	80.27
4501		10158	PARKS & REC ADMIN SUPERINTENDENT	4000	A60E	87,942.40	109,928.00	131,913.60	42.28	52.85	63.42
4501		10485	PARKS & REC SUPERINTENDENT	4000	A60E	87,942.40	109,928.00	131,913.60	42.28	52.85	63.42
4501		10574	RECREATION MARKETING COORDINATOR	4500	A56E	61,193.60	73,434.40	85,675.20	29.42	35.31	41.19
4501		10502	ADMINISTRATIVE COORDINATOR - PARKS & REC	5100	A52H	41,787.20	50,148.80	58,510.40	20.09	24.11	28.13
4501		10159	SR ADMINISTRATIVE ASSISTANT - RECREATION ADMIN	5100	A51H	38,001.60	45,604.00	53,206.40	18.27	21.93	25.58
STIRLING LINKS - 4242											
4242		10631	PARK ATTENDANT (PT 50 HR)	5200	P48H	19,500.00	22,425.00	25,350.00	15.00	17.25	19.50
4242		10632	PARK ATTENDANT (PT 50 HR)	5200	P48H	19,500.00	22,425.00	25,350.00	15.00	17.25	19.50
4242		10633	PARK ATTENDANT (PT 50 HR)	5200	P48H	19,500.00	22,425.00	25,350.00	15.00	17.25	19.50
4242		10634	PARK ATTENDANT (PT 50 HR)	5200	P48H	19,500.00	22,425.00	25,350.00	15.00	17.25	19.50
4242		10635	PARK ATTENDANT (PT 50 HR)	5200	P48H	19,500.00	22,425.00	25,350.00	15.00	17.25	19.50
4242		10636	PARK ATTENDANT (PT 40 HR)	5200	P48H	15,600.00	17,940.00	20,280.00	15.00	17.25	19.50
4242		10637	PARK ATTENDANT (PT 40 HR)	5200	P48H	15,600.00	17,940.00	20,280.00	15.00	17.25	19.50
4242		10638	PARK ATTENDANT (PT 40 HR)	5200	P48H	15,600.00	17,940.00	20,280.00	15.00	17.25	19.50
4242		10639	PARK ATTENDANT (PT 40 HR)	5200	P48H	15,600.00	17,940.00	20,280.00	15.00	17.25	19.50
4242		10640	PARK ATTENDANT (PT 40 HR)	5200	P48H	15,600.00	17,940.00	20,280.00	15.00	17.25	19.50
AQUATICS - 4250											
4250		10181	RECREATION PROGRAM COORDINATOR - 4250	4500	A57E	67,308.80	80,766.40	94,224.00	32.36	38.83	45.30
4250		10459	HEAD LIFEGUARD	5100	A52H	41,787.20	50,148.80	58,510.40	20.09	24.11	28.13
4250		10656	SENIOR LIFEGUARD (PT 50 HR)	5200	P49H	19,500.00	22,425.00	25,350.00	15.00	17.25	19.50
4250		10648	RECREATION LEADER I - 4250 (PT 50 HR)	5200	P48H	19,500.00	22,425.00	25,350.00	15.00	17.25	19.50
ATHLETICS - 4251											
4251		10498	RECREATION PROGRAM COORDINATOR - 4251	4500	A57E	67,308.80	80,766.40	94,224.00	32.36	38.83	45.30
COMMUNITY CENTER - 4252											
4252		10162	RECREATION PROGRAM COORDINATOR - 4252	4500	A57E	67,308.80	80,766.40	94,224.00	32.36	38.83	45.30
4252		10569	FITNESS PROGRAM COORDINATOR	5100	A54H	50,564.80	60,673.60	70,782.40	24.31	29.17	34.03
4252		10167	RECREATION LEADER III - 4252	5100	A51H	38,001.60	45,604.00	53,206.40	18.27	21.93	25.58
4252		10472	RECREATION LEADER III - 4252	5100	A51H	38,001.60	45,604.00	53,206.40	18.27	21.93	25.58
4252		10177	RECREATION LEADER II - 4252	5100	A50H	36,046.40	41,454.40	46,862.40	17.33	19.93	22.53
4252		10180	RECREATION LEADER II - 4252	5100	A50H	36,046.40	41,454.40	46,862.40	17.33	19.93	22.53
4252		10181	RECREATION LEADER II - 4252	5100	A50H	36,046.40	41,454.40	46,862.40	17.33	19.93	22.53
MLK CENTER - 4253											
4253		10163	RECREATION PROGRAM COORDINATOR - 4253	4500	A57E	67,308.80	80,766.40	94,224.00	32.36	38.83	45.30
4253		10169	RECREATION LEADER III - 4253	5100	A51H	38,001.60	45,604.00	53,206.40	18.27	21.93	25.58
4253		10170	RECREATION LEADER III - 4253	5100	A51H	38,001.60	45,604.00	53,206.40	18.27	21.93	25.58
4253		10175	RECREATION LEADER II - 4253	5100	A50H	36,046.40	41,454.40	46,862.40	17.33	19.93	22.53
4253		10641	RECREATION LEADER I - 4253 (PT 40 HR)	5200	P48H	15,600.00	17,940.00	20,280.00	15.00	17.25	19.50
4253		10642	RECREATION LEADER I - 4253 (PT 40 HR)	5200	P48H	15,600.00	17,940.00	20,280.00	15.00	17.25	19.50
HALE CENTER - 4254											
4254		10160	RECREATION PROGRAM COORDINATOR - 4254	4500	A57E	67,308.80	80,766.40	94,224.00	32.36	38.83	45.30
4254		10168	RECREATION LEADER III - 4254	5100	A51H	38,001.60	45,604.00	53,206.40	18.27	21.93	25.58
4254		10174	RECREATION LEADER II - 4254	5100	A50H	36,046.40	41,454.40	46,862.40	17.33	19.93	22.53
4254		10182	RECREATION LEADER II - 4254	5100	A50H	36,046.40	41,454.40	46,862.40	17.33	19.93	22.53
REGISTRATION ID - 4258											
4258		10173	RECREATION TECHNICIAN	5100	A52H	41,787.20	50,148.80	58,510.40	20.09	24.11	28.13
4258		10172	RECREATION LEADER III - 4258	5100	A51H	38,001.60	45,604.00	53,206.40	18.27	21.93	25.58

26

City of Dunedin
FY 24 Pay Plan
Positions by Department

Location	Cost Center Split	Position #	Position Desc	Job Class	Grade	Annual Salary Range			Hourly Range		
						Min Pay	Mid Pay	Max Pay	Hrly Min	Hrly Mid	Hrly Max
SPECIAL EVENTS - 4259											
	4259	10164	SPECIAL EVENTS COORDINATOR	5000	A58E	74,027.20	88,836.80	103,646.40	35.59	42.71	49.83
	4259	10570	SPECIAL EVENTS PROGRAMMER	5100	A52H	41,787.20	50,148.80	58,510.40	20.09	24.11	28.13
YOUTH SERVICES - 4260											
	4260	10677	RECREATION PROGRAM COORDINATOR - 4260	4500	A57E	67,308.80	80,766.40	94,224.00	32.36	38.83	45.30
	4260	10571	RECREATION LEADER III BASP SUPERVISOR	4510	A52H	41,787.20	50,148.80	58,510.40	20.09	24.11	28.13
	4260	10572	RECREATION LEADER III BASP SUPERVISOR	4510	A52H	41,787.20	50,148.80	58,510.40	20.09	24.11	28.13
	4260	10573	RECREATION LEADER III BASP SUPERVISOR	4510	A52H	41,787.20	50,148.80	58,510.40	20.09	24.11	28.13
	4260	10184	RECREATION LEADER II - 4260	5100	A50H	36,046.40	41,454.40	46,862.40	17.33	19.93	22.53
	4260	10654	RECREATION LEADER I SMIC - 4260 (PT 40HR)	5200	P49H	16,764.80	19,281.60	21,798.40	16.12	18.54	20.96
	4260	10643	RECREATION LEADER I - 4260 (PT 40 HR)	5200	P48H	15,600.00	17,940.00	20,280.00	15.00	17.25	19.50
	4260	10644	RECREATION LEADER I - 4260 (PT 40 HR)	5200	P48H	15,600.00	17,940.00	20,280.00	15.00	17.25	19.50
	4260	10645	RECREATION LEADER I - 4260 (PT 40 HR)	5200	P46H	15,600.00	17,940.00	20,280.00	15.00	17.25	19.50
	4260	10646	RECREATION LEADER I - 4260 (PT 40 HR)	5200	P48H	15,600.00	17,940.00	20,280.00	15.00	17.25	19.50
	4260	10647	RECREATION LEADER I - 4260 (PT 50 HR)	5200	P48H	19,500.00	22,425.00	25,350.00	15.00	17.25	19.50
	4260	10650	RECREATION LEADER I - 4260 (PT 50 HR)	5200	P48H	19,500.00	22,425.00	25,350.00	15.00	17.25	19.50
PARKS - 4647											
	4647	10185	PARKS MAINT SUPERVISOR	4500	A58E	74,027.20	88,836.80	103,646.40	35.59	42.71	49.83
	4647	10191	CITY ARBORIST	4500	A57E	67,308.80	80,766.40	94,224.00	32.36	38.83	45.30
	4647	10659	PARKS MAINTENANCE FOREMAN	4510	A55H	55,619.20	66,747.20	77,875.20	26.74	32.09	37.44
	4647	10660	PARKS MAINTENANCE FOREMAN	4510	A55H	55,619.20	66,747.20	77,875.20	26.74	32.09	37.44
	4647	10661	PARKS MAINTENANCE FOREMAN	4510	A55H	55,619.20	66,747.20	77,875.20	26.74	32.09	37.44
	4647	10662	PARKS MAINTENANCE FOREMAN	4510	A55H	55,619.20	66,747.20	77,875.20	26.74	32.09	37.44
	4647	10663	PARKS MAINTENANCE FOREMAN	4510	A55H	55,619.20	66,747.20	77,875.20	26.74	32.09	37.44
	4647	10542	HORTICULTURAL TECHNICIAN	5100	A51H	38,001.60	45,604.00	53,206.40	18.27	21.93	25.58
	4647	10581	HORTICULTURAL TECHNICIAN	5100	A51H	38,001.60	45,604.00	53,206.40	18.27	21.93	25.58
	4647	10193	IRRIGATION TECHNICIAN	5100	A51H	38,001.60	45,604.00	53,206.40	18.27	21.93	25.58
	4647	10194	IRRIGATION TECHNICIAN	5100	A51H	38,001.60	45,604.00	53,206.40	18.27	21.93	25.58
	4647	10462	PARK ATTENDANT III	5100	A51H	38,001.60	45,604.00	53,206.40	18.27	21.93	25.58
	4647	10192	SPRAY TECHNICIAN	5100	A51H	38,001.60	45,604.00	53,206.40	18.27	21.93	25.58
	4647	10575	SR ADMINISTRATIVE ASSISTANT - PARKS	5100	A51H	38,001.60	45,604.00	53,206.40	18.27	21.93	25.58
	4647	10195	PARKS MAINT WORKER III	5100	A50H	36,046.40	41,454.40	46,862.40	17.33	19.93	22.53
	4647	10196	PARKS MAINT WORKER III	5100	A50H	36,046.40	41,454.40	46,862.40	17.33	19.93	22.53
	4647	10197	PARKS MAINT WORKER III	5100	A50H	36,046.40	41,454.40	46,862.40	17.33	19.93	22.53
	4647	10198	PARKS MAINT WORKER III	5100	A50H	36,046.40	41,454.40	46,862.40	17.33	19.93	22.53
	4647	10199	PARKS MAINT WORKER III	5100	A50H	36,046.40	41,454.40	46,862.40	17.33	19.93	22.53
	4647	10200	PARKS MAINT WORKER II	5100	A49H	33,529.60	38,563.20	43,596.80	16.12	18.54	20.96
	4647	10201	PARKS MAINT WORKER II	5100	A49H	33,529.60	38,563.20	43,596.80	16.12	18.54	20.96
	4647	10202	PARKS MAINT WORKER II	5100	A49H	33,529.60	38,563.20	43,596.80	16.12	18.54	20.96
	4647	10203	PARKS MAINT WORKER II	5100	A49H	33,529.60	38,563.20	43,596.80	16.12	18.54	20.96
	4647	10204	PARKS MAINT WORKER II	5100	A49H	33,529.60	38,563.20	43,596.80	16.12	18.54	20.96
	4647	10206	PARKS MAINT WORKER I	5100	A48H	31,200.00	35,880.00	40,560.00	15.00	17.25	19.50
	4647	10207	PARKS MAINT WORKER I	5100	A48H	31,200.00	35,880.00	40,560.00	15.00	17.25	19.50
	4647	10208	PARKS MAINT WORKER I	5100	A48H	31,200.00	35,880.00	40,560.00	15.00	17.25	19.50
	4647	10209	PARKS MAINT WORKER I	5100	A48H	31,200.00	35,880.00	40,560.00	15.00	17.25	19.50
	4647	10210	PARKS MAINT WORKER I	5100	A48H	31,200.00	35,880.00	40,560.00	15.00	17.25	19.50
	4647	10211	PARKS MAINT WORKER I	5100	A48H	31,200.00	35,880.00	40,560.00	15.00	17.25	19.50
	4647	10212	PARKS MAINT WORKER I	5100	A48H	31,200.00	35,880.00	40,560.00	15.00	17.25	19.50
	4647	10213	PARKS MAINT WORKER I	5100	A48H	31,200.00	35,880.00	40,560.00	15.00	17.25	19.50
	4647	10214	PARKS MAINT WORKER I (PT 48 HR)	5200	P48H	18,720.00	21,528.00	24,336.00	15.00	17.25	19.50
	4647	10215	PARKS MAINT WORKER I (PT 48 HR)	5200	P48H	18,720.00	21,528.00	24,336.00	15.00	17.25	19.50
	4647	10216	PARKS MAINT WORKER I (PT 48 HR)	5200	P48H	18,720.00	21,528.00	24,336.00	15.00	17.25	19.50

27

City of Dunedin
FY 24 Pay Plan
Positions by Department

Location	Cost Center Split	Position #	Position Desc	Job Class	Grade	Annual Salary Range			Hourly Range		
						Min Pay	Mid Pay	Max Pay	Hrly Min	Hrly Mid	Hrly Max
DUNEDIN GOLF COURSE ADMIN - 4401											
4401	4401/4242	10527	GENERAL MANAGER OF GOLF OPERATIONS	3000	A60E	87,942.40	109,928.00	131,913.60	42.28	52.85	63.42
4401	4401/1506	10658	ACCOUNTANT/ FINANCIAL ANALYST	5000	A54E	50,564.80	60,673.60	70,782.40	24.31	29.17	34.03
4401		10667	ADMINISTRATIVE ASSISTANT - GOLF COURSE	5100	A50H	36,046.40	41,454.40	46,862.40	17.33	19.93	22.53
DUNEDIN GOLF COURSE PRO SHOP -4403											
4403		10668	HEAD GOLF PROFESSIONAL	4000	A56E	61,193.60	73,434.40	85,675.20	29.42	35.31	41.19
4403		10669	ASSISTANT GOLF PROFESSIONAL	4510	A53H	45,968.00	55,161.60	64,355.20	22.10	26.52	30.94
4403		10670	GOLF SHOP ATTENDANT	5100	A50H	36,046.40	41,454.40	46,862.40	17.33	19.93	22.53
4403		10671	CART/ RANGE ATTENDANT	5100	A48H	31,200.00	35,880.00	40,560.00	15.00	17.25	19.50
4403		10672	CART/ RANGE ATTENDANT	5100	A48H	31,200.00	35,880.00	40,560.00	15.00	17.25	19.50
4403		10673	CART/ RANGE ATTENDANT (PT 40 HR)	5200	P48H	15,600.00	17,940.00	20,280.00	15.00	17.25	19.50
MARINA - 4900											
4900		10218	HARBORMASTER	4500	A57E	67,308.80	80,766.40	94,224.00	32.36	38.83	45.30
4900		10219	MARINE MAINT TECHNICIAN	5100	A51H	38,001.60	45,604.00	53,206.40	18.27	21.93	25.58
UTILITIES & ENGINEERING											
ENGINEERING DIVISION											
ENGINEERING - 5035											
5035	5035/5101/5201	10518	DIR OF UTILITIES & ENGINEERING	3000	A62E	111,300.80	139,131.20	166,961.60	53.51	66.89	80.27
5035		10536	ASSIST DIR OF UTILITIES/ CITY ENGINEER	4000	A61E	98,945.60	123,687.20	148,428.80	47.57	59.47	71.36
5035		10555	ENGINEER III	4500	A60E	87,942.40	109,928.00	131,913.60	42.28	52.85	63.42
5035		10556	ENGINEER II	4500	A58E	74,027.20	88,836.80	103,646.40	35.59	42.71	49.83
5035	5035/1701	10226	CAD/GIS SYSTEMS ADMINISTRATOR	5000	A57E	67,308.80	80,766.40	94,224.00	32.36	38.83	45.30
5035		10557	ENGINEER I	4500	A56E	61,193.60	73,434.40	85,675.20	29.42	35.31	41.19
5035		10539	ENGINEERING CONTRACTS MANAGER	4500	A56E	61,193.60	73,434.40	85,675.20	29.42	35.31	41.19
5035		10558	ENGINEERING PROJECT MANAGER	4500	A56E	61,193.60	73,434.40	85,675.20	29.42	35.31	41.19
5035		10559	PLANS REVIEWER	5000	A55E	55,619.20	66,747.20	77,875.20	26.74	32.09	37.44
5035		10561	ENGINEERING INSPECTOR	5100	A54H	50,584.80	60,673.60	70,782.40	24.31	29.17	34.03
5035		10562	ENGINEERING INSPECTOR	5100	A54H	50,584.80	60,673.60	70,782.40	24.31	29.17	34.03
5035		10227	SR ENGINEERING DESIGNER	5000	A54E	50,584.80	60,673.60	70,782.40	24.31	29.17	34.03
5035		10560	ENGINEERING DESIGNER	5100	A53H	45,968.00	55,161.60	64,355.20	22.10	26.52	30.94
5035		10524	ADMINISTRATIVE ASSISTANT - ENG	5100	A50H	36,046.40	41,454.40	46,862.40	17.33	19.93	22.53
WATER & UTILITY BILLING DIVISION											
WATER ADMINISTRATION - 5101											
5101		10234	HYDROGEOLOGIST	5000	A57E	67,308.80	80,766.40	94,224.00	32.36	38.83	45.30
5101		10235	UTILITY DATA CONTROL COORDINATOR	5100	A52H	41,787.20	50,148.80	58,510.40	20.09	24.11	28.13
5101		10460	SR ADMINISTRATIVE ASSISTANT - WATER	5100	A51H	38,001.60	45,604.00	53,206.40	18.27	21.93	25.58
WATER PRODUCTION - 5165											
5165		10576	WATER PLANT MANAGER	4000	A58E	74,027.20	88,836.80	103,646.40	35.59	42.71	49.83
5165		10238	LEAD WATER PLANT OPERATOR	6000	A55H	55,619.20	66,747.20	77,875.20	26.74	32.09	37.44
5165		10240	LEAD WATER PLANT OPERATOR	6000	A55H	55,619.20	66,747.20	77,875.20	26.74	32.09	37.44
5165		10248	WATER MAINT MECHANIC	6300	A53H	45,968.00	55,161.60	64,355.20	22.10	26.52	30.94
5165		10653	WATER MAINT MECHANIC	6300	A53H	45,968.00	55,161.60	64,355.20	22.10	26.52	30.94
5165		10241	WATER PLANT OPERATOR	6100	A53H	45,968.00	55,161.60	64,355.20	22.10	26.52	30.94
5165		10242	WATER PLANT OPERATOR	6100	A53H	45,968.00	55,161.60	64,355.20	22.10	26.52	30.94
5165		10243	WATER PLANT OPERATOR	6100	A53H	45,968.00	55,161.60	64,355.20	22.10	26.52	30.94
5165		10244	WATER PLANT OPERATOR	6100	A53H	45,968.00	55,161.60	64,355.20	22.10	26.52	30.94
5165		10245	WATER PLANT OPERATOR	6100	A53H	45,968.00	55,161.60	64,355.20	22.10	26.52	30.94
5165		10246	WATER PLANT OPERATOR	6100	A53H	45,968.00	55,161.60	64,355.20	22.10	26.52	30.94
5165		10247	WATER PLANT OPERATOR	6100	A53H	45,968.00	55,161.60	64,355.20	22.10	26.52	30.94
5165		10541	WATER PLANT OPERATOR TRAINEE	6200	A51H	38,001.60	45,604.00	53,206.40	18.27	21.93	25.58

28

City of Dunedin
 FY 24 Pay Plan
 Positions by Department

Location	Cost Center Split	Position #	Position Desc	Job Class	Grade	Annual Salary Range			Hourly Range		
						Min Pay	Mid Pay	Max Pay	Hrly Min	Hrly Mid	Hrly Max
WATER DISTRIBUTION - 5166											
5166		10577	WATER DISTRIBUTION MANAGER	4000	A57E	67,308.80	80,766.40	94,224.00	32.36	38.83	45.30
5166		10250	WATER DISTRIBUTION FOREMAN	4510	A55H	55,619.20	66,747.20	77,875.20	26.74	32.09	37.44
5166		10657	WATER DISTRIBUTION FOREMAN	4510	A55H	55,619.20	66,747.20	77,875.20	26.74	32.09	37.44
5166		10251	SR WATER DISTRIBUTION TECH	5100	A54H	50,564.80	60,673.60	70,782.40	24.31	29.17	34.03
5166		10253	SR WATER DISTRIBUTION TECH	5100	A54H	50,564.80	60,673.60	70,782.40	24.31	29.17	34.03
5166		10254	WATER DISTRIBUTION TECH	5100	A52H	41,787.20	50,148.80	58,510.40	20.09	24.11	28.13
5166		10259	WATER DISTRIBUTION TECH	5100	A52H	41,787.20	50,148.80	58,510.40	20.09	24.11	28.13
5166		10442	SR WATER SERVICE WORKER	5100	A50H	36,046.40	41,454.40	46,862.40	17.33	19.93	22.53
5166		10263	FIELD SERVICE REPRESENTATIVE	5100	A49H	33,529.60	38,563.20	43,596.80	16.12	18.54	20.96
5166		10260	WATER SERVICE WORKER	5100	A49H	33,529.60	38,563.20	43,596.80	16.12	18.54	20.96
5166		10261	WATER SERVICE WORKER	5100	A49H	33,529.60	38,563.20	43,596.80	16.12	18.54	20.96
5166		10262	WATER SERVICE WORKER	5100	A49H	33,529.60	38,563.20	43,596.80	16.12	18.54	20.96
5166		10533	WATER SERVICE WORKER	5100	A49H	33,529.60	38,563.20	43,596.80	16.12	18.54	20.96
5166		10534	WATER SERVICE WORKER	5100	A49H	33,529.60	38,563.20	43,596.80	16.12	18.54	20.96
5166		10535	WATER SERVICE WORKER	5100	A49H	33,529.60	38,563.20	43,596.80	16.12	18.54	20.96
UTILITY BILLING - 1503											
1503		10017	UTILITY BILLING SUPERVISOR	4500	A56E	61,193.60	73,434.40	85,675.20	29.42	35.31	41.19
1503		10018	UTILITY BILLING TECHNICIAN	5100	A50H	36,046.40	41,454.40	46,862.40	17.33	19.93	22.53
1503		10019	UTILITY BILLING TECHNICIAN	5100	A50H	36,046.40	41,454.40	46,862.40	17.33	19.93	22.53
1503		10020	UTILITY BILLING TECHNICIAN	5100	A50H	36,046.40	41,454.40	46,862.40	17.33	19.93	22.53
1503		10021	UTILITY BILLING TECHNICIAN	5100	A50H	36,046.40	41,454.40	46,862.40	17.33	19.93	22.53
1503		10022	UTILITY BILLING TECHNICIAN	5100	A50H	36,046.40	41,454.40	46,862.40	17.33	19.93	22.53
WASTEWATER DIVISION											
WASTEWATER ADMINISTRATION - 5201											
5201		10578	ADMINISTRATIVE COORDINATOR - WW	5100	A52H	41,787.20	50,148.80	58,510.40	20.09	24.11	28.13
WASTEWATER PLANT - 5265											
5265		10579	WW PLANT MANAGER	4000	A58E	74,027.20	88,836.80	103,646.40	35.59	42.71	49.83
5265		10266	LEAD WW PLANT OPERATOR	4510	A55H	55,619.20	66,747.20	77,875.20	26.74	32.09	37.44
5265		10267	LEAD WW PLANT OPERATOR	4510	A55H	55,619.20	66,747.20	77,875.20	26.74	32.09	37.44
5265		10268	LEAD WW PLANT OPERATOR	4510	A55H	55,619.20	66,747.20	77,875.20	26.74	32.09	37.44
5265		10280	WW MAINT MECHANIC	5100	A53H	45,968.00	55,161.60	64,355.20	22.10	26.52	30.94
5265		10281	WW MAINT MECHANIC	5100	A53H	45,968.00	55,161.60	64,355.20	22.10	26.52	30.94
5265		10282	WW MAINT MECHANIC	5100	A53H	45,968.00	55,161.60	64,355.20	22.10	26.52	30.94
5265		10283	WW MAINT MECHANIC	5100	A53H	45,968.00	55,161.60	64,355.20	22.10	26.52	30.94
5265		10270	WW PLANT OPERATOR	5100	A53H	45,968.00	55,161.60	64,355.20	22.10	26.52	30.94
5265		10271	WW PLANT OPERATOR	5100	A53H	45,968.00	55,161.60	64,355.20	22.10	26.52	30.94
5265		10273	WW PLANT OPERATOR	5100	A53H	45,968.00	55,161.60	64,355.20	22.10	26.52	30.94
5265		10274	WW PLANT OPERATOR	5100	A53H	45,968.00	55,161.60	64,355.20	22.10	26.52	30.94
5265		10276	WW PLANT OPERATOR	5100	A53H	45,968.00	55,161.60	64,355.20	22.10	26.52	30.94
5265		10277	WW PLANT OPERATOR	5100	A53H	45,968.00	55,161.60	64,355.20	22.10	26.52	30.94
5265		10445	WW PLANT OPERATOR	5100	A53H	45,968.00	55,161.60	64,355.20	22.10	26.52	30.94
5265		10446	WW PLANT OPERATOR	5100	A53H	45,968.00	55,161.60	64,355.20	22.10	26.52	30.94
5265		10269	WW PLANT OPERATOR TRAINEE	5100	A51H	38,001.60	45,604.00	53,206.40	18.27	21.93	25.58
5265		10529	WW PLANT OPERATOR TRAINEE	5100	A51H	38,001.60	45,604.00	53,206.40	18.27	21.93	25.58
WASTEWATER COLLECTIONS - 5266											
5266		10580	WW COLLECTION MANAGER	4000	A57E	67,308.80	80,766.40	94,224.00	32.36	38.83	45.30
5266		10286	WW COLLECTION FOREMAN	4510	A55H	55,619.20	66,747.20	77,875.20	26.74	32.09	37.44
5266		10447	SR WW COLLECTION TECH	5100	A54H	50,564.80	60,673.60	70,782.40	24.31	29.17	34.03
5266		10279	TV & SEAL TRUCK OPERATOR	5100	A54H	50,564.80	60,673.60	70,782.40	24.31	29.17	34.03
5266		10284	WW MAINT MECHANIC	5100	A53H	45,968.00	55,161.60	64,355.20	22.10	26.52	30.94
5266		10481	WW MAINT MECHANIC	5100	A53H	45,968.00	55,161.60	64,355.20	22.10	26.52	30.94
5266		10583	TECHNICAL SUPPORT COORDINATOR - WW	5100	A52H	41,787.20	50,148.80	58,510.40	20.09	24.11	28.13

29

City of Dunedin
FY 24 Pay Plan
Positions by Department

Location	Cost Center Split	Position #	Position Desc	Job Class	Grade	Annual Salary Range			Hourly Range		
						Min Pay	Mid Pay	Max Pay	Hrly Min	Hrly Mid	Hrly Max
5266		10290	WW COLLECTION TECHNICIAN	5100	A52H	41,787.20	50,148.80	58,510.40	20.09	24.11	28.13
5266		10448	WW COLLECTION TECHNICIAN	5100	A52H	41,787.20	50,148.80	58,510.40	20.09	24.11	28.13
5266		10292	SR WW SERVICE WORKER	5100	A50H	36,046.40	41,454.40	46,862.40	17.33	19.93	22.53
5266		10449	SR WW SERVICE WORKER	5100	A50H	36,046.40	41,454.40	46,862.40	17.33	19.93	22.53
5266		10450	SR WW SERVICE WORKER	5100	A50H	36,046.40	41,454.40	46,862.40	17.33	19.93	22.53
5266		10293	WW SERVICE WORKER	5100	A49H	33,529.60	38,563.20	43,596.80	16.12	18.54	20.96
5266		10294	WW SERVICE WORKER	5100	A49H	33,529.60	38,563.20	43,596.80	16.12	18.54	20.96
5266		10295	WW SERVICE WORKER	5100	A49H	33,529.60	38,563.20	43,596.80	16.12	18.54	20.96
5266		10296	WW SERVICE WORKER	5100	A49H	33,529.60	38,563.20	43,596.80	16.12	18.54	20.96

PUBLIC WORKS

SANITATION & RECYCLING DIVISION

SANITATION & RECYCLING ADMINISTRATION - 540

5401	5401/5300/6200/6300/6447	10519	DIR OF PUBLIC WORKS	3000	A62E	111,300.80	139,131.20	166,961.60	53.51	66.89	80.27
5401		10598	SANITATION & RECYCLING SUPERINTENDENT	4000	A60E	87,942.40	109,928.00	131,913.60	42.28	52.85	63.42
5401		10599	SANITATION MANAGER	4500	A56E	61,193.60	73,434.40	85,675.20	29.42	35.31	41.19
5401		10600	SANITATION FOREMAN	4510	A55H	55,619.20	66,747.20	77,875.20	26.74	32.09	37.44
5401		10602	LEAD SANITATION ASSOCIATE	5100	A53H	45,968.00	55,161.60	64,355.20	22.10	26.52	30.94
5401		10666	ENVIRONMENTAL SPECIALIST I PW - SOLID WASTE	5000	A53E	45,968.00	55,161.60	64,355.20	22.10	26.52	30.94
5401		10318	SR ADMINISTRATIVE ASSISTANT - SOLID WASTE	5100	A51H	38,001.60	45,604.00	53,206.40	18.27	21.93	25.58

SANITATION & RECYCLING RESIDENTIAL - 5430

5430		10603	SANITATION ASSOCIATE III - 5430	5100	A52H	41,787.20	50,148.80	58,510.40	20.09	24.11	28.13
5430		10604	SANITATION ASSOCIATE II - 5430	5100	A51H	38,001.60	45,604.00	53,206.40	18.27	21.93	25.58
5430		10605	SANITATION ASSOCIATE II - 5430	5100	A51H	38,001.60	45,604.00	53,206.40	18.27	21.93	25.58
5430		10606	SANITATION ASSOCIATE II - 5430	5100	A51H	38,001.60	45,604.00	53,206.40	18.27	21.93	25.58
5430		10607	SANITATION ASSOCIATE II - 5430	5100	A51H	38,001.60	45,604.00	53,206.40	18.27	21.93	25.58
5430		10608	SANITATION ASSOCIATE II - 5430	5100	A51H	38,001.60	45,604.00	53,206.40	18.27	21.93	25.58
5430		10609	SANITATION ASSOCIATE II - 5430	5100	A51H	38,001.60	45,604.00	53,206.40	18.27	21.93	25.58
5430		10610	SANITATION ASSOCIATE I - 5430	5100	A50H	36,046.40	41,454.40	46,862.40	17.33	19.93	22.53
5430		10611	SANITATION ASSOCIATE I - 5430	5100	A50H	36,046.40	41,454.40	46,862.40	17.33	19.93	22.53
5430		10612	SANITATION ASSOCIATE I - 5430	5100	A50H	36,046.40	41,454.40	46,862.40	17.33	19.93	22.53

SANITATION & RECYCLING COMMERCIAL - 5431

5431		10613	SANITATION ASSOCIATE III - 5431	5100	A52H	41,787.20	50,148.80	58,510.40	20.09	24.11	28.13
5431		10614	SANITATION ASSOCIATE III - 5431	5100	A52H	41,787.20	50,148.80	58,510.40	20.09	24.11	28.13
5431		10615	SANITATION ASSOCIATE II - 5431	5100	A51H	38,001.60	45,604.00	53,206.40	18.27	21.93	25.58
5431		10616	SANITATION ASSOCIATE I - 5431	5100	A50H	36,046.40	41,454.40	46,862.40	17.33	19.93	22.53
5431		10617	SANITATION ASSOCIATE I - 5431	5100	A50H	36,046.40	41,454.40	46,862.40	17.33	19.93	22.53

FLEET SERVICES DIVISION

FLEET SERVICES - 6200

6200		10618	FLEET SERVICES MANAGER	4000	A59E	81,432.00	97,718.40	114,004.80	39.15	46.98	54.81
6200		10619	FLEET FOREMAN	6400	A57H	67,308.80	80,766.40	94,224.00	32.36	38.83	45.30
6200		10335	LEAD MECHANIC	6500	A55H	55,619.20	66,747.20	77,875.20	26.74	32.09	37.44
6200		10337	MECHANIC	6600	A52H	41,787.20	50,148.80	58,510.40	20.09	24.11	28.13
6200		10338	MECHANIC	6600	A52H	41,787.20	50,148.80	58,510.40	20.09	24.11	28.13
6200		10339	MECHANIC	6600	A52H	41,787.20	50,148.80	58,510.40	20.09	24.11	28.13
6200		10340	MECHANIC	6600	A52H	41,787.20	50,148.80	58,510.40	20.09	24.11	28.13
6200		10528	MECHANIC	6600	A52H	41,787.20	50,148.80	58,510.40	20.09	24.11	28.13
6200		10494	FLEET ADMINISTRATIVE TECHNICIAN	5100	A52H	41,787.20	50,148.80	58,510.40	20.09	24.11	28.13

City of Dunedin
FY 24 Pay Plan
Positions by Department

Location	Cost Center Split	Position #	Position Desc	Job Class	Grade	Annual Salary Range			Hourly Range		
						Min Pay	Mid Pay	Max Pay	Hrly Min	Hrly Mid	Hrly Max
PUBLIC SERVICES DIVISION											
STORMWATER - 5300											
5300		10585	PUBLIC SERVICES MANAGER	4000	A58E	74,027.20	88,836.80	103,848.40	35.59	42.71	49.83
5300		10586	ENVIRONMENTAL PROGRAM MANAGER	4500	A56E	61,193.60	73,434.40	85,675.20	29.42	35.31	41.19
5300		10676	BUSINESS ANALYST	5000	A54E	50,564.80	60,673.60	70,782.40	24.31	29.17	34.03
5300		10301	PUBLIC SERVICES FOREMAN	4510	A54H	50,564.80	60,673.60	70,782.40	24.31	29.17	34.03
5300		10665	ENVIRONMENTAL SPECIALIST I PW - STORMWATER	5000	A53E	45,968.00	55,161.60	64,355.20	22.10	26.52	30.94
5300		10587	PUBLIC SERVICES CREW CHIEF - 5300	5100	A53H	45,968.00	55,161.60	64,355.20	22.10	26.52	30.94
5300		10588	PUBLIC SERVICES CREW CHIEF - 5300	5100	A53H	45,988.00	55,161.60	64,355.20	22.10	26.52	30.94
5300		10589	PUBLIC SERVICES MAINT ASSOC III - 5300	5100	A50H	36,046.40	41,454.40	46,862.40	17.33	19.93	22.53
5300		10590	PUBLIC SERVICES MAINT ASSOC II - 5300	5100	A49H	33,529.60	38,563.20	43,596.80	16.12	18.54	20.96
5300		10591	PUBLIC SERVICES MAINT ASSOC II - 5300	5100	A49H	33,529.60	38,563.20	43,596.80	18.12	18.54	20.96
5300		10592	PUBLIC SERVICES MAIN ASSOC I - 5300	5100	A48H	31,200.00	35,880.00	40,560.00	15.00	17.25	19.50
5300		10593	PUBLIC SERVICES MAIN ASSOC I - 5300	5100	A48H	31,200.00	35,880.00	40,560.00	15.00	17.25	19.50
5300		10594	PUBLIC SERVICES MAIN ASSOC I - 5300	5100	A48H	31,200.00	35,880.00	40,560.00	15.00	17.25	19.50
5300		10595	PUBLIC SERVICES MAIN ASSOC I - 5300	5100	A48H	31,200.00	35,880.00	40,560.00	15.00	17.25	19.50
5300		10596	PUBLIC SERVICES MAIN ASSOC I - 5300	5100	A48H	31,200.00	35,880.00	40,560.00	15.00	17.25	19.50
5300		10597	PUBLIC SERVICES MAIN ASSOC I - 5300	5100	A48H	31,200.00	35,880.00	40,560.00	15.00	17.25	19.50
STREETS - 6300											
6300		10620	PUBLIC SERVICES CREW CHIEF - 6300	5100	A53H	45,968.00	55,161.60	64,355.20	22.10	26.52	30.94
6300		10621	PUBLIC SERVICES CREW CHIEF - 6300	5100	A53H	45,968.00	55,161.60	64,355.20	22.10	26.52	30.94
6300		10622	PUBLIC SERVICES MAINT ASSOC III - 6300	5100	A50H	36,046.40	41,454.40	46,862.40	17.33	19.93	22.53
6300		10623	PUBLIC SERVICES MAINT ASSOC II - 6300	5100	A49H	33,529.60	38,563.20	43,596.80	16.12	18.54	20.96
6300		10624	PUBLIC SERVICES MAINT ASSOC II - 6300	5100	A49H	33,529.60	38,563.20	43,596.80	16.12	18.54	20.96
6300		10625	PUBLIC SERVICES MAINT ASSOC II - 6300	5100	A49H	33,529.60	38,563.20	43,596.80	16.12	18.54	20.96
6300		10626	PUBLIC SERVICES MAINT ASSOC I - 6300	5100	A48H	31,200.00	35,880.00	40,560.00	15.00	17.25	19.50
6300		10627	PUBLIC SERVICES MAINT ASSOC I - 6300	5100	A48H	31,200.00	35,880.00	40,560.00	15.00	17.25	19.50
6300		10628	PUBLIC SERVICES MAINT ASSOC I - 6300	5100	A48H	31,200.00	35,880.00	40,560.00	15.00	17.25	19.50
FACILITIES DIVISION											
FACILITIES - 6447											
6447	6447/5300/6300	10584	ASSIST DIR OF PUBLIC WORKS	4000	A61E	98,945.60	123,687.20	148,428.80	47.57	59.47	71.36
6447		10629	FACILITIES MANAGER	4500	A58E	74,027.20	88,836.80	103,848.40	35.59	42.71	49.83
6447		10630	FACILITIES FOREMAN	4510	A56H	61,193.60	73,434.40	85,675.20	29.42	35.31	41.19
6447		10355	LEAD CRAFTSWORKER	4510	A54H	50,564.80	60,673.60	70,782.40	24.31	29.17	34.03
6447		10356	LEAD CRAFTSWORKER	4510	A54H	50,564.80	60,673.60	70,782.40	24.31	29.17	34.03
6447		10674	LEAD CRAFTSWORKER	4510	A54H	50,564.80	60,673.60	70,782.40	24.31	29.17	34.03
6447	6447/5300/6300	10363	ADMINISTRATIVE COORDINATOR - PUB SERVICES	5100	A52H	41,787.20	50,148.80	58,510.40	20.09	24.11	28.13
6447		10357	CRAFTSWORKER III - HVAC	5100	A52H	41,787.20	50,148.80	58,510.40	20.09	24.11	28.13
6447		10364	CUSTODIAL SERVICES COORDINATOR	5100	A52H	41,787.20	50,148.80	58,510.40	20.09	24.11	28.13
6447		10358	CRAFTSWORKER II	5100	A51H	38,001.60	45,604.00	53,206.40	18.27	21.93	25.58
6447		10359	CRAFTSWORKER II	5100	A51H	38,001.60	45,604.00	53,206.40	18.27	21.93	25.58
6447		10360	CRAFTSWORKER II	5100	A51H	38,001.60	45,604.00	53,206.40	18.27	21.93	25.58
6447		10675	CRAFTSWORKER II	5100	A51H	38,001.60	45,604.00	53,206.40	18.27	21.93	25.58
6447		10361	CRAFTSWORKER I	5100	A50H	36,046.40	41,454.40	46,862.40	17.33	19.93	22.53
6447		10362	CRAFTSWORKER I	5100	A50H	36,046.40	41,454.40	46,862.40	17.33	19.93	22.53

31

City of Dunedin
 FY 24 Pay Plan
 Positions by Grade

Position Desc	Position #	Job Class	Exempt/Non	Grade	Annual Salary Range			Hourly Range		
					Min Pay	Mid Pay	Max Pay	Hrly Min	Hrly Mid	Hrly Max
CART/ RANGE ATTENDANT	10671	5100	N	A48H	31,200.00	35,880.00	40,560.00	15.00	17.25	19.50
CART/ RANGE ATTENDANT	10672	5100	N	A48H	31,200.00	35,880.00	40,560.00	15.00	17.25	19.50
CART/ RANGE ATTENDANT (PT 40 HR)	10673	5200	N	P48H	15,600.00	17,940.00	20,280.00	15.00	17.25	19.50
LIBRARY AIDE (PT 40 HR)	10152	5200	N	P48H	15,600.00	17,940.00	20,280.00	15.00	17.25	19.50
LIBRARY AIDE (PT 40 HR)	10153	5200	N	P48H	15,600.00	17,940.00	20,280.00	15.00	17.25	19.50
PARK ATTENDANT (PT 40 HR)	10636	5200	N	P48H	15,600.00	17,940.00	20,280.00	15.00	17.25	19.50
PARK ATTENDANT (PT 40 HR)	10637	5200	N	P48H	15,600.00	17,940.00	20,280.00	15.00	17.25	19.50
PARK ATTENDANT (PT 40 HR)	10638	5200	N	P48H	15,600.00	17,940.00	20,280.00	15.00	17.25	19.50
PARK ATTENDANT (PT 40 HR)	10639	5200	N	P48H	15,600.00	17,940.00	20,280.00	15.00	17.25	19.50
PARK ATTENDANT (PT 40 HR)	10640	5200	N	P48H	15,600.00	17,940.00	20,280.00	15.00	17.25	19.50
PARK ATTENDANT (PT 50 HR)	10631	5200	N	P48H	19,500.00	22,425.00	25,350.00	15.00	17.25	19.50
PARK ATTENDANT (PT 50 HR)	10632	5200	N	P48H	19,500.00	22,425.00	25,350.00	15.00	17.25	19.50
PARK ATTENDANT (PT 50 HR)	10633	5200	N	P48H	19,500.00	22,425.00	25,350.00	15.00	17.25	19.50
PARK ATTENDANT (PT 50 HR)	10634	5200	N	P48H	19,500.00	22,425.00	25,350.00	15.00	17.25	19.50
PARK ATTENDANT (PT 50 HR)	10635	5200	N	P48H	19,500.00	22,425.00	25,350.00	15.00	17.25	19.50
PARKS MAINT WORKER I	10206	5100	N	A48H	31,200.00	35,880.00	40,560.00	15.00	17.25	19.50
PARKS MAINT WORKER I	10207	5100	N	A48H	31,200.00	35,880.00	40,560.00	15.00	17.25	19.50
PARKS MAINT WORKER I	10208	5100	N	A48H	31,200.00	35,880.00	40,560.00	15.00	17.25	19.50
PARKS MAINT WORKER I	10209	5100	N	A48H	31,200.00	35,880.00	40,560.00	15.00	17.25	19.50
PARKS MAINT WORKER I	10210	5100	N	A48H	31,200.00	35,880.00	40,560.00	15.00	17.25	19.50
PARKS MAINT WORKER I	10211	5100	N	A48H	31,200.00	35,880.00	40,560.00	15.00	17.25	19.50
PARKS MAINT WORKER I	10212	5100	N	A48H	31,200.00	35,880.00	40,560.00	15.00	17.25	19.50
PARKS MAINT WORKER I	10213	5100	N	A48H	31,200.00	35,880.00	40,560.00	15.00	17.25	19.50
PARKS MAINT WORKER I (PT 48 HR)	10214	5200	N	P48H	18,720.00	21,528.00	24,336.00	15.00	17.25	19.50
PARKS MAINT WORKER I (PT 48 HR)	10215	5200	N	P48H	18,720.00	21,528.00	24,336.00	15.00	17.25	19.50
PARKS MAINT WORKER I (PT 48 HR)	10216	5200	N	P48H	18,720.00	21,528.00	24,336.00	15.00	17.25	19.50
PUBLIC SERVICES MAIN ASSOC I - 5300	10592	5100	N	A48H	31,200.00	35,880.00	40,560.00	15.00	17.25	19.50
PUBLIC SERVICES MAIN ASSOC I - 5300	10593	5100	N	A48H	31,200.00	35,880.00	40,560.00	15.00	17.25	19.50
PUBLIC SERVICES MAIN ASSOC I - 5300	10594	5100	N	A48H	31,200.00	35,880.00	40,560.00	15.00	17.25	19.50
PUBLIC SERVICES MAIN ASSOC I - 5300	10595	5100	N	A48H	31,200.00	35,880.00	40,560.00	15.00	17.25	19.50
PUBLIC SERVICES MAIN ASSOC I - 5300	10596	5100	N	A48H	31,200.00	35,880.00	40,560.00	15.00	17.25	19.50
PUBLIC SERVICES MAIN ASSOC I - 5300	10597	5100	N	A48H	31,200.00	35,880.00	40,560.00	15.00	17.25	19.50
PUBLIC SERVICES MAINT ASSOC I - 6300	10626	5100	N	A48H	31,200.00	35,880.00	40,560.00	15.00	17.25	19.50
PUBLIC SERVICES MAINT ASSOC I - 6300	10627	5100	N	A48H	31,200.00	35,880.00	40,560.00	15.00	17.25	19.50
PUBLIC SERVICES MAINT ASSOC I - 6300	10628	5100	N	A48H	31,200.00	35,880.00	40,560.00	15.00	17.25	19.50
RECREATION LEADER I - 4250 (PT 50 HR)	10648	5200	N	P48H	19,500.00	22,425.00	25,350.00	15.00	17.25	19.50
RECREATION LEADER I - 4253 (PT 40 HR)	10641	5200	N	P48H	15,600.00	17,940.00	20,280.00	15.00	17.25	19.50
RECREATION LEADER I - 4253 (PT 40 HR)	10642	5200	N	P48H	15,600.00	17,940.00	20,280.00	15.00	17.25	19.50
RECREATION LEADER I - 4260 (PT 40 HR)	10643	5200	N	P48H	15,600.00	17,940.00	20,280.00	15.00	17.25	19.50
RECREATION LEADER I - 4260 (PT 40 HR)	10644	5200	N	P48H	15,600.00	17,940.00	20,280.00	15.00	17.25	19.50
RECREATION LEADER I - 4260 (PT 40 HR)	10645	5200	N	P48H	15,600.00	17,940.00	20,280.00	15.00	17.25	19.50
RECREATION LEADER I - 4260 (PT 40 HR)	10646	5200	N	P48H	15,600.00	17,940.00	20,280.00	15.00	17.25	19.50
RECREATION LEADER I - 4260 (PT 50 HR)	10647	5200	N	P48H	19,500.00	22,425.00	25,350.00	15.00	17.25	19.50
RECREATION LEADER I - 4260 (PT 50 HR)	10650	5200	N	P48H	19,500.00	22,425.00	25,350.00	15.00	17.25	19.50
FIELD SERVICE REPRESENTATIVE	10263	5100	N	A49H	33,529.60	38,563.20	43,596.80	16.12	18.54	20.96
LIBRARY ASSISTANT	10146	5100	N	A49H	33,529.60	38,563.20	43,596.80	16.12	18.54	20.96
LIBRARY ASSISTANT	10147	5100	N	A49H	33,529.60	38,563.20	43,596.80	16.12	18.54	20.96
LIBRARY ASSISTANT	10150	5100	N	A49H	33,529.60	38,563.20	43,596.80	16.12	18.54	20.96
LIBRARY ASSISTANT	10151	5100	N	A49H	33,529.60	38,563.20	43,596.80	16.12	18.54	20.96
LIBRARY ASSISTANT (PT 40 HR)	10463	5200	N	P49H	16,764.80	19,281.60	21,798.40	16.12	18.54	20.96
LIBRARY ASSISTANT (PT 40 HR)	10464	5200	N	P49H	16,764.80	19,281.60	21,798.40	16.12	18.54	20.96
PARKS MAINT WORKER II	10200	5100	N	A49H	33,529.60	38,563.20	43,596.80	16.12	18.54	20.96

32

City of Dunedin
 FY 24 Pay Plan
 Positions by Grade

Position Desc	Position #	Job Class	Exempt/Non	Grade	Annual Salary Range			Hourly Range		
					Min Pay	Mid Pay	Max Pay	Hrly Min	Hrly Mid	Hrly Max
PARKS MAINT WORKER II	10201	5100	N	A49H	33,529.60	38,563.20	43,596.80	16.12	18.54	20.96
PARKS MAINT WORKER II	10202	5100	N	A49H	33,529.60	38,563.20	43,596.80	16.12	18.54	20.96
PARKS MAINT WORKER II	10203	5100	N	A49H	33,529.60	38,563.20	43,596.80	16.12	18.54	20.96
PARKS MAINT WORKER II	10204	5100	N	A49H	33,529.60	38,563.20	43,596.80	16.12	18.54	20.96
PUBLIC SERVICES MAINT ASSOC II - 5300	10590	5100	N	A49H	33,529.60	38,563.20	43,596.80	16.12	18.54	20.96
PUBLIC SERVICES MAINT ASSOC II - 5300	10591	5100	N	A49H	33,529.60	38,563.20	43,596.80	16.12	18.54	20.96
PUBLIC SERVICES MAINT ASSOC II - 6300	10623	5100	N	A49H	33,529.60	38,563.20	43,596.80	16.12	18.54	20.96
PUBLIC SERVICES MAINT ASSOC II - 6300	10624	5100	N	A49H	33,529.60	38,563.20	43,596.80	16.12	18.54	20.96
PUBLIC SERVICES MAINT ASSOC II - 6300	10625	5100	N	A49H	33,529.60	38,563.20	43,596.80	16.12	18.54	20.96
RECREATION LEADER I SMIC - 4260 (PT 40HR)	10654	5200	N	P49H	16,764.80	19,281.60	21,798.40	16.12	18.54	20.96
SENIOR LIFEGUARD (PT 50 HR)	10656	5200	N	P49H	19,500.00	22,425.00	25,350.00	15.00	17.25	19.50
WATER SERVICE WORKER	10260	5100	N	A49H	33,529.60	38,563.20	43,596.80	16.12	18.54	20.96
WATER SERVICE WORKER	10261	5100	N	A49H	33,529.60	38,563.20	43,596.80	16.12	18.54	20.96
WATER SERVICE WORKER	10262	5100	N	A49H	33,529.60	38,563.20	43,596.80	16.12	18.54	20.96
WATER SERVICE WORKER	10533	5100	N	A49H	33,529.60	38,563.20	43,596.80	16.12	18.54	20.96
WATER SERVICE WORKER	10534	5100	N	A49H	33,529.60	38,563.20	43,596.80	16.12	18.54	20.96
WATER SERVICE WORKER	10535	5100	N	A49H	33,529.60	38,563.20	43,596.80	16.12	18.54	20.96
WW SERVICE WORKER	10293	5100	N	A49H	33,529.60	38,563.20	43,596.80	16.12	18.54	20.96
WW SERVICE WORKER	10294	5100	N	A49H	33,529.60	38,563.20	43,596.80	16.12	18.54	20.96
WW SERVICE WORKER	10295	5100	N	A49H	33,529.60	38,563.20	43,596.80	16.12	18.54	20.96
WW SERVICE WORKER	10296	5100	N	A49H	33,529.60	38,563.20	43,596.80	16.12	18.54	20.96
ADMINISTRATIVE ASSISTANT - HR	10525	5100	N	A50H	36,046.40	41,454.40	46,862.40	17.33	19.93	22.53
ADMINISTRATIVE ASSISTANT - COMMUNITY DEV	10655	5100	N	A50H	36,046.40	41,454.40	46,862.40	17.33	19.93	22.53
ADMINISTRATIVE ASSISTANT - ENG	10524	5100	N	A50H	36,046.40	41,454.40	46,862.40	17.33	19.93	22.53
ADMINISTRATIVE ASSISTANT - GOLF COURSE	10667	5100	N	A50H	36,046.40	41,454.40	46,862.40	17.33	19.93	22.53
CRAFTSWORKER I	10361	5100	N	A50H	36,046.40	41,454.40	46,862.40	17.33	19.93	22.53
CRAFTSWORKER I	10362	5100	N	A50H	36,046.40	41,454.40	46,862.40	17.33	19.93	22.53
Golf Shop Attendant	10670	5100	N	A50H	36,046.40	41,454.40	46,862.40	17.33	19.93	22.53
PARKS MAINT WORKER III	10195	5100	N	A50H	36,046.40	41,454.40	46,862.40	17.33	19.93	22.53
PARKS MAINT WORKER III	10196	5100	N	A50H	36,046.40	41,454.40	46,862.40	17.33	19.93	22.53
PARKS MAINT WORKER III	10197	5100	N	A50H	36,046.40	41,454.40	46,862.40	17.33	19.93	22.53
PARKS MAINT WORKER III	10198	5100	N	A50H	36,046.40	41,454.40	46,862.40	17.33	19.93	22.53
PARKS MAINT WORKER III	10199	5100	N	A50H	36,046.40	41,454.40	46,862.40	17.33	19.93	22.53
PUBLIC SERVICES MAINT ASSOC III - 5300	10589	5100	N	A50H	36,046.40	41,454.40	46,862.40	17.33	19.93	22.53
PUBLIC SERVICES MAINT ASSOC III - 6300	10622	5100	N	A50H	36,046.40	41,454.40	46,862.40	17.33	19.93	22.53
RECREATION LEADER II - 4252	10177	5100	N	A50H	36,046.40	41,454.40	46,862.40	17.33	19.93	22.53
RECREATION LEADER II - 4252	10180	5100	N	A50H	36,046.40	41,454.40	46,862.40	17.33	19.93	22.53
RECREATION LEADER II - 4252	10181	5100	N	A50H	36,046.40	41,454.40	46,862.40	17.33	19.93	22.53
RECREATION LEADER II - 4253	10175	5100	N	A50H	36,046.40	41,454.40	46,862.40	17.33	19.93	22.53
RECREATION LEADER II - 4254	10174	5100	N	A50H	36,046.40	41,454.40	46,862.40	17.33	19.93	22.53
RECREATION LEADER II - 4254	10182	5100	N	A50H	36,046.40	41,454.40	46,862.40	17.33	19.93	22.53
RECREATION LEADER II - 4260	10184	5100	N	A50H	36,046.40	41,454.40	46,862.40	17.33	19.93	22.53
SANITATION ASSOCIATE I - 5430	10610	5100	N	A50H	36,046.40	41,454.40	46,862.40	17.33	19.93	22.53
SANITATION ASSOCIATE I - 5430	10611	5100	N	A50H	36,046.40	41,454.40	46,862.40	17.33	19.93	22.53
SANITATION ASSOCIATE I - 5430	10612	5100	N	A50H	36,046.40	41,454.40	46,862.40	17.33	19.93	22.53
SANITATION ASSOCIATE I - 5431	10616	5100	N	A50H	36,046.40	41,454.40	46,862.40	17.33	19.93	22.53
SANITATION ASSOCIATE I - 5431	10617	5100	N	A50H	36,046.40	41,454.40	46,862.40	17.33	19.93	22.53
SR LIBRARY ASSISTANT	10144	5100	N	A50H	36,046.40	41,454.40	46,862.40	17.33	19.93	22.53
SR LIBRARY ASSISTANT	10145	5100	N	A50H	36,046.40	41,454.40	46,862.40	17.33	19.93	22.53
SR LIBRARY ASSISTANT	10467	5100	N	A50H	36,046.40	41,454.40	46,862.40	17.33	19.93	22.53
SR LIBRARY ASSISTANT	10517	5100	N	A50H	36,046.40	41,454.40	46,862.40	17.33	19.93	22.53
SR LIBRARY ASSISTANT	10566	5100	N	A50H	36,046.40	41,454.40	46,862.40	17.33	19.93	22.53

33

City of Dunedin
 FY 24 Pay Plan
 Positions by Grade

Position Desc	Position #	Job Class	Exempt/Non	Grade	Annual Salary Range			Hourly Range		
					Min Pay	Mid Pay	Max Pay	Hrly Min	Hrly Mid	Hrly Max
SR LIBRARY ASSISTANT	10567	5100	N	A50H	36,046.40	41,454.40	46,862.40	17.33	19.93	22.53
SR LIBRARY ASSISTANT	10568	5100	N	A50H	36,046.40	41,454.40	46,862.40	17.33	19.93	22.53
SR WATER SERVICE WORKER	10442	5100	N	A50H	36,046.40	41,454.40	46,862.40	17.33	19.93	22.53
SR WW SERVICE WORKER	10292	5100	N	A50H	36,046.40	41,454.40	46,862.40	17.33	19.93	22.53
SR WW SERVICE WORKER	10449	5100	N	A50H	36,046.40	41,454.40	46,862.40	17.33	19.93	22.53
SR WW SERVICE WORKER	10450	5100	N	A50H	36,046.40	41,454.40	46,862.40	17.33	19.93	22.53
UTILITY BILLING TECHNICIAN	10018	5100	N	A50H	36,046.40	41,454.40	46,862.40	17.33	19.93	22.53
UTILITY BILLING TECHNICIAN	10019	5100	N	A50H	36,046.40	41,454.40	46,862.40	17.33	19.93	22.53
UTILITY BILLING TECHNICIAN	10020	5100	N	A50H	36,046.40	41,454.40	46,862.40	17.33	19.93	22.53
UTILITY BILLING TECHNICIAN	10021	5100	N	A50H	36,046.40	41,454.40	46,862.40	17.33	19.93	22.53
UTILITY BILLING TECHNICIAN	10022	5100	N	A50H	36,046.40	41,454.40	46,862.40	17.33	19.93	22.53
CRAFTSWORKER II	10358	5100	N	A51H	38,001.60	45,604.00	53,206.40	18.27	21.93	25.58
CRAFTSWORKER II	10359	5100	N	A51H	38,001.60	45,604.00	53,206.40	18.27	21.93	25.58
CRAFTSWORKER II	10360	5100	N	A51H	38,001.60	45,604.00	53,206.40	18.27	21.93	25.58
CRAFTSWORKER II	10675	5100	N	A51H	38,001.60	45,604.00	53,206.40	18.27	21.93	25.58
HORTICULTURAL TECHNICIAN	10542	5100	N	A51H	38,001.60	45,604.00	53,206.40	18.27	21.93	25.58
HORTICULTURAL TECHNICIAN	10581	5100	N	A51H	38,001.60	45,604.00	53,206.40	18.27	21.93	25.58
IRRIGATION TECHNICIAN	10193	5100	N	A51H	38,001.60	45,604.00	53,206.40	18.27	21.93	25.58
IRRIGATION TECHNICIAN	10194	5100	N	A51H	38,001.60	45,604.00	53,206.40	18.27	21.93	25.58
MARINE MAINT TECHNICIAN	10219	5100	N	A51H	38,001.60	45,604.00	53,206.40	18.27	21.93	25.58
PARK ATTENDANT III	10462	5100	N	A51H	38,001.60	45,604.00	53,206.40	18.27	21.93	25.58
RECREATION LEADER III - 4252	10167	5100	N	A51H	38,001.60	45,604.00	53,206.40	18.27	21.93	25.58
RECREATION LEADER III - 4252	10472	5100	N	A51H	38,001.60	45,604.00	53,206.40	18.27	21.93	25.58
RECREATION LEADER III - 4253	10169	5100	N	A51H	38,001.60	45,604.00	53,206.40	18.27	21.93	25.58
RECREATION LEADER III - 4253	10170	5100	N	A51H	38,001.60	45,604.00	53,206.40	18.27	21.93	25.58
RECREATION LEADER III - 4254	10168	5100	N	A51H	38,001.60	45,604.00	53,206.40	18.27	21.93	25.58
RECREATION LEADER III - 4258	10172	5100	N	A51H	38,001.60	45,604.00	53,206.40	18.27	21.93	25.58
SANITATION ASSOCIATE II - 5430	10604	5100	N	A51H	38,001.60	45,604.00	53,206.40	18.27	21.93	25.58
SANITATION ASSOCIATE II - 5430	10605	5100	N	A51H	38,001.60	45,604.00	53,206.40	18.27	21.93	25.58
SANITATION ASSOCIATE II - 5430	10606	5100	N	A51H	38,001.60	45,604.00	53,206.40	18.27	21.93	25.58
SANITATION ASSOCIATE II - 5430	10607	5100	N	A51H	38,001.60	45,604.00	53,206.40	18.27	21.93	25.58
SANITATION ASSOCIATE II - 5430	10608	5100	N	A51H	38,001.60	45,604.00	53,206.40	18.27	21.93	25.58
SANITATION ASSOCIATE II - 5430	10609	5100	N	A51H	38,001.60	45,604.00	53,206.40	18.27	21.93	25.58
SANITATION ASSOCIATE II - 5431	10615	5100	N	A51H	38,001.60	45,604.00	53,206.40	18.27	21.93	25.58
SPRAY TECHNICIAN	10192	5100	N	A51H	38,001.60	45,604.00	53,206.40	18.27	21.93	25.58
SR ADMINISTRATIVE ASSISTANT - CITY CLERK	10008	5100	N	A51H	38,001.60	45,604.00	53,206.40	18.27	21.93	25.58
SR ADMINISTRATIVE ASSISTANT - CITY MANAGER	10004	5100	N	A51H	38,001.60	45,604.00	53,206.40	18.27	21.93	25.58
SR ADMINISTRATIVE ASSISTANT - LIBRARY	10538	5100	N	A51H	38,001.60	45,604.00	53,206.40	18.27	21.93	25.58
SR ADMINISTRATIVE ASSISTANT - PARKS	10575	5100	N	A51H	38,001.60	45,604.00	53,206.40	18.27	21.93	25.58
SR ADMINISTRATIVE ASSISTANT - RECREATION ADMIN	10159	5100	N	A51H	38,001.60	45,604.00	53,206.40	18.27	21.93	25.58
SR ADMINISTRATIVE ASSISTANT - SOLID WASTE	10318	5100	N	A51H	38,001.60	45,604.00	53,206.40	18.27	21.93	25.58
SR ADMINISTRATIVE ASSISTANT - WATER	10460	5100	N	A51H	38,001.60	45,604.00	53,206.40	18.27	21.93	25.58
WATER PLANT OPERATOR TRAINEE	10541	6200	N	A51H	38,001.60	45,604.00	53,206.40	18.27	21.93	25.58
WW PLANT OPERATOR TRAINEE	10269	5100	N	A51H	38,001.60	45,604.00	53,206.40	18.27	21.93	25.58
WW PLANT OPERATOR TRAINEE	10529	5100	N	A51H	38,001.60	45,604.00	53,206.40	18.27	21.93	25.58
ACCOUNTING SPECIALIST	10546	5000	E	A52E	41,787.20	50,148.80	58,510.40	20.09	24.11	28.13
ACCOUNTS TECHNICIAN	10031	5100	N	A52H	41,787.20	50,148.80	58,510.40	20.09	24.11	28.13
ACCOUNTS TECHNICIAN	10032	5100	N	A52H	41,787.20	50,148.80	58,510.40	20.09	24.11	28.13
ADMINISTRATIVE COORDINATOR - FINANCE	10030	5100	N	A52H	41,787.20	50,148.80	58,510.40	20.09	24.11	28.13
ADMINISTRATIVE COORDINATOR - FIRE	10080	5100	N	A52H	41,787.20	50,148.80	58,510.40	20.09	24.11	28.13
ADMINISTRATIVE COORDINATOR - LIBRARY	10127	5100	N	A52H	41,787.20	50,148.80	58,510.40	20.09	24.11	28.13
ADMINISTRATIVE COORDINATOR - PARKS & REC	10502	5100	N	A52H	41,787.20	50,148.80	58,510.40	20.09	24.11	28.13

34

City of Dunedin
 FY 24 Pay Plan
 Positions by Grade

Position Desc	Position #	Job Class	Exempt/Non	Grade	Annual Salary Range			Hourly Range		
					Min Pay	Mid Pay	Max Pay	Hrly Min	Hrly Mid	Hrly Max
ADMINISTRATIVE COORDINATOR - PUB SERVICES	10363	5100	N	A52H	41,787.20	50,148.80	58,510.40	20.09	24.11	28.13
ADMINISTRATIVE COORDINATOR - WW	10578	5100	N	A52H	41,787.20	50,148.80	58,510.40	20.09	24.11	28.13
COMMUNITY DEVELOPMENT TECHNICIAN	10057	5100	N	A52H	41,787.20	50,148.80	58,510.40	20.09	24.11	28.13
COMMUNITY DEVELOPMENT TECHNICIAN	10058	5100	N	A52H	41,787.20	50,148.80	58,510.40	20.09	24.11	28.13
COMMUNITY DEVELOPMENT TECHNICIAN	10059	5100	N	A52H	41,787.20	50,148.80	58,510.40	20.09	24.11	28.13
CRAFTSWORKER III - HVAC	10357	5100	N	A52H	41,787.20	50,148.80	58,510.40	20.09	24.11	28.13
CUSTODIAL SERVICES COORDINATOR	10364	5100	N	A52H	41,787.20	50,148.80	58,510.40	20.09	24.11	28.13
FLEET ADMINISTRATIVE TECHNICIAN	10494	5100	N	A52H	41,787.20	50,148.80	58,510.40	20.09	24.11	28.13
HEAD LIFEGUARD	10459	5100	N	A52H	41,787.20	50,148.80	58,510.40	20.09	24.11	28.13
HR/RISK MANAGEMENT ASSISTANT	10515	5100	N	A52H	41,787.20	50,148.80	58,510.40	20.09	24.11	28.13
IT SERVICES TECHNICIAN I	10038	5100	N	A52H	41,787.20	50,148.80	58,510.40	20.09	24.11	28.13
MECHANIC	10337	6600	N	A52H	41,787.20	50,148.80	58,510.40	20.09	24.11	28.13
MECHANIC	10338	6600	N	A52H	41,787.20	50,148.80	58,510.40	20.09	24.11	28.13
MECHANIC	10339	6600	N	A52H	41,787.20	50,148.80	58,510.40	20.09	24.11	28.13
MECHANIC	10340	6600	N	A52H	41,787.20	50,148.80	58,510.40	20.09	24.11	28.13
MECHANIC	10528	6600	N	A52H	41,787.20	50,148.80	58,510.40	20.09	24.11	28.13
RECORDS MANAGEMENT SPECIALIST	10007	5100	N	A52H	41,787.20	50,148.80	58,510.40	20.09	24.11	28.13
RECREATION LEADER III BASP SUPERVISOR	10571	4510	N	A52H	41,787.20	50,148.80	58,510.40	20.09	24.11	28.13
RECREATION LEADER III BASP SUPERVISOR	10572	4510	N	A52H	41,787.20	50,148.80	58,510.40	20.09	24.11	28.13
RECREATION LEADER III BASP SUPERVISOR	10573	4510	N	A52H	41,787.20	50,148.80	58,510.40	20.09	24.11	28.13
RECREATION TECHNICIAN	10173	5100	N	A52H	41,787.20	50,148.80	58,510.40	20.09	24.11	28.13
SANITATION ASSOCIATE III - 5430	10603	5100	N	A52H	41,787.20	50,148.80	58,510.40	20.09	24.11	28.13
SANITATION ASSOCIATE III - 5431	10613	5100	N	A52H	41,787.20	50,148.80	58,510.40	20.09	24.11	28.13
SANITATION ASSOCIATE III - 5431	10614	5100	N	A52H	41,787.20	50,148.80	58,510.40	20.09	24.11	28.13
SPECIAL EVENTS PROGRAMMER	10570	5100	N	A52H	41,787.20	50,148.80	58,510.40	20.09	24.11	28.13
TECHNICAL SUPPORT COORDINATOR - WW	10583	5100	N	A52H	41,787.20	50,148.80	58,510.40	20.09	24.11	28.13
UTILITY DATA CONTROL COORDINATOR	10235	5100	N	A52H	41,787.20	50,148.80	58,510.40	20.09	24.11	28.13
WATER DISTRIBUTION TECH	10254	5100	N	A52H	41,787.20	50,148.80	58,510.40	20.09	24.11	28.13
WATER DISTRIBUTION TECH	10259	5100	N	A52H	41,787.20	50,148.80	58,510.40	20.09	24.11	28.13
WW COLLECTION TECHNICIAN	10290	5100	N	A52H	41,787.20	50,148.80	58,510.40	20.09	24.11	28.13
WW COLLECTION TECHNICIAN	10448	5100	N	A52H	41,787.20	50,148.80	58,510.40	20.09	24.11	28.13
ASSISTANT GOLF PROFESSIONAL	10669	4510	N	A53H	45,968.00	55,161.60	64,355.20	22.10	26.52	30.94
ENGINEERING DESIGNER	10560	5100	N	A53H	45,968.00	55,161.60	64,355.20	22.10	26.52	30.94
ENVIRONMENTAL SPECIALIST I PW - SOLID WASTE	10666	5000	E	A53E	45,968.00	55,161.60	64,355.20	22.10	26.52	30.94
ENVIRONMENTAL SPECIALIST I PW - STORMWATER	10665	5000	E	A53E	45,968.00	55,161.60	64,355.20	22.10	26.52	30.94
LEAD SANITATION ASSOCIATE	10602	5100	N	A53H	45,968.00	55,161.60	64,355.20	22.10	26.52	30.94
LIBRARIAN	10132	5100	N	A53H	45,968.00	55,161.60	64,355.20	22.10	26.52	30.94
LIBRARIAN	10133	5100	N	A53H	45,968.00	55,161.60	64,355.20	22.10	26.52	30.94
LIBRARIAN	10134	5100	N	A53H	45,968.00	55,161.60	64,355.20	22.10	26.52	30.94
LIBRARIAN	10135	5100	N	A53H	45,968.00	55,161.60	64,355.20	22.10	26.52	30.94
LIBRARIAN	10136	5100	N	A53H	36,865.92	47,925.67	58,985.42	17.72	23.04	28.36
LIBRARIAN	10513	5100	N	A53H	45,968.00	55,161.60	64,355.20	22.10	26.52	30.94
LIBRARIAN (PT 40 HR)	10137	5200	N	P53H	22,984.00	27,580.80	32,177.60	22.10	26.52	30.94
LIBRARIAN (PT 40 HR)	10544	5200	N	P53H	22,984.00	27,580.80	32,177.60	22.10	26.52	30.94
LIBRARIAN (PT 56 HR)	10138	5200	N	P53H	32,177.60	38,613.12	45,048.64	22.10	26.52	30.94
PUBLIC SERVICES CREW CHIEF - 5300	10587	5100	N	A53H	45,968.00	55,161.60	64,355.20	22.10	26.52	30.94
PUBLIC SERVICES CREW CHIEF - 5300	10588	5100	N	A53H	45,968.00	55,161.60	64,355.20	22.10	26.52	30.94
PUBLIC SERVICES CREW CHIEF - 6300	10620	5100	N	A53H	45,968.00	55,161.60	64,355.20	22.10	26.52	30.94
PUBLIC SERVICES CREW CHIEF - 6300	10621	5100	N	A53H	45,968.00	55,161.60	64,355.20	22.10	26.52	30.94
WATER MAINT MECHANIC	10248	6300	N	A53H	45,968.00	55,161.60	64,355.20	22.10	26.52	30.94
WATER MAINT MECHANIC	10653	6300	N	A53H	45,968.00	55,161.60	64,355.20	22.10	26.52	30.94
WATER PLANT OPERATOR	10241	6100	N	A53H	45,968.00	55,161.60	64,355.20	22.10	26.52	30.94

35

City of Dunedin
 FY 24 Pay Plan
 Positions by Grade

Position Desc	Position #	Job Class	Exempt/Non	Grade	Annual Salary Range			Hourly Range		
					Min Pay	Mid Pay	Max Pay	Hrly Min	Hrly Mid	Hrly Max
WATER PLANT OPERATOR	10242	6100	N	A53H	45,968.00	55,161.60	64,355.20	22.10	26.52	30.94
WATER PLANT OPERATOR	10243	6100	N	A53H	45,968.00	55,161.60	64,355.20	22.10	26.52	30.94
WATER PLANT OPERATOR	10244	6100	N	A53H	45,968.00	55,161.60	64,355.20	22.10	26.52	30.94
WATER PLANT OPERATOR	10245	6100	N	A53H	45,968.00	55,161.60	64,355.20	22.10	26.52	30.94
WATER PLANT OPERATOR	10246	6100	N	A53H	45,968.00	55,161.60	64,355.20	22.10	26.52	30.94
WATER PLANT OPERATOR	10247	6100	N	A53H	45,968.00	55,161.60	64,355.20	22.10	26.52	30.94
WW MAINT MECHANIC	10280	5100	N	A53H	45,968.00	55,161.60	64,355.20	22.10	26.52	30.94
WW MAINT MECHANIC	10281	5100	N	A53H	45,968.00	55,161.60	64,355.20	22.10	26.52	30.94
WW MAINT MECHANIC	10282	5100	N	A53H	45,968.00	55,161.60	64,355.20	22.10	26.52	30.94
WW MAINT MECHANIC	10283	5100	N	A53H	45,968.00	55,161.60	64,355.20	22.10	26.52	30.94
WW MAINT MECHANIC	10284	5100	N	A53H	45,968.00	55,161.60	64,355.20	22.10	26.52	30.94
WW MAINT MECHANIC	10481	5100	N	A53H	45,968.00	55,161.60	64,355.20	22.10	26.52	30.94
WW PLANT OPERATOR	10270	5100	N	A53H	45,968.00	55,161.60	64,355.20	22.10	26.52	30.94
WW PLANT OPERATOR	10271	5100	N	A53H	45,968.00	55,161.60	64,355.20	22.10	26.52	30.94
WW PLANT OPERATOR	10273	5100	N	A53H	45,968.00	55,161.60	64,355.20	22.10	26.52	30.94
WW PLANT OPERATOR	10274	5100	N	A53H	45,968.00	55,161.60	64,355.20	22.10	26.52	30.94
WW PLANT OPERATOR	10276	5100	N	A53H	45,968.00	55,161.60	64,355.20	22.10	26.52	30.94
WW PLANT OPERATOR	10277	5100	N	A53H	45,968.00	55,161.60	64,355.20	22.10	26.52	30.94
WW PLANT OPERATOR	10445	5100	N	A53H	45,968.00	55,161.60	64,355.20	22.10	26.52	30.94
WW PLANT OPERATOR	10446	5100	N	A53H	45,968.00	55,161.60	64,355.20	22.10	26.52	30.94
ACCOUNTANT/ FINANCIAL ANALYST	10658	5000	E	A54E	50,564.80	60,673.60	70,782.40	24.31	29.17	34.03
BUDGET/ FINANCIAL ANALYST	10028	5000	E	A54E	50,564.80	60,673.60	70,782.40	24.31	29.17	34.03
BUILDING INSPECTOR	10552	5100	N	A54H	50,564.80	60,673.60	70,782.40	24.31	29.17	34.03
BUILDING INSPECTOR	10553	5100	N	A54H	50,564.80	60,673.60	70,782.40	24.31	29.17	34.03
BUSINESS ANALYST	10676	5000	E	A54E	50,564.80	60,673.60	70,782.40	24.31	29.17	34.03
BUYER	10582	5000	E	A54E	50,564.80	60,673.60	70,782.40	24.31	29.17	34.03
CODE COMPLIANCE INSPECTOR	10054	5100	N	A54H	50,564.80	60,673.60	70,782.40	24.31	29.17	34.03
CODE COMPLIANCE INSPECTOR	10055	5100	N	A54H	50,564.80	60,673.60	70,782.40	24.31	29.17	34.03
ECONOMIC DEVELOPMENT SPECIALIST	10063	5000	E	A54E	50,564.80	60,673.60	70,782.40	24.31	29.17	34.03
ENGINEERING INSPECTOR	10561	5100	N	A54H	50,564.80	60,673.60	70,782.40	24.31	29.17	34.03
ENGINEERING INSPECTOR	10562	5100	N	A54H	50,564.80	60,673.60	70,782.40	24.31	29.17	34.03
FIRE INSPECTOR	10651	9250	N	F54H	50,564.80	60,673.60	70,782.40	24.31	29.17	34.03
FITNESS PROGRAM COORDINATOR	10569	5100	N	A54H	50,564.80	60,673.60	70,782.40	24.31	29.17	34.03
IT SERVICES TECHNICIAN II	10480	5100	N	A54H	50,564.80	60,673.60	70,782.40	24.31	29.17	34.03
IT SERVICES TECHNICIAN II	10548	5100	N	A54H	50,564.80	60,673.60	70,782.40	24.31	29.17	34.03
LEAD CRAFTSWORKER	10355	4510	N	A54H	50,564.80	60,673.60	70,782.40	24.31	29.17	34.03
LEAD CRAFTSWORKER	10356	4510	N	A54H	50,564.80	60,673.60	70,782.40	24.31	29.17	34.03
LEAD CRAFTSWORKER	10674	4510	N	A54H	50,564.80	60,673.60	70,782.40	24.31	29.17	34.03
MULTIMEDIA PUBLIC INFORMATION COORDINATOR	10526	5000	E	A54E	50,564.80	60,673.60	70,782.40	24.31	29.17	34.03
PLANNER I	10486	5000	E	A54E	50,564.80	60,673.60	70,782.40	24.31	29.17	34.03
PUBLIC SERVICES FOREMAN	10301	4510	N	A54H	50,564.80	60,673.60	70,782.40	24.31	29.17	34.03
SPECIAL PROJECT COORDINATOR	10496	5100	N	A54H	50,564.80	60,673.60	70,782.40	24.31	29.17	34.03
SR ENGINEERING DESIGNER	10227	5000	E	A54E	50,564.80	60,673.60	70,782.40	24.31	29.17	34.03
SR WATER DISTRIBUTION TECH	10251	5100	N	A54H	50,564.80	60,673.60	70,782.40	24.31	29.17	34.03
SR WATER DISTRIBUTION TECH	10253	5100	N	A54H	50,564.80	60,673.60	70,782.40	24.31	29.17	34.03
SR WW COLLECTION TECH	10447	5100	N	A54H	50,564.80	60,673.60	70,782.40	24.31	29.17	34.03
SUSTAINABILITY PROGRAM MANAGER	10520	4500	E	A54E	50,564.80	60,673.60	70,782.40	24.31	29.17	34.03
TV & SEAL TRUCK OPERATOR	10279	5100	N	A54H	50,564.80	60,673.60	70,782.40	24.31	29.17	34.03
WEBSITE/DIGITAL COORDINATOR	10514	5000	E	A54E	50,564.80	60,673.60	70,782.40	24.31	29.17	34.03
HR/RISK MANAGEMENT COORDINATOR	10042	5000	E	A55E	55,619.20	66,747.20	77,875.20	26.74	32.09	37.44
LEAD MECHANIC	10335	6500	N	A55H	55,619.20	66,747.20	77,875.20	26.74	32.09	37.44
LEAD WATER PLANT OPERATOR	10238	6000	N	A55H	55,619.20	66,747.20	77,875.20	26.74	32.09	37.44

36

City of Dunedin
 FY 24 Pay Plan
 Positions by Grade

Position Desc	Position #	Job Class	Exempt/Non	Grade	Annual Salary Range			Hourly Range		
					Min Pay	Mid Pay	Max Pay	Hrly Min	Hrly Mid	Hrly Max
LEAD WATER PLANT OPERATOR	10240	6000	N	A55H	55,619.20	66,747.20	77,875.20	26.74	32.09	37.44
LEAD WW PLANT OPERATOR	10266	4510	N	A55H	55,619.20	66,747.20	77,875.20	26.74	32.09	37.44
LEAD WW PLANT OPERATOR	10267	4510	N	A55H	55,619.20	66,747.20	77,875.20	26.74	32.09	37.44
LEAD WW PLANT OPERATOR	10268	4510	N	A55H	55,619.20	66,747.20	77,875.20	26.74	32.09	37.44
PARKS MAINTENANCE FOREMAN	10659	4510	N	A55H	55,619.20	66,747.20	77,875.20	26.74	32.09	37.44
PARKS MAINTENANCE FOREMAN	10660	4510	N	A55H	55,619.20	66,747.20	77,875.20	26.74	32.09	37.44
PARKS MAINTENANCE FOREMAN	10661	4510	N	A55H	55,619.20	66,747.20	77,875.20	26.74	32.09	37.44
PARKS MAINTENANCE FOREMAN	10662	4510	N	A55H	55,619.20	66,747.20	77,875.20	26.74	32.09	37.44
PARKS MAINTENANCE FOREMAN	10663	4510	N	A55H	55,619.20	66,747.20	77,875.20	26.74	32.09	37.44
PLANS REVIEWER	10559	5000	E	A55E	55,619.20	66,747.20	77,875.20	26.74	32.09	37.44
SANITATION FOREMAN	10600	4510	N	A55H	55,619.20	66,747.20	77,875.20	26.74	32.09	37.44
SR ACCOUNTANT	10026	4500	E	A55E	55,619.20	66,747.20	77,875.20	26.74	32.09	37.44
WATER DISTRIBUTION FOREMAN	10250	4510	N	A55H	55,619.20	66,747.20	77,875.20	26.74	32.09	37.44
WATER DISTRIBUTION FOREMAN	10657	4510	N	A55H	55,619.20	66,747.20	77,875.20	26.74	32.09	37.44
WW COLLECTION FOREMAN	10286	4510	N	A55H	55,619.20	66,747.20	77,875.20	26.74	32.09	37.44
BUSINESS MANAGER	10048	4000	E	A56E	61,193.60	73,434.40	85,675.20	29.42	35.31	41.19
CODE COMPLIANCE SUPERVISOR	10475	4500	E	A56E	61,193.60	73,434.40	85,675.20	29.42	35.31	41.19
DEPUTY CITY CLERK	10006	4000	E	A56E	61,193.60	73,434.40	85,675.20	29.42	35.31	41.19
ECONOMIC DEVELOPMENT PROJECT MANAGER	10495	4500	E	A56E	61,193.60	73,434.40	85,675.20	29.42	35.31	41.19
ENGINEER I	10557	4500	E	A56E	61,193.60	73,434.40	85,675.20	29.42	35.31	41.19
ENGINEERING CONTRACTS MANAGER	10539	4500	E	A56E	61,193.60	73,434.40	85,675.20	29.42	35.31	41.19
ENGINEERING PROJECT MANAGER	10558	4500	E	A56E	61,193.60	73,434.40	85,675.20	29.42	35.31	41.19
ENVIRONMENTAL PROGRAM MANAGER	10586	4500	E	A56E	61,193.60	73,434.40	85,675.20	29.42	35.31	41.19
EXECUTIVE OFFICE COORDINATOR	10003	4500	E	A56E	61,193.60	73,434.40	85,675.20	29.42	35.31	41.19
FACILITIES FOREMAN	10630	4510	N	A56H	61,193.60	73,434.40	85,675.20	29.42	35.31	41.19
HEAD GOLF PROFESSIONAL	10668	4000	E	A56E	61,193.60	73,434.40	85,675.20	29.42	35.31	41.19
IT NETWORK ADMINISTRATOR I	10510	5000	E	A56E	61,193.60	73,434.40	85,675.20	29.42	35.31	41.19
LIBRARY MANAGER	10564	4500	E	A56E	61,193.60	73,434.40	85,675.20	29.42	35.31	41.19
LIBRARY MANAGER	10565	4500	E	A56E	61,193.60	73,434.40	85,675.20	29.42	35.31	41.19
PLANNER II	10046	5000	E	A56E	61,193.60	73,434.40	85,675.20	29.42	35.31	41.19
RECREATION MARKETING COORDINATOR	10574	4500	E	A56E	61,193.60	73,434.40	85,675.20	29.42	35.31	41.19
SANITATION MANAGER	10599	4500	E	A56E	61,193.60	73,434.40	85,675.20	29.42	35.31	41.19
SR BUILDING INSPECTOR	10550	5100	N	A56H	61,193.60	73,434.40	85,675.20	29.42	35.31	41.19
SR BUILDING INSPECTOR	10551	5100	N	A56H	61,193.60	73,434.40	85,675.20	29.42	35.31	41.19
SR COMMUNICATIONS SPECIALIST	10549	5000	E	A56E	61,193.60	73,434.40	85,675.20	29.42	35.31	41.19
UTILITY BILLING SUPERVISOR	10017	4500	E	A56E	61,193.60	73,434.40	85,675.20	29.42	35.31	41.19
CAD/GIS SYSTEMS ADMINISTRATOR	10226	5000	E	A57E	67,308.80	80,766.40	94,224.00	32.36	38.83	45.30
CITY ARBORIST	10191	4500	E	A57E	67,308.80	80,766.40	94,224.00	32.36	38.83	45.30
DISTRICT CHIEF*	10075	9300	E	F57E	94,232.32	113,072.96	131,913.60	32.36	38.83	45.30
DISTRICT CHIEF*	10076	9300	E	F57E	94,232.32	113,072.96	131,913.60	32.36	38.83	45.30
DISTRICT CHIEF*	10077	9300	E	F57E	94,232.32	113,072.96	131,913.60	32.36	38.83	45.30
FLEET FOREMAN	10619	6400	N	A57H	67,308.80	80,766.40	94,224.00	32.36	38.83	45.30
HARBORMASTER	10218	4500	E	A57E	67,308.80	80,766.40	94,224.00	32.36	38.83	45.30
HYDROGEOLOGIST	10234	5000	E	A57E	67,308.80	80,766.40	94,224.00	32.36	38.83	45.30
IT NETWORK ADMINISTRATOR II	10509	5000	E	A57E	67,308.80	80,766.40	94,224.00	32.36	38.83	45.30
PURCHASING AGENT	10027	5000	E	A57E	67,308.80	80,766.40	94,224.00	32.36	38.83	45.30
RECREATION PROGRAM COORDINATOR - 4250	10161	4500	E	A57E	67,308.80	80,766.40	94,224.00	32.36	38.83	45.30
RECREATION PROGRAM COORDINATOR - 4251	10498	4500	E	A57E	67,308.80	80,766.40	94,224.00	32.36	38.83	45.30
RECREATION PROGRAM COORDINATOR - 4252	10162	4500	E	A57E	67,308.80	80,766.40	94,224.00	32.36	38.83	45.30
RECREATION PROGRAM COORDINATOR - 4253	10163	4500	E	A57E	67,308.80	80,766.40	94,224.00	32.36	38.83	45.30
RECREATION PROGRAM COORDINATOR - 4254	10160	4500	E	A57E	67,308.80	80,766.40	94,224.00	32.36	38.83	45.30
RECREATION PROGRAM COORDINATOR - 4260	10677	4500	E	A57E	67,308.80	80,766.40	94,224.00	32.36	38.83	45.30

37

City of Dunedin
FY 24 Pay Plan
Positions by Grade

Position Desc	Position #	Job Class	Exempt/Non	Grade	Annual Salary Range			Hourly Range		
					Min Pay	Mid Pay	Max Pay	Hrly Min	Hrly Mid	Hrly Max
SR COMPENSATION & BENEFITS COORDINATOR	10547	5000	E	A57E	67,308.80	80,766.40	94,224.00	32.36	38.83	45.30
WATER DISTRIBUTION MANAGER	10577	4000	E	A57E	67,308.80	80,766.40	94,224.00	32.36	38.83	45.30
WW COLLECTION MANAGER	10580	4000	E	A57E	67,308.80	80,766.40	94,224.00	32.36	38.83	45.30
ASSISTANT LIBRARY DIRECTOR	10563	4000	E	A58E	74,027.20	88,836.80	103,646.40	35.59	42.71	49.83
CHIEF BUILDING INSPECTOR/PLANS EXAMINER	10516	4000	E	A58E	74,027.20	88,836.80	103,646.40	35.59	42.71	49.83
COMMUNITY DEV PROJECT MANAGER	10504	5000	E	A58E	74,027.20	88,836.80	103,646.40	35.59	42.71	49.83
DEPUTY FIRE MARSHAL	10554	9200	E	F58E	74,027.20	88,836.80	103,646.40	35.59	42.71	49.83
ENGINEER II	10556	4500	E	A58E	74,027.20	88,836.80	103,646.40	35.59	42.71	49.83
FACILITIES MANAGER	10629	4500	E	A58E	74,027.20	88,836.80	103,646.40	35.59	42.71	49.83
HUMAN RESOURCES MANAGER	10540	4000	E	A58E	74,027.20	88,836.80	103,646.40	35.59	42.71	49.83
PARKS MAINT SUPERVISOR	10185	4500	E	A58E	74,027.20	88,836.80	103,646.40	35.59	42.71	49.83
PUBLIC SERVICES MANAGER	10585	4000	E	A58E	74,027.20	88,836.80	103,646.40	35.59	42.71	49.83
SPECIAL EVENTS COORDINATOR	10164	5000	E	A58E	74,027.20	88,836.80	103,646.40	35.59	42.71	49.83
STRATEGY & SUSTAINABILITY MANAGER	10545	4000	E	A58E	74,027.20	88,836.80	103,646.40	35.59	42.71	49.83
WATER PLANT MANAGER	10576	4000	E	A58E	74,027.20	88,836.80	103,646.40	35.59	42.71	49.83
WW PLANT MANAGER	10579	4000	E	A58E	74,027.20	88,836.80	103,646.40	35.59	42.71	49.83
FLEET SERVICES MANAGER	10618	4000	E	A59E	81,432.00	97,718.40	114,004.80	39.15	46.98	54.81
IT SENIOR SYSTEMS ENGINEER	10034	5000	E	A59E	81,432.00	97,718.40	114,004.80	39.15	46.98	54.81
ACCOUNTING MANAGER	10024	4000	E	A60E	87,942.40	109,928.00	131,913.60	42.28	52.85	63.42
BUDGET MANAGER	10025	4000	E	A60E	87,942.40	109,928.00	131,913.60	42.28	52.85	63.42
DIVISION CHIEF OF EMS	10074	9200	E	F60E	87,942.40	109,928.00	131,913.60	42.28	52.85	63.42
DIVISION CHIEF OF LOGISTICS	10478	9200	E	F60E	87,942.40	109,928.00	131,913.60	42.28	52.85	63.42
DIVISION CHIEF OF TRAINING	10073	9200	E	F60E	87,942.40	109,928.00	131,913.60	42.28	52.85	63.42
ENGINEER III	10555	4500	E	A60E	87,942.40	109,928.00	131,913.60	42.28	52.85	63.42
GENERAL MANAGER OF GOLF OPERATIONS	10527	3000	E	A60E	87,942.40	109,928.00	131,913.60	42.28	52.85	63.42
PARKS & REC ADMIN SUPERINTENDENT	10156	4000	E	A60E	87,942.40	109,928.00	131,913.60	42.28	52.85	63.42
PARKS & REC SUPERINTENDENT	10485	4000	E	A60E	87,942.40	109,928.00	131,913.60	42.28	52.85	63.42
SANITATION & RECYCLING SUPERINTENDENT	10598	4000	E	A60E	87,942.40	109,928.00	131,913.60	42.28	52.85	63.42
ASSIST DIR OF COMMUNITY DEVELOPMENT	10045	4000	E	A61E	98,945.60	123,687.20	148,428.80	47.57	59.47	71.36
ASSIST DIR OF PUBLIC WORKS	10584	4000	E	A61E	98,945.60	123,687.20	148,428.80	47.57	59.47	71.36
ASSIST DIR OF UTILITIES/ CITY ENGINEER	10536	4000	E	A61E	98,945.60	123,687.20	148,428.80	47.57	59.47	71.36
CITY CLERK	10005	2100	E	A62E	111,300.80	139,131.20	166,961.60	53.51	66.89	80.27
DEPUTY CHIEF/ FIRE MARSHAL	10477	9200	E	F61E	98,945.60	123,687.20	148,428.80	47.57	59.47	71.36
DIR OF COMMUNICATIONS	10483	3000	E	A62E	111,300.80	139,131.20	166,961.60	53.51	66.89	80.27
DIR OF COMMUNITY DEVELOPMENT	10044	3000	E	A62E	111,300.80	139,131.20	166,961.60	53.51	66.89	80.27
DIR OF ECONOMIC & HOUSING DEVELOPMENT	10062	3000	E	A62E	111,300.80	139,131.20	166,961.60	53.51	66.89	80.27
DIR OF HR & RISK MANAGEMENT	10039	3000	E	A62E	111,300.80	139,131.20	166,961.60	53.51	66.89	80.27
DIR OF IT SERVICES	10033	3000	E	A62E	111,300.80	139,131.20	166,961.60	53.51	66.89	80.27
DIR OF PARKS AND RECREATION	10154	3000	E	A62E	111,300.80	139,131.20	166,961.60	53.51	66.89	80.27
DIR OF PUBLIC WORKS	10519	3000	E	A62E	111,300.80	139,131.20	166,961.60	53.51	66.89	80.27
DIR OF UTILITIES & ENGINEERING	10518	3000	E	A62E	111,300.80	139,131.20	166,961.60	53.51	66.89	80.27
FIRE CHIEF	10070	9000	E	F62E	111,300.80	139,131.20	166,961.60	53.51	66.89	80.27
LIBRARY DIRECTOR	10126	3000	E	A62E	111,300.80	139,131.20	166,961.60	53.51	66.89	80.27
DIR OF FINANCE	10023	3000	E	A63E	125,216.00	156,520.00	187,824.00	60.20	75.25	90.30
DEPUTY CITY MANAGER	10001	3000	E	A64E	144,476.80	187,824.00	231,171.20	69.46	90.30	111.14
CITY MANAGER	10000	2000	E	A65E	173,388.80	225,409.60	277,430.40	83.36	108.37	133.38
COMMISSIONER	10012	1110	E	C06E	11,500.00	11,500.00	11,500.00	11.06	11.06	11.06
COMMISSIONER	10013	1110	E	C06E	11,500.00	11,500.00	11,500.00	11.06	11.06	11.06
COMMISSIONER	10014	1110	E	C06E	11,500.00	11,500.00	11,500.00	11.06	11.06	11.06
COMMISSIONER	10015	1110	E	C06E	11,500.00	11,500.00	11,500.00	11.06	11.06	11.06
MAYOR	10011	1110	E	C06E	15,000.00	15,000.00	15,000.00	14.42	14.42	14.42
FIREFIGHTER/ EMT*	10122	9505	N	FNEE	47,610.31	59,512.89	71,415.46	16.35	20.44	24.52

38

City of Dunedin
 FY 24 Pay Plan
 Positions by Grade

Position Desc	Position #	Job Class	Exempt/Non	Grade	Annual Salary Range			Hourly Range		
					Min Pay	Mid Pay	Max Pay	Hrly Min	Hrly Mid	Hrly Max
FIREFIGHTER/ EMT*	10123	9505	N	FNEE	47,610.31	59,512.89	71,415.46	16.35	20.44	24.52
FIREFIGHTER/ EMT*	10124	9505	N	FNEE	47,610.31	59,512.89	71,415.46	16.35	20.44	24.52
FIREFIGHTER/ EMT*	10125	9505	N	FNEE	47,610.31	59,512.89	71,415.46	16.35	20.44	24.52
FIREFIGHTER/ EMT*	10451	9505	N	FNEE	47,610.31	59,512.89	71,415.46	16.35	20.44	24.52
FIREFIGHTER/ EMT*	10521	9505	N	FNEE	47,610.31	59,512.89	71,415.46	16.35	20.44	24.52
FIREFIGHTER/ EMT*	10522	9505	N	FNEE	47,610.31	59,512.89	71,415.46	16.35	20.44	24.52
FIREFIGHTER/ EMT*	10537	9505	N	FNEE	47,610.31	59,512.89	71,415.46	16.35	20.44	24.52
FIREFIGHTER/ EMT*	10543	9505	N	FNEE	47,610.31	59,512.89	71,415.46	16.35	20.44	24.52
FIREFIGHTER/ PARAMEDIC*	10093	9507	N	FNEP	55,727.82	69,659.74	83,591.66	19.14	23.92	28.71
FIREFIGHTER/ PARAMEDIC*	10094	9507	N	FNEP	55,727.82	69,659.74	83,591.66	19.14	23.92	28.71
FIREFIGHTER/ PARAMEDIC*	10095	9507	N	FNEP	55,727.82	69,659.74	83,591.66	19.14	23.92	28.71
FIREFIGHTER/ PARAMEDIC*	10096	9507	N	FNEP	55,727.82	69,659.74	83,591.66	19.14	23.92	28.71
FIREFIGHTER/ PARAMEDIC*	10097	9507	N	FNEP	55,727.82	69,659.74	83,591.66	19.14	23.92	28.71
FIREFIGHTER/ PARAMEDIC*	10098	9507	N	FNEP	55,727.82	69,659.74	83,591.66	19.14	23.92	28.71
FIREFIGHTER/ PARAMEDIC*	10099	9507	N	FNEP	55,727.82	69,659.74	83,591.66	19.14	23.92	28.71
FIREFIGHTER/ PARAMEDIC*	10100	9507	N	FNEP	55,727.82	69,659.74	83,591.66	19.14	23.92	28.71
FIREFIGHTER/ PARAMEDIC*	10101	9507	N	FNEP	55,727.82	69,659.74	83,591.66	19.14	23.92	28.71
FIREFIGHTER/ PARAMEDIC*	10102	9507	N	FNEP	55,727.82	69,659.74	83,591.66	19.14	23.92	28.71
FIREFIGHTER/ PARAMEDIC*	10104	9507	N	FNEP	55,727.82	69,659.74	83,591.66	19.14	23.92	28.71
FIREFIGHTER/ PARAMEDIC*	10105	9507	N	FNEP	55,727.82	69,659.74	83,591.66	19.14	23.92	28.71
FIREFIGHTER/ PARAMEDIC*	10106	9507	N	FNEP	55,727.82	69,659.74	83,591.66	19.14	23.92	28.71
FIREFIGHTER/ PARAMEDIC*	10108	9507	N	FNEP	55,727.82	69,659.74	83,591.66	19.14	23.92	28.71
FIREFIGHTER/ PARAMEDIC*	10109	9507	N	FNEP	55,727.82	69,659.74	83,591.66	19.14	23.92	28.71
FIREFIGHTER/ PARAMEDIC*	10110	9507	N	FNEP	55,727.82	69,659.74	83,591.66	19.14	23.92	28.71
FIREFIGHTER/ PARAMEDIC*	10111	9507	N	FNEP	55,727.82	69,659.74	83,591.66	19.14	23.92	28.71
FIREFIGHTER/ PARAMEDIC*	10112	9507	N	FNEP	55,727.82	69,659.74	83,591.66	19.14	23.92	28.71
FIREFIGHTER/ PARAMEDIC*	10113	9507	N	FNEP	55,727.82	69,659.74	83,591.66	19.14	23.92	28.71
FIREFIGHTER/ PARAMEDIC*	10116	9507	N	FNEP	55,727.82	69,659.74	83,591.66	19.14	23.92	28.71
FIREFIGHTER/ PARAMEDIC*	10117	9507	N	FNEP	55,727.82	69,659.74	83,591.66	19.14	23.92	28.71
FIREFIGHTER/ PARAMEDIC*	10118	9507	N	FNEP	55,727.82	69,659.74	83,591.66	19.14	23.92	28.71
FIREFIGHTER/ PARAMEDIC*	10120	9507	N	FNEP	55,727.82	69,659.74	83,591.66	19.14	23.92	28.71
FIREFIGHTER/ PARAMEDIC*	10121	9507	N	FNEP	55,727.82	69,659.74	83,591.66	19.14	23.92	28.71
FIREFIGHTER/ PARAMEDIC*	10438	9507	N	FNEP	55,727.82	69,659.74	83,591.66	19.14	23.92	28.71
FIREFIGHTER/ PARAMEDIC*	10439	9507	N	FNEP	55,727.82	69,659.74	83,591.66	19.14	23.92	28.71
FIREFIGHTER/ PARAMEDIC*	10532	9507	N	FNEP	55,727.82	69,659.74	83,591.66	19.14	23.92	28.71
FIRE LIEUTENANT*	10081	9100	N	FNEU	65,702.59	78,843.11	91,983.63	22.56	27.08	31.59
FIRE LIEUTENANT*	10082	9100	N	FNEU	65,702.59	78,843.11	91,983.63	22.56	27.08	31.59
FIRE LIEUTENANT*	10083	9100	N	FNEU	65,702.59	78,843.11	91,983.63	22.56	27.08	31.59
FIRE LIEUTENANT*	10084	9100	N	FNEU	65,702.59	78,843.11	91,983.63	22.56	27.08	31.59
FIRE LIEUTENANT*	10085	9100	N	FNEU	65,702.59	78,843.11	91,983.63	22.56	27.08	31.59
FIRE LIEUTENANT*	10086	9100	N	FNEU	65,702.59	78,843.11	91,983.63	22.56	27.08	31.59
FIRE LIEUTENANT*	10087	9100	N	FNEU	65,702.59	78,843.11	91,983.63	22.56	27.08	31.59
FIRE LIEUTENANT*	10088	9100	N	FNEU	65,702.59	78,843.11	91,983.63	22.56	27.08	31.59
FIRE LIEUTENANT*	10089	9100	N	FNEU	65,702.59	78,843.11	91,983.63	22.56	27.08	31.59
FIRE LIEUTENANT*	10090	9100	N	FNEU	65,702.59	78,843.11	91,983.63	22.56	27.08	31.59
FIRE LIEUTENANT*	10091	9100	N	FNEU	65,702.59	78,843.11	91,983.63	22.56	27.08	31.59
FIRE LIEUTENANT*	10092	9100	N	FNEU	65,702.59	78,843.11	91,983.63	22.56	27.08	31.59

* Annual Salary based on 2912 hours

39

City of Dunedin
FY 24 Pay Plan
Positions in Alphabetical Order

Position Desc	Position #	Job Class	Exempt/Non	Grade	Annual Salary Range			Hourly Range		
					Min Pay	Mid Pay	Max Pay	Hrly Min	Hrly Mid	Hrly Max
ACCOUNTANT/ FINANCIAL ANALYST	10658	5000	E	A54E	50,564.80	60,673.60	70,782.40	24.31	29.17	34.03
ACCOUNTING MANAGER	10024	4000	E	A60E	87,942.40	109,928.00	131,913.60	42.28	52.85	63.42
ACCOUNTING SPECIALIST	10546	5000	E	A52E	41,787.20	50,148.80	58,510.40	20.09	24.11	28.13
ACCOUNTS TECHNICIAN	10031	5100	N	A52H	41,787.20	50,148.80	58,510.40	20.09	24.11	28.13
ACCOUNTS TECHNICIAN	10032	5100	N	A52H	41,787.20	50,148.80	58,510.40	20.09	24.11	28.13
ADMINISTRATIVE ASSISTANT - HR	10525	5100	N	A50H	36,046.40	41,454.40	46,862.40	17.33	19.93	22.53
ADMINISTRATIVE ASSISTANT - COMMUNITY DEV	10655	5100	N	A50H	36,046.40	41,454.40	46,862.40	17.33	19.93	22.53
ADMINISTRATIVE ASSISTANT - ENG	10524	5100	N	A50H	36,046.40	41,454.40	46,862.40	17.33	19.93	22.53
ADMINISTRATIVE ASSISTANT - GOLF COURSE	10667	5100	N	A50H	36,046.40	41,454.40	46,862.40	17.33	19.93	22.53
ADMINISTRATIVE COORDINATOR - FINANCE	10030	5100	N	A52H	41,787.20	50,148.80	58,510.40	20.09	24.11	28.13
ADMINISTRATIVE COORDINATOR - FIRE	10080	5100	N	A52H	41,787.20	50,148.80	58,510.40	20.09	24.11	28.13
ADMINISTRATIVE COORDINATOR - LIBRARY	10127	5100	N	A52H	41,787.20	50,148.80	58,510.40	20.09	24.11	28.13
ADMINISTRATIVE COORDINATOR - PARKS & REC	10502	5100	N	A52H	41,787.20	50,148.80	58,510.40	20.09	24.11	28.13
ADMINISTRATIVE COORDINATOR - PUB SERVICES	10363	5100	N	A52H	41,787.20	50,148.80	58,510.40	20.09	24.11	28.13
ADMINISTRATIVE COORDINATOR - WW	10578	5100	N	A52H	41,787.20	50,148.80	58,510.40	20.09	24.11	28.13
ASSIST DIR OF COMMUNITY DEVELOPMENT	10045	4000	E	A61E	98,945.60	123,687.20	148,428.80	47.57	59.47	71.36
ASSIST DIR OF PUBLIC WORKS	10584	4000	E	A61E	98,945.60	123,687.20	148,428.80	47.57	59.47	71.36
ASSIST DIR OF UTILITIES/ CITY ENGINEER	10536	4000	E	A61E	98,945.60	123,687.20	148,428.80	47.57	59.47	71.36
ASSISTANT GOLF PROFESSIONAL	10669	4510	N	A53H	45,968.00	55,161.60	64,355.20	22.10	26.52	30.94
ASSISTANT LIBRARY DIRECTOR	10563	4000	E	A58E	74,027.20	88,836.80	103,646.40	35.59	42.71	49.83
BUDGET MANAGER	10025	4000	E	A60E	87,942.40	109,928.00	131,913.60	42.28	52.85	63.42
BUDGET/ FINANCIAL ANALYST	10028	5000	E	A54E	50,564.80	60,673.60	70,782.40	24.31	29.17	34.03
BUILDING INSPECTOR	10552	5100	N	A54H	50,564.80	60,673.60	70,782.40	24.31	29.17	34.03
BUILDING INSPECTOR	10553	5100	N	A54H	50,564.80	60,673.60	70,782.40	24.31	29.17	34.03
BUSINESS ANALYST	10676	5000	E	A54E	50,564.80	60,673.60	70,782.40	24.31	29.17	34.03
BUSINESS MANAGER	10048	4000	E	A56E	61,193.60	73,434.40	85,675.20	29.42	35.31	41.19
BUYER	10582	5000	E	A54E	50,564.80	60,673.60	70,782.40	24.31	29.17	34.03
CAD/GIS SYSTEMS ADMINISTRATOR	10226	5000	E	A57E	67,308.80	80,766.40	94,224.00	32.36	38.83	45.30
CART/ RANGE ATTENDANT	10671	5100	N	A48H	31,200.00	35,880.00	40,560.00	15.00	17.25	19.50
CART/ RANGE ATTENDANT	10672	5100	N	A48H	31,200.00	35,880.00	40,560.00	15.00	17.25	19.50
CART/ RANGE ATTENDANT (PT 40 HR)	10673	5200	N	P48H	15,600.00	17,940.00	20,280.00	15.00	17.25	19.50
CHIEF BUILDING INSPECTOR/PLANS EXAMINER	10516	4000	E	A58E	74,027.20	88,836.80	103,646.40	35.59	42.71	49.83
CITY ARBORIST	10191	4500	E	A57E	67,308.80	80,766.40	94,224.00	32.36	38.83	45.30
CITY CLERK	10005	2100	E	A62E	111,300.80	139,131.20	166,961.60	53.51	66.89	80.27
CITY MANAGER	10000	2000	E	A65E	173,388.80	225,409.60	277,430.40	83.36	108.37	133.38
CODE COMPLIANCE INSPECTOR	10054	5100	N	A54H	50,564.80	60,673.60	70,782.40	24.31	29.17	34.03
CODE COMPLIANCE INSPECTOR	10055	5100	N	A54H	50,564.80	60,673.60	70,782.40	24.31	29.17	34.03
CODE COMPLIANCE SUPERVISOR	10475	4500	E	A56E	61,193.60	73,434.40	85,675.20	29.42	35.31	41.19
COMMISSIONER	10012	1110	E	C06E	11,500.00	11,500.00	11,500.00	11.06	11.06	11.06
COMMISSIONER	10013	1110	E	C06E	11,500.00	11,500.00	11,500.00	11.06	11.06	11.06
COMMISSIONER	10014	1110	E	C06E	11,500.00	11,500.00	11,500.00	11.06	11.06	11.06
COMMISSIONER	10015	1110	E	C06E	11,500.00	11,500.00	11,500.00	11.06	11.06	11.06
COMMUNITY DEV PROJECT MANAGER	10504	5000	E	A58E	74,027.20	88,836.80	103,646.40	35.59	42.71	49.83
COMMUNITY DEVELOPMENT TECHNICIAN	10057	5100	N	A52H	41,787.20	50,148.80	58,510.40	20.09	24.11	28.13
COMMUNITY DEVELOPMENT TECHNICIAN	10058	5100	N	A52H	41,787.20	50,148.80	58,510.40	20.09	24.11	28.13
COMMUNITY DEVELOPMENT TECHNICIAN	10059	5100	N	A52H	41,787.20	50,148.80	58,510.40	20.09	24.11	28.13
CRAFTSWORKER I	10361	5100	N	A50H	36,046.40	41,454.40	46,862.40	17.33	19.93	22.53
CRAFTSWORKER I	10362	5100	N	A50H	36,046.40	41,454.40	46,862.40	17.33	19.93	22.53
CRAFTSWORKER II	10358	5100	N	A51H	38,001.60	45,604.00	53,206.40	18.27	21.93	25.58
CRAFTSWORKER II	10359	5100	N	A51H	38,001.60	45,604.00	53,206.40	18.27	21.93	25.58
CRAFTSWORKER II	10360	5100	N	A51H	38,001.60	45,604.00	53,206.40	18.27	21.93	25.58
CRAFTSWORKER II	10675	5100	N	A51H	38,001.60	45,604.00	53,206.40	18.27	21.93	25.58

40

City of Dunedin
FY 24 Pay Plan
Positions in Alphabetical Order

Position Desc	Position #	Job Class	Exempt/Non	Grade	Annual Salary Range			Hourly Range		
					Min Pay	Mid Pay	Max Pay	Hrly Min	Hrly Mid	Hrly Max
CRAFTSWORKER III - HVAC	10357	5100	N	A52H	41,787.20	50,148.80	58,510.40	20.09	24.11	28.13
CUSTODIAL SERVICES COORDINATOR	10364	5100	N	A52H	41,787.20	50,148.80	58,510.40	20.09	24.11	28.13
DEPUTY CHIEF/ FIRE MARSHAL	10477	9200	E	F61E	98,945.60	123,687.20	148,428.80	47.57	59.47	71.36
DEPUTY CITY CLERK	10006	4000	E	A56E	61,193.60	73,434.40	85,675.20	29.42	35.31	41.19
DEPUTY CITY MANAGER	10001	3000	E	A64E	144,476.80	187,824.00	231,171.20	69.46	90.30	111.14
DEPUTY FIRE MARSHAL	10554	9200	E	F58E	74,027.20	88,836.80	103,646.40	35.59	42.71	49.83
DIR OF COMMUNICATIONS	10483	3000	E	A62E	111,300.80	139,131.20	166,961.60	53.51	66.89	80.27
DIR OF COMMUNITY DEVELOPMENT	10044	3000	E	A62E	111,300.80	139,131.20	166,961.60	53.51	66.89	80.27
DIR OF ECONOMIC & HOUSING DEVELOPMENT	10062	3000	E	A62E	111,300.80	139,131.20	166,961.60	53.51	66.89	80.27
DIR OF FINANCE	10023	3000	E	A63E	125,216.00	156,520.00	187,824.00	60.20	75.25	90.30
DIR OF HR & RISK MANAGEMENT	10039	3000	E	A62E	111,300.80	139,131.20	166,961.60	53.51	66.89	80.27
DIR OF IT SERVICES	10033	3000	E	A62E	111,300.80	139,131.20	166,961.60	53.51	66.89	80.27
DIR OF PARKS AND RECREATION	10154	3000	E	A62E	111,300.80	139,131.20	166,961.60	53.51	66.89	80.27
DIR OF PUBLIC WORKS	10519	3000	E	A62E	111,300.80	139,131.20	166,961.60	53.51	66.89	80.27
DIR OF UTILITIES & ENGINEERING	10518	3000	E	A62E	111,300.80	139,131.20	166,961.60	53.51	66.89	80.27
DISTRICT CHIEF*	10075	9300	E	F57E	94,232.32	113,072.96	131,913.60	32.36	38.83	45.30
DISTRICT CHIEF*	10076	9300	E	F57E	94,232.32	113,072.96	131,913.60	32.36	38.83	45.30
DISTRICT CHIEF*	10077	9300	E	F57E	94,232.32	113,072.96	131,913.60	32.36	38.83	45.30
DIVISION CHIEF OF EMS	10074	9200	E	F60E	87,942.40	109,928.00	131,913.60	42.28	52.85	63.42
DIVISION CHIEF OF LOGISTICS	10478	9200	E	F60E	87,942.40	109,928.00	131,913.60	42.28	52.85	63.42
DIVISION CHIEF OF TRAINING	10073	9200	E	F60E	87,942.40	109,928.00	131,913.60	42.28	52.85	63.42
ECONOMIC DEVELOPMENT PROJECT MANAGER	10495	4500	E	A56E	61,193.60	73,434.40	85,675.20	29.42	35.31	41.19
ECONOMIC DEVELOPMENT SPECIALIST	10063	5000	E	A54E	50,564.80	60,673.60	70,782.40	24.31	29.17	34.03
ENGINEER I	10557	4500	E	A56E	61,193.60	73,434.40	85,675.20	29.42	35.31	41.19
ENGINEER II	10556	4500	E	A58E	74,027.20	88,836.80	103,646.40	35.59	42.71	49.83
ENGINEER III	10555	4500	E	A60E	87,942.40	109,928.00	131,913.60	42.28	52.85	63.42
ENGINEERING CONTRACTS MANAGER	10539	4500	E	A56E	61,193.60	73,434.40	85,675.20	29.42	35.31	41.19
ENGINEERING DESIGNER	10560	5100	N	A53H	45,968.00	55,161.60	64,355.20	22.10	26.52	30.94
ENGINEERING INSPECTOR	10561	5100	N	A54H	50,564.80	60,673.60	70,782.40	24.31	29.17	34.03
ENGINEERING INSPECTOR	10562	5100	N	A54H	50,564.80	60,673.60	70,782.40	24.31	29.17	34.03
ENGINEERING PROJECT MANAGER	10558	4500	E	A56E	61,193.60	73,434.40	85,675.20	29.42	35.31	41.19
ENVIRONMENTAL PROGRAM MANAGER	10586	4500	E	A56E	61,193.60	73,434.40	85,675.20	29.42	35.31	41.19
ENVIRONMENTAL SPECIALIST I PW - SOLID WASTE	10666	5000	E	A53E	45,968.00	55,161.60	64,355.20	22.10	26.52	30.94
ENVIRONMENTAL SPECIALIST I PW - STORMWATER	10665	5000	E	A53E	45,968.00	55,161.60	64,355.20	22.10	26.52	30.94
EXECUTIVE OFFICE COORDINATOR	10003	4500	E	A56E	61,193.60	73,434.40	85,675.20	29.42	35.31	41.19
FACILITIES FOREMAN	10630	4510	N	A56H	61,193.60	73,434.40	85,675.20	29.42	35.31	41.19
FACILITIES MANAGER	10629	4500	E	A58E	74,027.20	88,836.80	103,646.40	35.59	42.71	49.83
FIELD SERVICE REPRESENTATIVE	10263	5100	N	A49H	33,529.60	38,563.20	43,596.80	16.12	18.54	20.96
FIRE CHIEF	10070	9000	E	F62E	111,300.80	139,131.20	166,961.60	53.51	66.89	80.27
FIRE INSPECTOR	10651	9250	N	F54H	50,564.80	60,673.60	70,782.40	24.31	29.17	34.03
FIRE LIEUTENANT*	10085	9100	N	FNEU	65,702.59	78,843.11	91,983.63	22.56	27.08	31.59
FIRE LIEUTENANT*	10087	9100	N	FNEU	65,702.59	78,843.11	91,983.63	22.56	27.08	31.59
FIRE LIEUTENANT*	10088	9100	N	FNEU	65,702.59	78,843.11	91,983.63	22.56	27.08	31.59
FIRE LIEUTENANT*	10089	9100	N	FNEU	65,702.59	78,843.11	91,983.63	22.56	27.08	31.59
FIRE LIEUTENANT*	10091	9100	N	FNEU	65,702.59	78,843.11	91,983.63	22.56	27.08	31.59
FIRE LIEUTENANT*	10092	9100	N	FNEU	65,702.59	78,843.11	91,983.63	22.56	27.08	31.59
FIRE LIEUTENANT*	10081	9100	N	FNEU	65,702.59	78,843.11	91,983.63	22.56	27.08	31.59
FIRE LIEUTENANT*	10082	9100	N	FNEU	65,702.59	78,843.11	91,983.63	22.56	27.08	31.59
FIRE LIEUTENANT*	10083	9100	N	FNEU	65,702.59	78,843.11	91,983.63	22.56	27.08	31.59
FIRE LIEUTENANT*	10084	9100	N	FNEU	65,702.59	78,843.11	91,983.63	22.56	27.08	31.59
FIRE LIEUTENANT*	10086	9100	N	FNEU	65,702.59	78,843.11	91,983.63	22.56	27.08	31.59
FIRE LIEUTENANT*	10090	9100	N	FNEU	65,702.59	78,843.11	91,983.63	22.56	27.08	31.59
FIREFIGHTER/ EMT*	10122	9505	N	FNEE	47,610.31	59,512.89	71,415.46	16.35	20.44	24.52

17

City of Dunedin
 FY 24 Pay Plan
 Positions in Alphabetical Order

Position Desc	Position #	Job Class	Exempt/Non	Grade	Annual Salary Range			Hourly Range		
					Min Pay	Mid Pay	Max Pay	Hrly Min	Hrly Mid	Hrly Max
FIREFIGHTER/ EMT*	10123	9505	N	FNEE	47,610.31	59,512.89	71,415.46	16.35	20.44	24.52
FIREFIGHTER/ EMT*	10124	9505	N	FNEE	47,610.31	59,512.89	71,415.46	16.35	20.44	24.52
FIREFIGHTER/ EMT*	10125	9505	N	FNEE	47,610.31	59,512.89	71,415.46	16.35	20.44	24.52
FIREFIGHTER/ EMT*	10451	9505	N	FNEE	47,610.31	59,512.89	71,415.46	16.35	20.44	24.52
FIREFIGHTER/ EMT*	10521	9505	N	FNEE	47,610.31	59,512.89	71,415.46	16.35	20.44	24.52
FIREFIGHTER/ EMT*	10522	9505	N	FNEE	47,610.31	59,512.89	71,415.46	16.35	20.44	24.52
FIREFIGHTER/ EMT*	10537	9505	N	FNEE	47,610.31	59,512.89	71,415.46	16.35	20.44	24.52
FIREFIGHTER/ EMT*	10543	9505	N	FNEE	47,610.31	59,512.89	71,415.46	16.35	20.44	24.52
FIREFIGHTER/ PARAMEDIC*	10093	9507	N	FNEP	55,727.82	69,659.74	83,591.66	19.14	23.92	28.71
FIREFIGHTER/ PARAMEDIC*	10094	9507	N	FNEP	55,727.82	69,659.74	83,591.66	19.14	23.92	28.71
FIREFIGHTER/ PARAMEDIC*	10095	9507	N	FNEP	55,727.82	69,659.74	83,591.66	19.14	23.92	28.71
FIREFIGHTER/ PARAMEDIC*	10096	9507	N	FNEP	55,727.82	69,659.74	83,591.66	19.14	23.92	28.71
FIREFIGHTER/ PARAMEDIC*	10098	9507	N	FNEP	55,727.82	69,659.74	83,591.66	19.14	23.92	28.71
FIREFIGHTER/ PARAMEDIC*	10100	9507	N	FNEP	55,727.82	69,659.74	83,591.66	19.14	23.92	28.71
FIREFIGHTER/ PARAMEDIC*	10101	9507	N	FNEP	55,727.82	69,659.74	83,591.66	19.14	23.92	28.71
FIREFIGHTER/ PARAMEDIC*	10102	9507	N	FNEP	55,727.82	69,659.74	83,591.66	19.14	23.92	28.71
FIREFIGHTER/ PARAMEDIC*	10104	9507	N	FNEP	55,727.82	69,659.74	83,591.66	19.14	23.92	28.71
FIREFIGHTER/ PARAMEDIC*	10105	9507	N	FNEP	55,727.82	69,659.74	83,591.66	19.14	23.92	28.71
FIREFIGHTER/ PARAMEDIC*	10109	9507	N	FNEP	55,727.82	69,659.74	83,591.66	19.14	23.92	28.71
FIREFIGHTER/ PARAMEDIC*	10110	9507	N	FNEP	55,727.82	69,659.74	83,591.66	19.14	23.92	28.71
FIREFIGHTER/ PARAMEDIC*	10111	9507	N	FNEP	55,727.82	69,659.74	83,591.66	19.14	23.92	28.71
FIREFIGHTER/ PARAMEDIC*	10112	9507	N	FNEP	55,727.82	69,659.74	83,591.66	19.14	23.92	28.71
FIREFIGHTER/ PARAMEDIC*	10116	9507	N	FNEP	55,727.82	69,659.74	83,591.66	19.14	23.92	28.71
FIREFIGHTER/ PARAMEDIC*	10117	9507	N	FNEP	55,727.82	69,659.74	83,591.66	19.14	23.92	28.71
FIREFIGHTER/ PARAMEDIC*	10120	9507	N	FNEP	55,727.82	69,659.74	83,591.66	19.14	23.92	28.71
FIREFIGHTER/ PARAMEDIC*	10121	9507	N	FNEP	55,727.82	69,659.74	83,591.66	19.14	23.92	28.71
FIREFIGHTER/ PARAMEDIC*	10438	9507	N	FNEP	55,727.82	69,659.74	83,591.66	19.14	23.92	28.71
FIREFIGHTER/ PARAMEDIC*	10439	9507	N	FNEP	55,727.82	69,659.74	83,591.66	19.14	23.92	28.71
FIREFIGHTER/ PARAMEDIC*	10532	9507	N	FNEP	55,727.82	69,659.74	83,591.66	19.14	23.92	28.71
FIREFIGHTER/ PARAMEDIC*	10097	9507	N	FNEP	55,727.82	69,659.74	83,591.66	19.14	23.92	28.71
FIREFIGHTER/ PARAMEDIC*	10099	9507	N	FNEP	55,727.82	69,659.74	83,591.66	19.14	23.92	28.71
FIREFIGHTER/ PARAMEDIC*	10106	9507	N	FNEP	55,727.82	69,659.74	83,591.66	19.14	23.92	28.71
FIREFIGHTER/ PARAMEDIC*	10108	9507	N	FNEP	55,727.82	69,659.74	83,591.66	19.14	23.92	28.71
FIREFIGHTER/ PARAMEDIC*	10113	9507	N	FNEP	55,727.82	69,659.74	83,591.66	19.14	23.92	28.71
FIREFIGHTER/ PARAMEDIC*	10118	9507	N	FNEP	55,727.82	69,659.74	83,591.66	19.14	23.92	28.71
FITNESS PROGRAM COORDINATOR	10569	5100	N	A54H	50,564.80	60,673.60	70,782.40	24.31	29.17	34.03
FLEET ADMINISTRATIVE TECHNICIAN	10494	5100	N	A52H	41,787.20	50,148.80	58,510.40	20.09	24.11	28.13
FLEET FOREMAN	10619	6400	N	A57H	67,308.80	80,766.40	94,224.00	32.36	38.83	45.30
FLEET SERVICES MANAGER	10618	4000	E	A59E	81,432.00	97,718.40	114,004.80	39.15	46.98	54.81
GENERAL MANAGER OF GOLF OPERATIONS	10527	3000	E	A60E	87,942.40	109,928.00	131,913.60	42.28	52.85	63.42
Golf Shop Attendant	10670	5100	N	A50H	36,046.40	41,454.40	46,862.40	17.33	19.93	22.53
HARBORMASTER	10218	4500	E	A57E	67,308.80	80,766.40	94,224.00	32.36	38.83	45.30
HEAD GOLF PROFESSIONAL	10668	4000	E	A56E	61,193.60	73,434.40	85,675.20	29.42	35.31	41.19
HEAD LIFEGUARD	10459	5100	N	A52H	41,787.20	50,148.80	58,510.40	20.09	24.11	28.13
HORTICULTURAL TECHNICIAN	10542	5100	N	A51H	38,001.60	45,604.00	53,206.40	18.27	21.93	25.58
HORTICULTURAL TECHNICIAN	10581	5100	N	A51H	38,001.60	45,604.00	53,206.40	18.27	21.93	25.58
HR/RISK MANAGEMENT ASSISTANT	10515	5100	N	A52H	41,787.20	50,148.80	58,510.40	20.09	24.11	28.13
HR/RISK MANAGEMENT COORDINATOR	10042	5000	E	A55E	55,619.20	66,747.20	77,875.20	26.74	32.09	37.44
HUMAN RESOURCES MANAGER	10540	4000	E	A58E	74,027.20	88,836.80	103,646.40	35.59	42.71	49.83
HYDROGEOLOGIST	10234	5000	E	A57E	67,308.80	80,766.40	94,224.00	32.36	38.83	45.30
IRRIGATION TECHNICIAN	10193	5100	N	A51H	38,001.60	45,604.00	53,206.40	18.27	21.93	25.58
IRRIGATION TECHNICIAN	10194	5100	N	A51H	38,001.60	45,604.00	53,206.40	18.27	21.93	25.58
IT NETWORK ADMINISTRATOR I	10510	5000	E	A56E	61,193.60	73,434.40	85,675.20	29.42	35.31	41.19

42

City of Dunedin
 FY 24 Pay Plan
 Positions in Alphabetical Order

Position Desc	Position #	Job Class	Exempt/Non	Grade	Annual Salary Range			Hourly Range		
					Min Pay	Mid Pay	Max Pay	Hrly Min	Hrly Mid	Hrly Max
IT NETWORK ADMINISTRATOR II	10509	5000	E	A57E	67,308.80	80,766.40	94,224.00	32.36	38.83	45.30
IT SENIOR SYSTEMS ENGINEER	10034	5000	E	A59E	81,432.00	97,718.40	114,004.80	39.15	46.98	54.81
IT SERVICES TECHNICIAN I	10038	5100	N	A52H	41,787.20	50,148.80	58,510.40	20.09	24.11	28.13
IT SERVICES TECHNICIAN II	10480	5100	N	A54H	50,564.80	60,673.60	70,782.40	24.31	29.17	34.03
IT SERVICES TECHNICIAN II	10548	5100	N	A54H	50,564.80	60,673.60	70,782.40	24.31	29.17	34.03
LEAD CRAFTSWORKER	10355	4510	N	A54H	50,564.80	60,673.60	70,782.40	24.31	29.17	34.03
LEAD CRAFTSWORKER	10356	4510	N	A54H	50,564.80	60,673.60	70,782.40	24.31	29.17	34.03
LEAD CRAFTSWORKER	10674	4510	N	A54H	50,564.80	60,673.60	70,782.40	24.31	29.17	34.03
LEAD MECHANIC	10335	6500	N	A55H	55,619.20	66,747.20	77,875.20	26.74	32.09	37.44
LEAD SANITATION ASSOCIATE	10602	5100	N	A53H	45,968.00	55,161.60	64,355.20	22.10	26.52	30.94
LEAD WATER PLANT OPERATOR	10238	6000	N	A55H	55,619.20	66,747.20	77,875.20	26.74	32.09	37.44
LEAD WATER PLANT OPERATOR	10240	6000	N	A55H	55,619.20	66,747.20	77,875.20	26.74	32.09	37.44
LEAD WW PLANT OPERATOR	10266	4510	N	A55H	55,619.20	66,747.20	77,875.20	26.74	32.09	37.44
LEAD WW PLANT OPERATOR	10267	4510	N	A55H	55,619.20	66,747.20	77,875.20	26.74	32.09	37.44
LEAD WW PLANT OPERATOR	10268	4510	N	A55H	55,619.20	66,747.20	77,875.20	26.74	32.09	37.44
LIBRARIAN	10132	5100	N	A53H	45,968.00	55,161.60	64,355.20	22.10	26.52	30.94
LIBRARIAN	10133	5100	N	A53H	45,968.00	55,161.60	64,355.20	22.10	26.52	30.94
LIBRARIAN	10134	5100	N	A53H	45,968.00	55,161.60	64,355.20	22.10	26.52	30.94
LIBRARIAN	10135	5100	N	A53H	45,968.00	55,161.60	64,355.20	22.10	26.52	30.94
LIBRARIAN	10136	5100	N	A53H	36,865.92	47,925.67	58,985.42	17.72	23.04	28.36
LIBRARIAN	10513	5100	N	A53H	45,968.00	55,161.60	64,355.20	22.10	26.52	30.94
LIBRARIAN (PT 40 HR)	10137	5200	N	P53H	22,984.00	27,580.80	32,177.60	22.10	26.52	30.94
LIBRARIAN (PT 40 HR)	10544	5200	N	P53H	22,984.00	27,580.80	32,177.60	22.10	26.52	30.94
LIBRARIAN (PT 56 HR)	10138	5200	N	P53H	32,177.60	38,613.12	45,048.64	22.10	26.52	30.94
LIBRARY AIDE (PT 40 HR)	10152	5200	N	P48H	15,600.00	17,940.00	20,280.00	15.00	17.25	19.50
LIBRARY AIDE (PT 40 HR)	10153	5200	N	P48H	15,600.00	17,940.00	20,280.00	15.00	17.25	19.50
LIBRARY ASSISTANT	10146	5100	N	A49H	33,529.60	38,563.20	43,596.80	16.12	18.54	20.96
LIBRARY ASSISTANT	10147	5100	N	A49H	33,529.60	38,563.20	43,596.80	16.12	18.54	20.96
LIBRARY ASSISTANT	10150	5100	N	A49H	33,529.60	38,563.20	43,596.80	16.12	18.54	20.96
LIBRARY ASSISTANT	10151	5100	N	A49H	33,529.60	38,563.20	43,596.80	16.12	18.54	20.96
LIBRARY ASSISTANT (PT 40 HR)	10463	5200	N	P49H	16,764.80	19,281.60	21,798.40	16.12	18.54	20.96
LIBRARY ASSISTANT (PT 40 HR)	10464	5200	N	P49H	16,764.80	19,281.60	21,798.40	16.12	18.54	20.96
LIBRARY DIRECTOR	10126	3000	E	A62E	111,300.80	139,131.20	166,961.60	53.51	66.89	80.27
LIBRARY MANAGER	10564	4500	E	A56E	61,193.60	73,434.40	85,675.20	29.42	35.31	41.19
LIBRARY MANAGER	10565	4500	E	A56E	61,193.60	73,434.40	85,675.20	29.42	35.31	41.19
MARINE MAINT TECHNICIAN	10219	5100	N	A51H	38,001.60	45,604.00	53,206.40	18.27	21.93	25.58
MAYOR	10011	1110	E	C06E	15,000.00	15,000.00	15,000.00	14.42	14.42	14.42
MECHANIC	10337	6600	N	A52H	41,787.20	50,148.80	58,510.40	20.09	24.11	28.13
MECHANIC	10338	6600	N	A52H	41,787.20	50,148.80	58,510.40	20.09	24.11	28.13
MECHANIC	10339	6600	N	A52H	41,787.20	50,148.80	58,510.40	20.09	24.11	28.13
MECHANIC	10340	6600	N	A52H	41,787.20	50,148.80	58,510.40	20.09	24.11	28.13
MECHANIC	10528	6600	N	A52H	41,787.20	50,148.80	58,510.40	20.09	24.11	28.13
MULTIMEDIA PUBLIC INFORMATION COORDINATOR	10526	5000	E	A54E	50,564.80	60,673.60	70,782.40	24.31	29.17	34.03
PARK ATTENDANT (PT 40 HR)	10636	5200	N	P48H	15,600.00	17,940.00	20,280.00	15.00	17.25	19.50
PARK ATTENDANT (PT 40 HR)	10637	5200	N	P48H	15,600.00	17,940.00	20,280.00	15.00	17.25	19.50
PARK ATTENDANT (PT 40 HR)	10638	5200	N	P48H	15,600.00	17,940.00	20,280.00	15.00	17.25	19.50
PARK ATTENDANT (PT 40 HR)	10639	5200	N	P48H	15,600.00	17,940.00	20,280.00	15.00	17.25	19.50
PARK ATTENDANT (PT 40 HR)	10640	5200	N	P48H	15,600.00	17,940.00	20,280.00	15.00	17.25	19.50
PARK ATTENDANT (PT 50 HR)	10631	5200	N	P48H	19,500.00	22,425.00	25,350.00	15.00	17.25	19.50
PARK ATTENDANT (PT 50 HR)	10632	5200	N	P48H	19,500.00	22,425.00	25,350.00	15.00	17.25	19.50
PARK ATTENDANT (PT 50 HR)	10633	5200	N	P48H	19,500.00	22,425.00	25,350.00	15.00	17.25	19.50
PARK ATTENDANT (PT 50 HR)	10634	5200	N	P48H	19,500.00	22,425.00	25,350.00	15.00	17.25	19.50
PARK ATTENDANT (PT 50 HR)	10635	5200	N	P48H	19,500.00	22,425.00	25,350.00	15.00	17.25	19.50

43

City of Dunedin
FY 24 Pay Plan
Positions in Alphabetical Order

Position Desc	Position #	Job Class	Exempt/Non	Grade	Annual Salary Range			Hourly Range		
					Min Pay	Mid Pay	Max Pay	Hrly Min	Hrly Mid	Hrly Max
PARK ATTENDANT III	10462	5100	N	A51H	38,001.60	45,604.00	53,206.40	18.27	21.93	25.58
PARKS & REC ADMIN SUPERINTENDENT	10156	4000	E	A60E	87,942.40	109,928.00	131,913.60	42.28	52.85	63.42
PARKS & REC SUPERINTENDENT	10485	4000	E	A60E	87,942.40	109,928.00	131,913.60	42.28	52.85	63.42
PARKS MAINT SUPERVISOR	10185	4500	E	A58E	74,027.20	88,836.80	103,646.40	35.59	42.71	49.83
PARKS MAINT WORKER I	10206	5100	N	A48H	31,200.00	35,880.00	40,560.00	15.00	17.25	19.50
PARKS MAINT WORKER I	10207	5100	N	A48H	31,200.00	35,880.00	40,560.00	15.00	17.25	19.50
PARKS MAINT WORKER I	10208	5100	N	A48H	31,200.00	35,880.00	40,560.00	15.00	17.25	19.50
PARKS MAINT WORKER I	10209	5100	N	A48H	31,200.00	35,880.00	40,560.00	15.00	17.25	19.50
PARKS MAINT WORKER I	10210	5100	N	A48H	31,200.00	35,880.00	40,560.00	15.00	17.25	19.50
PARKS MAINT WORKER I	10211	5100	N	A48H	31,200.00	35,880.00	40,560.00	15.00	17.25	19.50
PARKS MAINT WORKER I	10212	5100	N	A48H	31,200.00	35,880.00	40,560.00	15.00	17.25	19.50
PARKS MAINT WORKER I	10213	5100	N	A48H	31,200.00	35,880.00	40,560.00	15.00	17.25	19.50
PARKS MAINT WORKER I (PT 48 HR)	10214	5200	N	P48H	18,720.00	21,528.00	24,336.00	15.00	17.25	19.50
PARKS MAINT WORKER I (PT 48 HR)	10215	5200	N	P48H	18,720.00	21,528.00	24,336.00	15.00	17.25	19.50
PARKS MAINT WORKER I (PT 48 HR)	10216	5200	N	P48H	18,720.00	21,528.00	24,336.00	15.00	17.25	19.50
PARKS MAINT WORKER II	10200	5100	N	A49H	33,529.60	38,563.20	43,596.80	16.12	18.54	20.96
PARKS MAINT WORKER II	10201	5100	N	A49H	33,529.60	38,563.20	43,596.80	16.12	18.54	20.96
PARKS MAINT WORKER II	10202	5100	N	A49H	33,529.60	38,563.20	43,596.80	16.12	18.54	20.96
PARKS MAINT WORKER II	10203	5100	N	A49H	33,529.60	38,563.20	43,596.80	16.12	18.54	20.96
PARKS MAINT WORKER II	10204	5100	N	A49H	33,529.60	38,563.20	43,596.80	16.12	18.54	20.96
PARKS MAINT WORKER III	10195	5100	N	A50H	36,046.40	41,454.40	46,862.40	17.33	19.93	22.53
PARKS MAINT WORKER III	10196	5100	N	A50H	36,046.40	41,454.40	46,862.40	17.33	19.93	22.53
PARKS MAINT WORKER III	10197	5100	N	A50H	36,046.40	41,454.40	46,862.40	17.33	19.93	22.53
PARKS MAINT WORKER III	10198	5100	N	A50H	36,046.40	41,454.40	46,862.40	17.33	19.93	22.53
PARKS MAINT WORKER III	10199	5100	N	A50H	36,046.40	41,454.40	46,862.40	17.33	19.93	22.53
PARKS MAINTENANCE FOREMAN	10659	4510	N	A55H	55,619.20	66,747.20	77,875.20	26.74	32.09	37.44
PARKS MAINTENANCE FOREMAN	10660	4510	N	A55H	55,619.20	66,747.20	77,875.20	26.74	32.09	37.44
PARKS MAINTENANCE FOREMAN	10661	4510	N	A55H	55,619.20	66,747.20	77,875.20	26.74	32.09	37.44
PARKS MAINTENANCE FOREMAN	10662	4510	N	A55H	55,619.20	66,747.20	77,875.20	26.74	32.09	37.44
PARKS MAINTENANCE FOREMAN	10663	4510	N	A55H	55,619.20	66,747.20	77,875.20	26.74	32.09	37.44
PLANNER I	10486	5000	E	A54E	50,564.80	60,673.60	70,782.40	24.31	29.17	34.03
PLANNER II	10046	5000	E	A56E	61,193.60	73,434.40	85,675.20	29.42	35.31	41.19
PLANS REVIEWER	10559	5000	E	A55E	55,619.20	66,747.20	77,875.20	26.74	32.09	37.44
PUBLIC SERVICES CREW CHIEF - 5300	10587	5100	N	A53H	45,968.00	55,161.60	64,355.20	22.10	26.52	30.94
PUBLIC SERVICES CREW CHIEF - 5300	10588	5100	N	A53H	45,968.00	55,161.60	64,355.20	22.10	26.52	30.94
PUBLIC SERVICES CREW CHIEF - 6300	10620	5100	N	A53H	45,968.00	55,161.60	64,355.20	22.10	26.52	30.94
PUBLIC SERVICES CREW CHIEF - 6300	10621	5100	N	A53H	45,968.00	55,161.60	64,355.20	22.10	26.52	30.94
PUBLIC SERVICES FOREMAN	10301	4510	N	A54H	50,564.80	60,673.60	70,782.40	24.31	29.17	34.03
PUBLIC SERVICES MAIN ASSOC I - 5300	10592	5100	N	A48H	31,200.00	35,880.00	40,560.00	15.00	17.25	19.50
PUBLIC SERVICES MAIN ASSOC I - 5300	10593	5100	N	A48H	31,200.00	35,880.00	40,560.00	15.00	17.25	19.50
PUBLIC SERVICES MAIN ASSOC I - 5300	10594	5100	N	A48H	31,200.00	35,880.00	40,560.00	15.00	17.25	19.50
PUBLIC SERVICES MAIN ASSOC I - 5300	10595	5100	N	A48H	31,200.00	35,880.00	40,560.00	15.00	17.25	19.50
PUBLIC SERVICES MAIN ASSOC I - 5300	10596	5100	N	A48H	31,200.00	35,880.00	40,560.00	15.00	17.25	19.50
PUBLIC SERVICES MAIN ASSOC I - 5300	10597	5100	N	A48H	31,200.00	35,880.00	40,560.00	15.00	17.25	19.50
PUBLIC SERVICES MAINT ASSOC I - 6300	10626	5100	N	A48H	31,200.00	35,880.00	40,560.00	15.00	17.25	19.50
PUBLIC SERVICES MAINT ASSOC I - 6300	10627	5100	N	A48H	31,200.00	35,880.00	40,560.00	15.00	17.25	19.50
PUBLIC SERVICES MAINT ASSOC I - 6300	10628	5100	N	A48H	31,200.00	35,880.00	40,560.00	15.00	17.25	19.50
PUBLIC SERVICES MAINT ASSOC II - 5300	10590	5100	N	A49H	33,529.60	38,563.20	43,596.80	16.12	18.54	20.96
PUBLIC SERVICES MAINT ASSOC II - 5300	10591	5100	N	A49H	33,529.60	38,563.20	43,596.80	16.12	18.54	20.96
PUBLIC SERVICES MAINT ASSOC II - 6300	10623	5100	N	A49H	33,529.60	38,563.20	43,596.80	16.12	18.54	20.96
PUBLIC SERVICES MAINT ASSOC II - 6300	10624	5100	N	A49H	33,529.60	38,563.20	43,596.80	16.12	18.54	20.96
PUBLIC SERVICES MAINT ASSOC II - 6300	10625	5100	N	A49H	33,529.60	38,563.20	43,596.80	16.12	18.54	20.96
PUBLIC SERVICES MAINT ASSOC III - 5300	10589	5100	N	A50H	36,046.40	41,454.40	46,862.40	17.33	19.93	22.53

177

City of Dunedin
FY 24 Pay Plan
Positions in Alphabetical Order

Position Desc	Position #	Job Class	Exempt/Non	Grade	Annual Salary Range			Hourly Range		
					Min Pay	Mid Pay	Max Pay	Hrly Min	Hrly Mid	Hrly Max
PUBLIC SERVICES MAINT ASSOC III - 6300	10622	5100	N	A50H	36,046.40	41,454.40	46,862.40	17.33	19.93	22.53
PUBLIC SERVICES MANAGER	10585	4000	E	A58E	74,027.20	88,836.80	103,646.40	35.59	42.71	49.83
PURCHASING AGENT	10027	5000	E	A57E	67,308.80	80,766.40	94,224.00	32.36	38.83	45.30
RECORDS MANAGEMENT SPECIALIST	10007	5100	N	A52H	41,787.20	50,148.80	58,510.40	20.09	24.11	28.13
RECREATION LEADER I - 4250 (PT 50 HR)	10648	5200	N	P48H	19,500.00	22,425.00	25,350.00	15.00	17.25	19.50
RECREATION LEADER I - 4253 (PT 40 HR)	10641	5200	N	P48H	15,600.00	17,940.00	20,280.00	15.00	17.25	19.50
RECREATION LEADER I - 4253 (PT 40 HR)	10642	5200	N	P48H	15,600.00	17,940.00	20,280.00	15.00	17.25	19.50
RECREATION LEADER I - 4260 (PT 40 HR)	10643	5200	N	P48H	15,600.00	17,940.00	20,280.00	15.00	17.25	19.50
RECREATION LEADER I - 4260 (PT 40 HR)	10644	5200	N	P48H	15,600.00	17,940.00	20,280.00	15.00	17.25	19.50
RECREATION LEADER I - 4260 (PT 40 HR)	10645	5200	N	P48H	15,600.00	17,940.00	20,280.00	15.00	17.25	19.50
RECREATION LEADER I - 4260 (PT 40 HR)	10646	5200	N	P48H	15,600.00	17,940.00	20,280.00	15.00	17.25	19.50
RECREATION LEADER I - 4260 (PT 50 HR)	10647	5200	N	P48H	19,500.00	22,425.00	25,350.00	15.00	17.25	19.50
RECREATION LEADER I - 4260 (PT 50 HR)	10650	5200	N	P48H	19,500.00	22,425.00	25,350.00	15.00	17.25	19.50
RECREATION LEADER I SMIC - 4260 (PT 40HR)	10654	5200	N	P49H	16,764.80	19,281.60	21,798.40	16.12	18.54	20.96
RECREATION LEADER II - 4252	10177	5100	N	A50H	36,046.40	41,454.40	46,862.40	17.33	19.93	22.53
RECREATION LEADER II - 4252	10180	5100	N	A50H	36,046.40	41,454.40	46,862.40	17.33	19.93	22.53
RECREATION LEADER II - 4252	10181	5100	N	A50H	36,046.40	41,454.40	46,862.40	17.33	19.93	22.53
RECREATION LEADER II - 4253	10175	5100	N	A50H	36,046.40	41,454.40	46,862.40	17.33	19.93	22.53
RECREATION LEADER II - 4254	10174	5100	N	A50H	36,046.40	41,454.40	46,862.40	17.33	19.93	22.53
RECREATION LEADER II - 4254	10182	5100	N	A50H	36,046.40	41,454.40	46,862.40	17.33	19.93	22.53
RECREATION LEADER II - 4260	10184	5100	N	A50H	36,046.40	41,454.40	46,862.40	17.33	19.93	22.53
RECREATION LEADER III - 4252	10167	5100	N	A51H	38,001.60	45,604.00	53,206.40	18.27	21.93	25.58
RECREATION LEADER III - 4252	10472	5100	N	A51H	38,001.60	45,604.00	53,206.40	18.27	21.93	25.58
RECREATION LEADER III - 4253	10169	5100	N	A51H	38,001.60	45,604.00	53,206.40	18.27	21.93	25.58
RECREATION LEADER III - 4253	10170	5100	N	A51H	38,001.60	45,604.00	53,206.40	18.27	21.93	25.58
RECREATION LEADER III - 4254	10168	5100	N	A51H	38,001.60	45,604.00	53,206.40	18.27	21.93	25.58
RECREATION LEADER III - 4258	10172	5100	N	A51H	38,001.60	45,604.00	53,206.40	18.27	21.93	25.58
RECREATION LEADER III BASP SUPERVISOR	10571	4510	N	A52H	41,787.20	50,148.80	58,510.40	20.09	24.11	28.13
RECREATION LEADER III BASP SUPERVISOR	10572	4510	N	A52H	41,787.20	50,148.80	58,510.40	20.09	24.11	28.13
RECREATION LEADER III BASP SUPERVISOR	10573	4510	N	A52H	41,787.20	50,148.80	58,510.40	20.09	24.11	28.13
RECREATION MARKETING COORDINATOR	10574	4500	E	A56E	61,193.60	73,434.40	85,675.20	29.42	35.31	41.19
RECREATION PROGRAM COORDINATOR - 4250	10161	4500	E	A57E	67,308.80	80,766.40	94,224.00	32.36	38.83	45.30
RECREATION PROGRAM COORDINATOR - 4251	10498	4500	E	A57E	67,308.80	80,766.40	94,224.00	32.36	38.83	45.30
RECREATION PROGRAM COORDINATOR - 4252	10162	4500	E	A57E	67,308.80	80,766.40	94,224.00	32.36	38.83	45.30
RECREATION PROGRAM COORDINATOR - 4253	10163	4500	E	A57E	67,308.80	80,766.40	94,224.00	32.36	38.83	45.30
RECREATION PROGRAM COORDINATOR - 4254	10160	4500	E	A57E	67,308.80	80,766.40	94,224.00	32.36	38.83	45.30
RECREATION PROGRAM COORDINATOR - 4260	10677	4500	E	A57E	67,308.80	80,766.40	94,224.00	32.36	38.83	45.30
RECREATION TECHNICIAN	10173	5100	N	A52H	41,787.20	50,148.80	58,510.40	20.09	24.11	28.13
SANITATION & RECYCLING SUPERINTENDENT	10598	4000	E	A60E	87,942.40	109,928.00	131,913.60	42.28	52.85	63.42
SANITATION ASSOCIATE I - 5430	10610	5100	N	A50H	36,046.40	41,454.40	46,862.40	17.33	19.93	22.53
SANITATION ASSOCIATE I - 5430	10611	5100	N	A50H	36,046.40	41,454.40	46,862.40	17.33	19.93	22.53
SANITATION ASSOCIATE I - 5430	10612	5100	N	A50H	36,046.40	41,454.40	46,862.40	17.33	19.93	22.53
SANITATION ASSOCIATE I - 5431	10616	5100	N	A50H	36,046.40	41,454.40	46,862.40	17.33	19.93	22.53
SANITATION ASSOCIATE I - 5431	10617	5100	N	A50H	36,046.40	41,454.40	46,862.40	17.33	19.93	22.53
SANITATION ASSOCIATE II - 5430	10604	5100	N	A51H	38,001.60	45,604.00	53,206.40	18.27	21.93	25.58
SANITATION ASSOCIATE II - 5430	10605	5100	N	A51H	38,001.60	45,604.00	53,206.40	18.27	21.93	25.58
SANITATION ASSOCIATE II - 5430	10606	5100	N	A51H	38,001.60	45,604.00	53,206.40	18.27	21.93	25.58
SANITATION ASSOCIATE II - 5430	10607	5100	N	A51H	38,001.60	45,604.00	53,206.40	18.27	21.93	25.58
SANITATION ASSOCIATE II - 5430	10608	5100	N	A51H	38,001.60	45,604.00	53,206.40	18.27	21.93	25.58
SANITATION ASSOCIATE II - 5430	10609	5100	N	A51H	38,001.60	45,604.00	53,206.40	18.27	21.93	25.58
SANITATION ASSOCIATE II - 5431	10615	5100	N	A51H	38,001.60	45,604.00	53,206.40	18.27	21.93	25.58
SANITATION ASSOCIATE III - 5430	10603	5100	N	A52H	41,787.20	50,148.80	58,510.40	20.09	24.11	28.13
SANITATION ASSOCIATE III - 5431	10613	5100	N	A52H	41,787.20	50,148.80	58,510.40	20.09	24.11	28.13

45

City of Dunedin
FY 24 Pay Plan
Positions in Alphabetical Order

Position Desc	Position #	Job Class	Exempt/Non	Grade	Annual Salary Range			Hourly Range		
					Min Pay	Mid Pay	Max Pay	Hrly Min	Hrly Mid	Hrly Max
SANITATION ASSOCIATE III - 5431	10614	5100	N	A52H	41,787.20	50,148.80	58,510.40	20.09	24.11	28.13
SANITATION FOREMAN	10600	4510	N	A55H	55,619.20	66,747.20	77,875.20	26.74	32.09	37.44
SANITATION MANAGER	10599	4500	E	A56E	61,193.60	73,434.40	85,675.20	29.42	35.31	41.19
SENIOR LIFEGUARD (PT 50 HR)	10656	5200	N	P49H	19,500.00	22,425.00	25,350.00	15.00	17.25	19.50
SPECIAL EVENTS COORDINATOR	10164	5000	E	A58E	74,027.20	88,836.80	103,646.40	35.59	42.71	49.83
SPECIAL EVENTS PROGRAMMER	10570	5100	N	A52H	41,787.20	50,148.80	58,510.40	20.09	24.11	28.13
SPECIAL PROJECT COORDINATOR	10496	5100	N	A54H	50,564.80	60,673.60	70,782.40	24.31	29.17	34.03
SPRAY TECHNICIAN	10192	5100	N	A51H	38,001.60	45,604.00	53,206.40	18.27	21.93	25.58
SR ACCOUNTANT	10026	4500	E	A55E	55,619.20	66,747.20	77,875.20	26.74	32.09	37.44
SR ADMINISTRATIVE ASSISTANT - CITY CLERK	10008	5100	N	A51H	38,001.60	45,604.00	53,206.40	18.27	21.93	25.58
SR ADMINISTRATIVE ASSISTANT - CITY MANAGER	10004	5100	N	A51H	38,001.60	45,604.00	53,206.40	18.27	21.93	25.58
SR ADMINISTRATIVE ASSISTANT - LIBRARY	10538	5100	N	A51H	38,001.60	45,604.00	53,206.40	18.27	21.93	25.58
SR ADMINISTRATIVE ASSISTANT - PARKS	10575	5100	N	A51H	38,001.60	45,604.00	53,206.40	18.27	21.93	25.58
SR ADMINISTRATIVE ASSISTANT - RECREATION ADMIN	10159	5100	N	A51H	38,001.60	45,604.00	53,206.40	18.27	21.93	25.58
SR ADMINISTRATIVE ASSISTANT - SOLID WASTE	10318	5100	N	A51H	38,001.60	45,604.00	53,206.40	18.27	21.93	25.58
SR ADMINISTRATIVE ASSISTANT - WATER	10460	5100	N	A51H	38,001.60	45,604.00	53,206.40	18.27	21.93	25.58
SR BUILDING INSPECTOR	10550	5100	N	A56H	61,193.60	73,434.40	85,675.20	29.42	35.31	41.19
SR BUILDING INSPECTOR	10551	5100	N	A56H	61,193.60	73,434.40	85,675.20	29.42	35.31	41.19
SR COMMUNICATIONS SPECIALIST	10549	5000	E	A56E	61,193.60	73,434.40	85,675.20	29.42	35.31	41.19
SR COMPENSATION & BENEFITS COORDINATOR	10547	5000	E	A57E	67,308.80	80,766.40	94,224.00	32.36	38.83	45.30
SR ENGINEERING DESIGNER	10227	5000	E	A54E	50,564.80	60,673.60	70,782.40	24.31	29.17	34.03
SR LIBRARY ASSISTANT	10144	5100	N	A50H	36,046.40	41,454.40	46,862.40	17.33	19.93	22.53
SR LIBRARY ASSISTANT	10145	5100	N	A50H	36,046.40	41,454.40	46,862.40	17.33	19.93	22.53
SR LIBRARY ASSISTANT	10467	5100	N	A50H	36,046.40	41,454.40	46,862.40	17.33	19.93	22.53
SR LIBRARY ASSISTANT	10517	5100	N	A50H	36,046.40	41,454.40	46,862.40	17.33	19.93	22.53
SR LIBRARY ASSISTANT	10566	5100	N	A50H	36,046.40	41,454.40	46,862.40	17.33	19.93	22.53
SR LIBRARY ASSISTANT	10567	5100	N	A50H	36,046.40	41,454.40	46,862.40	17.33	19.93	22.53
SR LIBRARY ASSISTANT	10568	5100	N	A50H	36,046.40	41,454.40	46,862.40	17.33	19.93	22.53
SR WATER DISTRIBUTION TECH	10251	5100	N	A54H	50,564.80	60,673.60	70,782.40	24.31	29.17	34.03
SR WATER DISTRIBUTION TECH	10253	5100	N	A54H	50,564.80	60,673.60	70,782.40	24.31	29.17	34.03
SR WATER SERVICE WORKER	10442	5100	N	A50H	36,046.40	41,454.40	46,862.40	17.33	19.93	22.53
SR WW COLLECTION TECH	10447	5100	N	A54H	50,564.80	60,673.60	70,782.40	24.31	29.17	34.03
SR WW SERVICE WORKER	10292	5100	N	A50H	36,046.40	41,454.40	46,862.40	17.33	19.93	22.53
SR WW SERVICE WORKER	10449	5100	N	A50H	36,046.40	41,454.40	46,862.40	17.33	19.93	22.53
SR WW SERVICE WORKER	10450	5100	N	A50H	36,046.40	41,454.40	46,862.40	17.33	19.93	22.53
STRATEGY & SUSTAINABILITY MANAGER	10545	4000	E	A58E	74,027.20	88,836.80	103,646.40	35.59	42.71	49.83
SUSTAINABILITY PROGRAM MANAGER	10520	4500	E	A54E	50,564.80	60,673.60	70,782.40	24.31	29.17	34.03
TECHNICAL SUPPORT COORDINATOR - WW	10583	5100	N	A52H	41,787.20	50,148.80	58,510.40	20.09	24.11	28.13
TV & SEAL TRUCK OPERATOR	10279	5100	N	A54H	50,564.80	60,673.60	70,782.40	24.31	29.17	34.03
UTILITY BILLING SUPERVISOR	10017	4500	E	A56E	61,193.60	73,434.40	85,675.20	29.42	35.31	41.19
UTILITY BILLING TECHNICIAN	10018	5100	N	A50H	36,046.40	41,454.40	46,862.40	17.33	19.93	22.53
UTILITY BILLING TECHNICIAN	10019	5100	N	A50H	36,046.40	41,454.40	46,862.40	17.33	19.93	22.53
UTILITY BILLING TECHNICIAN	10020	5100	N	A50H	36,046.40	41,454.40	46,862.40	17.33	19.93	22.53
UTILITY BILLING TECHNICIAN	10021	5100	N	A50H	36,046.40	41,454.40	46,862.40	17.33	19.93	22.53
UTILITY BILLING TECHNICIAN	10022	5100	N	A50H	36,046.40	41,454.40	46,862.40	17.33	19.93	22.53
UTILITY DATA CONTROL COORDINATOR	10235	5100	N	A52H	41,787.20	50,148.80	58,510.40	20.09	24.11	28.13
WATER DISTRIBUTION FOREMAN	10250	4510	N	A55H	55,619.20	66,747.20	77,875.20	26.74	32.09	37.44
WATER DISTRIBUTION FOREMAN	10657	4510	N	A55H	55,619.20	66,747.20	77,875.20	26.74	32.09	37.44
WATER DISTRIBUTION MANAGER	10577	4000	E	A57E	67,308.80	80,766.40	94,224.00	32.36	38.83	45.30
WATER DISTRIBUTION TECH	10254	5100	N	A52H	41,787.20	50,148.80	58,510.40	20.09	24.11	28.13
WATER DISTRIBUTION TECH	10259	5100	N	A52H	41,787.20	50,148.80	58,510.40	20.09	24.11	28.13
WATER MAINT MECHANIC	10248	6300	N	A53H	45,968.00	55,161.60	64,355.20	22.10	26.52	30.94
WATER MAINT MECHANIC	10653	6300	N	A53H	45,968.00	55,161.60	64,355.20	22.10	26.52	30.94

9/6

City of Dunedin
FY 24 Pay Plan
Positions in Alphabetical Order

Position Desc	Position #	Job Class	Exempt/Non	Grade	Annual Salary Range			Hourly Range		
					Min Pay	Mid Pay	Max Pay	Hrly Min	Hrly Mid	Hrly Max
WATER PLANT MANAGER	10576	4000	E	A58E	74,027.20	88,836.80	103,646.40	35.59	42.71	49.83
WATER PLANT OPERATOR	10241	6100	N	A53H	45,968.00	55,161.60	64,355.20	22.10	26.52	30.94
WATER PLANT OPERATOR	10242	6100	N	A53H	45,968.00	55,161.60	64,355.20	22.10	26.52	30.94
WATER PLANT OPERATOR	10243	6100	N	A53H	45,968.00	55,161.60	64,355.20	22.10	26.52	30.94
WATER PLANT OPERATOR	10244	6100	N	A53H	45,968.00	55,161.60	64,355.20	22.10	26.52	30.94
WATER PLANT OPERATOR	10245	6100	N	A53H	45,968.00	55,161.60	64,355.20	22.10	26.52	30.94
WATER PLANT OPERATOR	10246	6100	N	A53H	45,968.00	55,161.60	64,355.20	22.10	26.52	30.94
WATER PLANT OPERATOR	10247	6100	N	A53H	45,968.00	55,161.60	64,355.20	22.10	26.52	30.94
WATER PLANT OPERATOR TRAINEE	10541	6200	N	A51H	38,001.60	45,604.00	53,206.40	18.27	21.93	25.58
WATER SERVICE WORKER	10260	5100	N	A49H	33,529.60	38,563.20	43,596.80	16.12	18.54	20.96
WATER SERVICE WORKER	10261	5100	N	A49H	33,529.60	38,563.20	43,596.80	16.12	18.54	20.96
WATER SERVICE WORKER	10262	5100	N	A49H	33,529.60	38,563.20	43,596.80	16.12	18.54	20.96
WATER SERVICE WORKER	10533	5100	N	A49H	33,529.60	38,563.20	43,596.80	16.12	18.54	20.96
WATER SERVICE WORKER	10534	5100	N	A49H	33,529.60	38,563.20	43,596.80	16.12	18.54	20.96
WATER SERVICE WORKER	10535	5100	N	A49H	33,529.60	38,563.20	43,596.80	16.12	18.54	20.96
WEBSITE/DIGITAL COORDINATOR	10514	5000	E	A54E	50,564.80	60,673.60	70,782.40	24.31	29.17	34.03
WW COLLECTION FOREMAN	10286	4510	N	A55H	55,619.20	66,747.20	77,875.20	26.74	32.09	37.44
WW COLLECTION MANAGER	10580	4000	E	A57E	67,308.80	80,766.40	94,224.00	32.36	38.83	45.30
WW COLLECTION TECHNICIAN	10290	5100	N	A52H	41,787.20	50,148.80	58,510.40	20.09	24.11	28.13
WW COLLECTION TECHNICIAN	10448	5100	N	A52H	41,787.20	50,148.80	58,510.40	20.09	24.11	28.13
WW MAINT MECHANIC	10280	5100	N	A53H	45,968.00	55,161.60	64,355.20	22.10	26.52	30.94
WW MAINT MECHANIC	10281	5100	N	A53H	45,968.00	55,161.60	64,355.20	22.10	26.52	30.94
WW MAINT MECHANIC	10282	5100	N	A53H	45,968.00	55,161.60	64,355.20	22.10	26.52	30.94
WW MAINT MECHANIC	10283	5100	N	A53H	45,968.00	55,161.60	64,355.20	22.10	26.52	30.94
WW MAINT MECHANIC	10284	5100	N	A53H	45,968.00	55,161.60	64,355.20	22.10	26.52	30.94
WW MAINT MECHANIC	10481	5100	N	A53H	45,968.00	55,161.60	64,355.20	22.10	26.52	30.94
WW PLANT MANAGER	10579	4000	E	A58E	74,027.20	88,836.80	103,646.40	35.59	42.71	49.83
WW PLANT OPERATOR	10270	5100	N	A53H	45,968.00	55,161.60	64,355.20	22.10	26.52	30.94
WW PLANT OPERATOR	10271	5100	N	A53H	45,968.00	55,161.60	64,355.20	22.10	26.52	30.94
WW PLANT OPERATOR	10273	5100	N	A53H	45,968.00	55,161.60	64,355.20	22.10	26.52	30.94
WW PLANT OPERATOR	10274	5100	N	A53H	45,968.00	55,161.60	64,355.20	22.10	26.52	30.94
WW PLANT OPERATOR	10276	5100	N	A53H	45,968.00	55,161.60	64,355.20	22.10	26.52	30.94
WW PLANT OPERATOR	10277	5100	N	A53H	45,968.00	55,161.60	64,355.20	22.10	26.52	30.94
WW PLANT OPERATOR	10445	5100	N	A53H	45,968.00	55,161.60	64,355.20	22.10	26.52	30.94
WW PLANT OPERATOR	10446	5100	N	A53H	45,968.00	55,161.60	64,355.20	22.10	26.52	30.94
WW PLANT OPERATOR TRAINEE	10269	5100	N	A51H	38,001.60	45,604.00	53,206.40	18.27	21.93	25.58
WW PLANT OPERATOR TRAINEE	10529	5100	N	A51H	38,001.60	45,604.00	53,206.40	18.27	21.93	25.58
WW SERVICE WORKER	10293	5100	N	A49H	33,529.60	38,563.20	43,596.80	16.12	18.54	20.96
WW SERVICE WORKER	10294	5100	N	A49H	33,529.60	38,563.20	43,596.80	16.12	18.54	20.96
WW SERVICE WORKER	10295	5100	N	A49H	33,529.60	38,563.20	43,596.80	16.12	18.54	20.96
WW SERVICE WORKER	10296	5100	N	A49H	33,529.60	38,563.20	43,596.80	16.12	18.54	20.96

* Annual Salary based on 2912 hours

47

FULL-TIME EQUIVALENT (FTE) POSITIONS BY DEPARTMENT

DEPARTMENT	FINAL BUDGET FY 2021	FINAL BUDGET FY 2022	ESTIMATED BUDGET FY 2023	ADOPTED BUDGET FY 2024	FTE CHG
City Commission	2.50	2.50	2.50	2.50	-
CITY COMMISSION DEPARTMENT TOTAL	2.50	2.50	2.50	2.50	-
City Attorney	-	-	-	-	-
CITY ATTORNEY DEPARTMENT TOTAL	-	-	-	-	-
City Clerk	5.00	5.00	4.00	4.00	-
CITY CLERK DEPARTMENT TOTAL	5.00	5.00	4.00	4.00	-
City Manager	5.00	4.85	4.85	5.85	1.00
CITY MANAGER DEPARTMENT TOTAL	5.00	4.85	4.85	5.85	1.00
Communications	4.00	4.00	4.25	4.25	-
COMMUNICATIONS DEPARTMENT TOTAL	4.00	4.00	4.25	4.25	-
Economic Housing & Development	1.54	2.25	2.25	2.25	-
CRA	2.19	1.75	1.75	1.75	-
ECO. & HSG. DEVELOPMENT DEPT. TOTAL	3.73	4.00	4.00	4.00	-
Finance/Accounting	10.00	10.00	10.20	11.20	1.00
FINANCE DEPARTMENT TOTAL	10.00	10.00	10.20	11.20	1.00
Fire Admin	10.00	10.00	10.00	10.00	-
Fire Ops	36.00	36.00	36.00	36.00	-
EMS	10.00	10.00	13.00	13.00	-
FIRE DEPARTMENT TOTAL	56.00	56.00	59.00	59.00	-
Human Resources	2.08	2.08	2.83	2.83	-
Risk Management	2.47	2.37	2.37	2.37	-
Health/Benefits	1.25	1.25	1.25	1.25	-
HR & RISK MGMT DEPARTMENT TOTAL	5.80	5.70	6.45	6.45	-
Law Enforcement	-	-	-	-	-
LAW ENFORCEMENT DEPARTMENT TOTAL	-	-	-	-	-
IT Services	6.00	7.00	7.00	7.00	-
IT SERVICES DEPARTMENT TOTAL	6.00	7.00	7.00	7.00	-
Library	25.20	25.70	25.70	27.20	1.50
LIBRARY DEPARTMENT TOTAL	25.20	25.70	25.70	27.20	1.50
Parks & Rec Admin	5.85	6.00	6.00	6.00	-
Parks Maintenance	32.80	32.80	32.80	33.80	1.00
Recreation	42.83	42.83	43.03	44.03	1.00
Golf Operations	-	-	9.10	9.10	-
Marina	2.55	2.55	2.55	2.55	-
Stadium	-	-	-	-	-
PARKS & RECREATION DEPT. TOTAL	84.03	84.18	93.48	95.48	2.00
Community Development	6.95	7.65	7.65	7.65	-
Building Services	10.55	10.65	10.65	10.65	-
COMMUNITY DEVELOPMENT. DEPT. TOTAL	17.50	18.30	18.30	18.30	-

FULL-TIME EQUIVALENT (FTE) POSITIONS BY DEPARTMENT CONTINUED

DEPARTMENT	FINAL BUDGET FY 2021	FINAL BUDGET FY 2022	ESTIMATED BUDGET FY 2023	ADOPTED BUDGET FY 2024	FTE CHG
Stormwater	14.66	15.36	15.56	17.43	1.87
Sanitation and Recycling - Administration	6.00	6.00	6.40	6.80	0.40
Sanitation and Recycling - Residential	10.00	10.00	10.00	10.00	-
Sanitation and Recycling - Commercial	5.00	5.00	5.00	5.00	-
Fleet	9.00	9.00	9.20	9.40	0.20
Streets	10.36	9.66	9.76	9.53	(0.23)
Facilities Maintenance	11.68	11.68	11.78	13.54	1.76
PUBLIC WORKS DEPARTMENT TOTAL	66.70	66.70	67.70	71.70	4.00
Engineering	13.50	13.14	12.14	12.14	-
Utility Billing	6.34	6.00	6.00	6.00	-
Water- Administration	3.33	3.33	3.33	3.33	-
Water- Production	12.00	12.00	12.00	13.00	1.00
Water- Distribution & Reclaimed	15.63	15.63	15.63	15.63	-
Wastewater- Administration	1.33	1.33	1.33	1.33	-
Wastewater- Treatment	18.00	18.00	18.00	18.00	-
Wastewater- Collection	16.00	16.63	16.63	16.63	-
UTILITIES & ENGINEERING DEPARTMENT TOTAL	86.13	86.06	85.06	86.06	1.00
TOTAL CITYWIDE FTE	377.59	379.99	392.49	402.99	10.50

FULL-TIME EQUIVALENT (FTE) POSITIONS BY TYPE

TYPE	FINAL BUDGET FY 2021	FINAL BUDGET FY 2022	ESTIMATED BUDGET FY 2023	ADOPTED BUDGET FY 2024	FTE CHG
CITYWIDE REGULAR FTE	359.23	361.00	372.00	382.50	10.50
CITYWIDE VARIABLE/ON-DEMAND FTE	18.36	18.99	20.49	20.49	-
TOTAL CITYWIDE FTE	377.59	379.99	392.49	402.99	10.50

FULL-TIME EQUIVALENT (FTE) POSITIONS BY FUND

FUND	FINAL BUDGET FY 2021	FINAL BUDGET FY 2022	ESTIMATED BUDGET FY 2023	ADOPTED BUDGET FY 2024	FTE CHG
General Fund	210.11	211.32	214.82	220.09	5.27
Building Fund	10.55	10.65	10.65	10.65	-
CRA Fund	2.19	1.75	1.75	1.75	-
Solid Waste Fund	21.00	21.00	21.40	21.80	0.40
Water/Wastewater Fund	86.13	86.06	85.06	86.06	1.00
Stormwater Fund	14.66	15.36	15.56	17.43	1.87
Marina Fund	2.55	2.55	2.55	2.55	-
Golf Operations Fund	-	-	9.10	9.10	-
Fleet Fund	9.00	9.00	9.20	9.40	0.20
Facilities Maintenance Fund	11.68	11.68	11.78	13.54	1.76
Risk Safety Fund	2.47	2.37	2.37	2.37	-
Health Benefits Fund	1.25	1.25	1.25	1.25	-
IT Services Fund	6.00	7.00	7.00	7.00	-
Parking Fund	-	-	-	-	-
TOTAL CITYWIDE FTE	377.59	379.99	392.49	402.99	10.50

PERSONNEL CHANGES BY POSITION

POSITION	DEPARTMENT	ESTIMATED BUDGET FY 2023	ADOPTED BUDGET FY 2024	FTE IMPACT	FISCAL IMPACT	FUND	COMMENTS
Strategy & Sustainability Manager	City Manager	1.00	1.00	0.00	\$ 6,372	General	Position Reclass Pay grade change
Buyer	Finance	0.00	1.00	1.00	\$ 66,854	General	New Positon
Deputy Fire Marshal	Fire	1.00	1.00	0.00	\$ 10,661	General	Position Reclass Pay grade change
Senior Administrative Assistant	Library	0.00	1.00	1.00	\$ -	General	Employee Transfer for New Position
Library Assistant	Library	0.00	0.50	0.50	\$ -	General	Increased VOD staff
Senior Administrative Assistant	Parks & Recreation	1.00	1.00	0.00	\$ 3,051	General	Position Reclass Pay grade change
Horticultural Technician	Parks & Recreation	0.00	1.00	1.00	\$ 54,025	General	New Positon
Youth Services Recreation Coordinator	Parks & Recreation	0.00	1.00	1.00	\$ 86,319	General	New Positon
Craftworker II	Public Works	0.00	1.00	1.00	\$ 54,025	Facilities	New Positon
Lead Craftworker (HVAC)	Public Works	0.00	1.00	1.00	\$ 69,154	Facilities	New Positon
Environmental Specialist I	Public Works	0.00	1.00	1.00	\$ 61,538	Solid Waste	New Positon approved as Sanitation and Reycling Program Specialist
Business Analyst	Public Works	0.00	1.00	1.00	\$ 66,854	Stormwater	New Positon
Environmental Specialist I	Public Works	0.00	1.00	1.00	\$ 61,538	Stormwater	New Positon
Assistant Public Works Director	Streets	0.33	0.10	-0.23			The Division Director of Public Services position was reclassified to the Assistant Director of Public Works position.
	Stormwater	0.33	0.20	-0.13			
	Facilities	0.34	0.10	-0.24			The Assistant Director of Public Works was reclassified across all Public Works Divisions
	Solid Waste	0.00	0.40	0.40			
	Fleet	0.00	0.20	0.20			
Fleet Foreman	Fleet	1.00	1.00	0.00	\$ 5,850	General	Position Reclass Pay grade change
Water Maintenance Mechanic	Utilities	0.00	1.00	1.00	\$ 63,638	Water/WW	New Positon
CITYWIDE FTE & FISCAL IMPACT		5.00	15.50	10.50	\$ 609,879		

IMPACT OF PERSONNEL CHANGES BY FUND					
FUND	ESTIMATED BUDGET FY 2023	ADOPTED BUDGET FY 2024	FTE IMPACT	FISCAL IMPACT	COMMENTS
General Fund	214.82	220.09	5.27	\$ 233,132	
Building Fund	10.65	10.65	0.00	-	
CRA Fund	1.75	1.75	0.00	-	
Solid Waste Fund	21.40	21.80	0.40	61,538	
Water/Wastewater Fund	85.06	86.06	1.00	63,638	
Stormwater Fund	15.56	17.43	1.87	128,392	
Marina Fund	2.55	2.55	0.00	-	
Golf Operations Fund	9.10	9.10	0.00	-	
Fleet Fund	9.20	9.40	0.20	-	
Facilities Maintenance Fund	11.78	13.54	1.76	123,179	
Risk Safety Fund	2.37	2.37	0.00	-	
Health Benefits Fund	1.25	1.25	0.00	-	
IT Services Fund	7.00	7.00	0.00	-	
CITYWIDE FTE & FISCAL IMPACT	392.49	402.99	10.50	\$ 609,879	

Details on the FY 2024 Personnel Requests and updates on prior year requests can be found in Appendix C of this document.